



# Does Enforcement Change User Behaviour? (UK)

*Darren Furness – Network Rail*

*Tom Naughton – British Transport Police*



# Our level crossings



6300



1400

# *The problem – the deliberate violation of red lights*

Understanding meaning

Conspicuity

Deliberate violation





# Education Engineering Enabling Elimination Enforcement



Stay safe  
**TOP 3**

- 1 Stay clear of the tracks. Is it worth putting your life on the line?
- 2 Use the level crossing shortcuts across the railway can kill.
- 3 Know the signs: be alert to railway signs, they could save your life.

Now you know  
**THE FACTS**

**STAY SAFE!**

For further information visit  
[www.rail-life.co.uk](http://www.rail-life.co.uk)  
or contact  
[raillife@networkrail.co.uk](mailto:raillife@networkrail.co.uk)

BRITISH TRANSPORT POLICE Freephone 0800 40 50 40

Network Rail

**ARE YOU OK?**

**RAIL LIFE**  
It's your journey  
[www.rail-life.co.uk](http://www.rail-life.co.uk)

Know  
**THE FACTS**

There are about  
**3 million**  
passenger journeys every day  
on trains travelling up to  
**125 mph**  
running on electricity  
**100 times**  
more powerful than the electricity in your home.

You can come to serious harm if you end up in the wrong place at the wrong time on the railway.

**Stay safe.  
KNOW THE FACTS**

**RAIL LIFE** Network Rail

Help keep them off the rails

**NEW TEACHING TOOLS FROM NETWORK RAIL**

[www.networkrail.co.uk/safety-education](http://www.networkrail.co.uk/safety-education)

# Enforcement

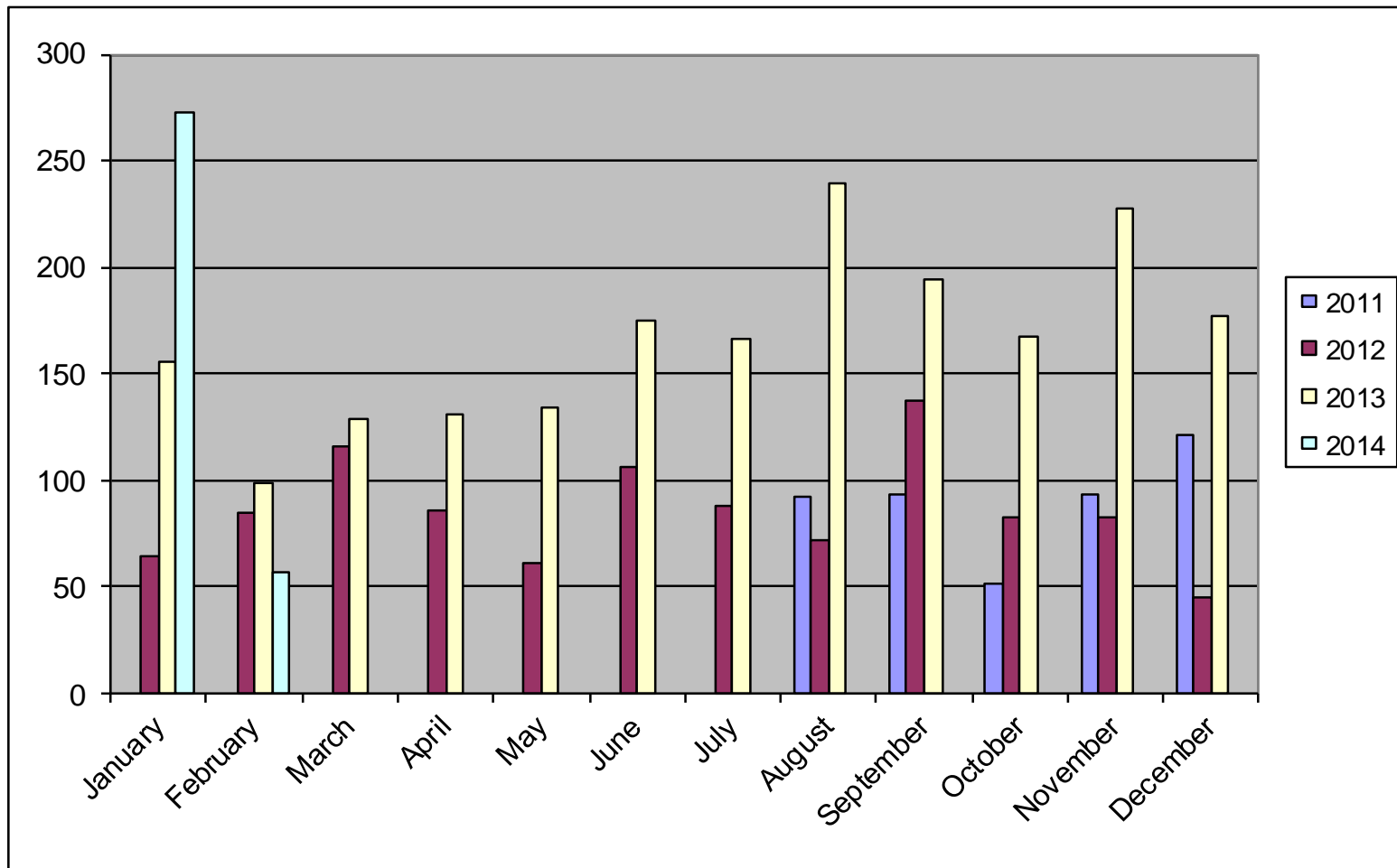
Cameras for:  
Speed  
red light junctions  
public bus lanes



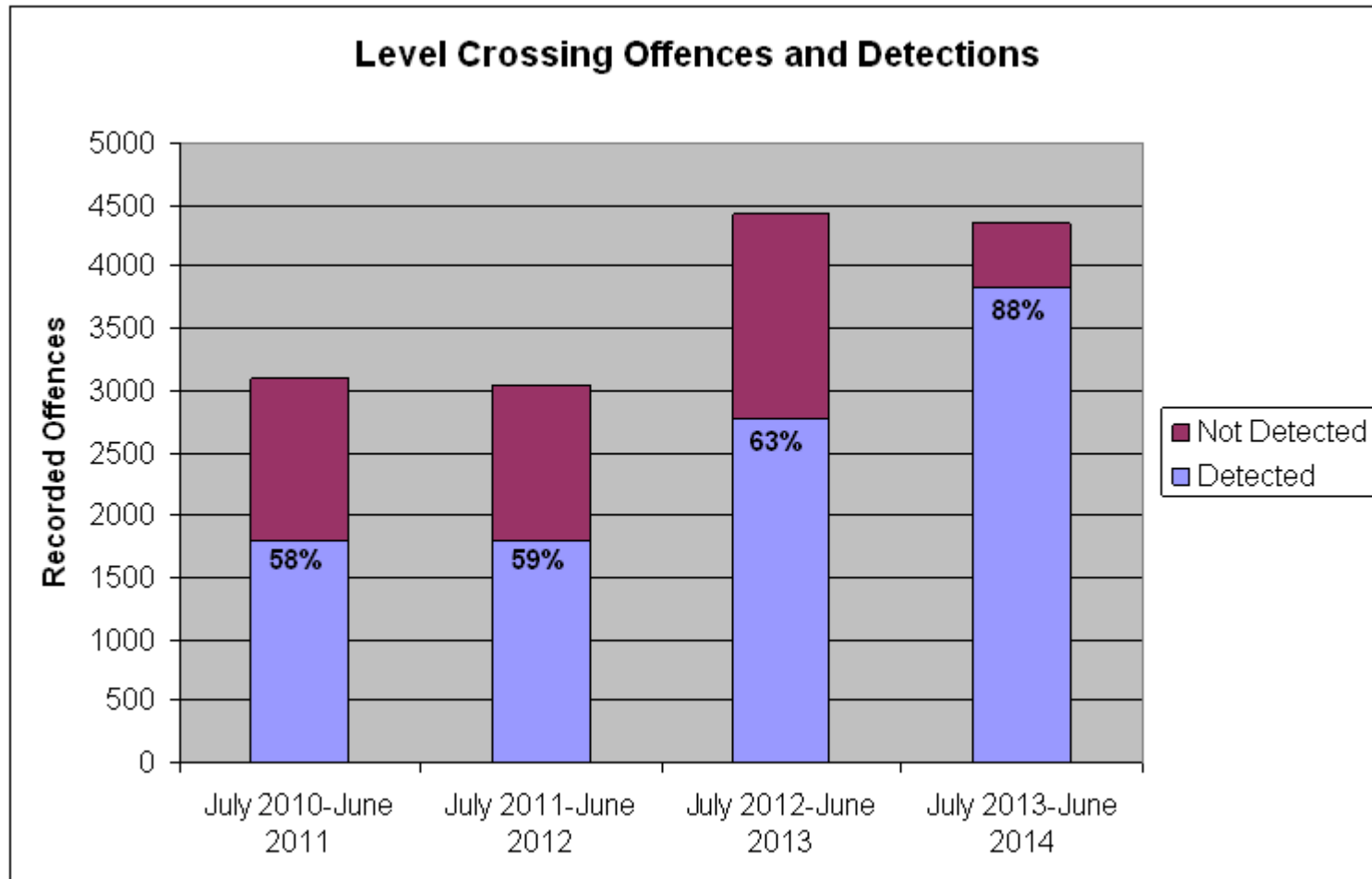


# *10 minute FILM*

# Driver retraining courses



# Level crossing offences and detections









**Darren Furness**  
**Head of level crossings**  
**Darren.Furness1@networkrail.co.uk**

**Tom Naughton**  
**Chief Inspector British Transport Police**  
**Thomas.Naughton2@btp.pnn.police.uk**

