

Private Crossings in Illinois



Lemont, Illinois McGuire Parkway June 21, 2006

Steve Laffey, Railroad Safety Specialist
Illinois Commerce Commission
August 5, 2014
slaffey@icc.illinois.gov

Crossing Counts

Private Category	Private W/D @ 1975				
	None	Signals	Signs	Total	%
Farm	4,889	20	497	5,406	66.3%
Industrial	1,340	79	449	1,868	22.9%
N/A	37	0	0	37	0.5%
Recreational	60	8	61	129	1.6%
Residential	491	27	198	716	8.8%
Total	6,817	134	1,205	8,156	100.0%
83.6% Without a Sign or Device					

Private Category	Private W/D @ 2013				
	None	Signals	Signs	Total	%
Farm	1,959	11	392	2,362	61.1%
Industrial	626	55	355	1,036	26.8%
N/A	40	0	0	40	1.0%
Recreational	18	6	47	71	1.8%
Residential	198	17	143	358	9.3%
Total	2,841	89	937	3,867	100.0%
73.5% Without a Sign or Device					

Private Category	1975	2013	% Change
Farm	5,406	2,362	-56.3%
Industrial	1,868	1,036	-44.5%
N/A	37	40	8.1%
Recreational	129	71	-45.0%
Residential	716	358	-50.0%
Total	8,156	3,867	-52.6%

52.6 % Fewer Private Crossings Now than in 1975

Collision Counts

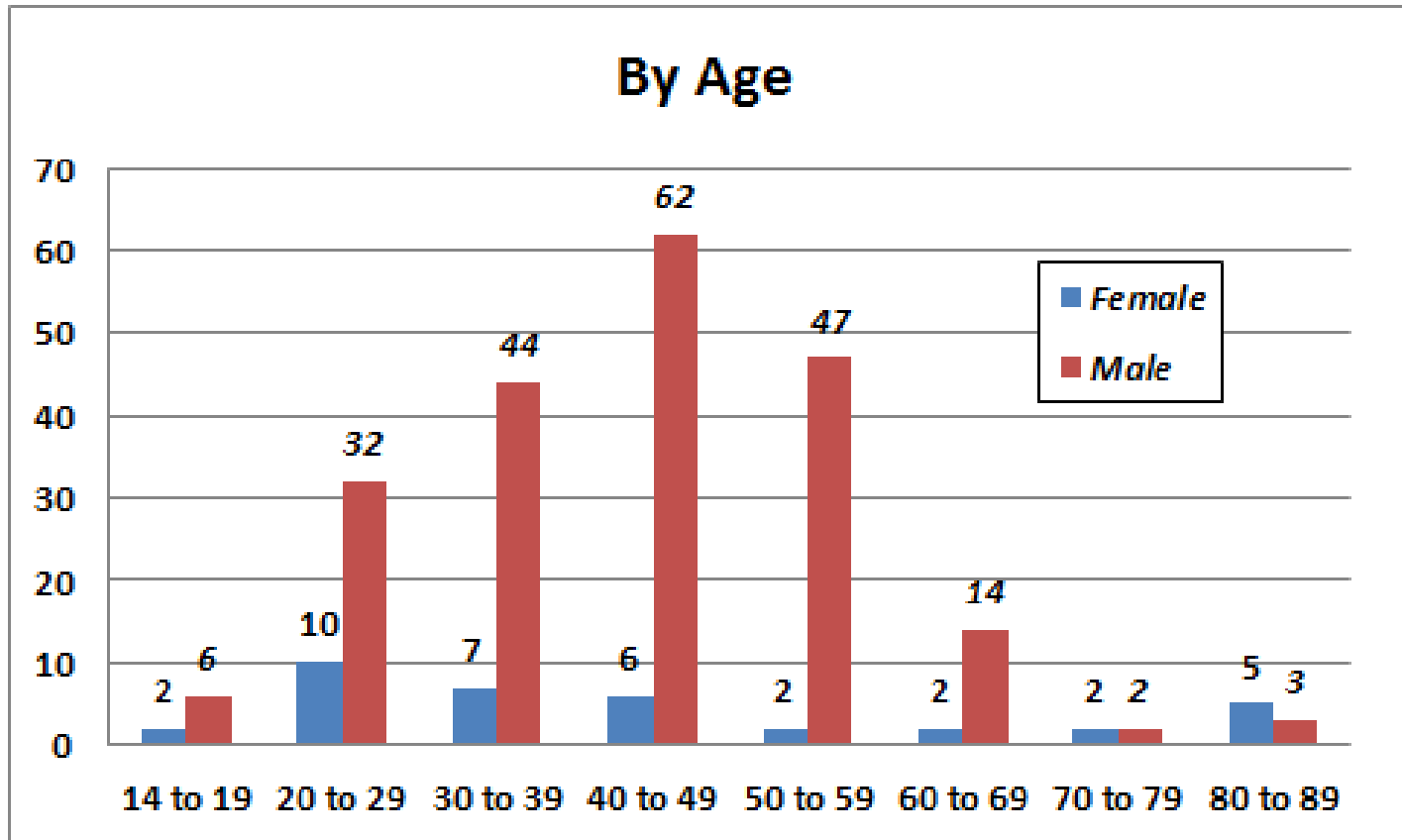
Year	Total	Killed	Injured
1990	24	1	8
1991	19	4	3
1992	37	1	16
1993	22	1	7
1994	40	5	7
1995	28	1	9
1996	19	1	6
1997	25	1	6
1998	22	0	3
1999	20	3	5
2000	22	1	6
2001	26	2	6
2002	15	1	2
2003	18	0	6
2004	16	1	5
2005	34	3	8
2006	22	2	7
2007	27	0	12
2008	20	1	3
2009	21	1	4
2010	10	0	6
2011	14	0	6
2012	16	0	1
2013	23	2	4
Total	540	32	146
Average	22.5	1.3	6.1

Private Category	Total	%	Killed	%	Injured	%
Farm	84	17.3%	10	33.3%	27	20.0%
Industrial	157	32.4%	9	30.0%	50	37.0%
Recreational	12	2.5%	1	3.3%	1	0.7%
Residential	56	11.5%	8	26.7%	15	11.1%
RR Yard	176	36.3%	2	6.7%	42	31.1%
Total	485	100.0%	30	100.0%	135	100.0%

Number of collisions is essentially unchanged between 1990 and 2013 compared to a 69% reduction at public level crossings; and a 52.6 % Reduction in number of private crossings.

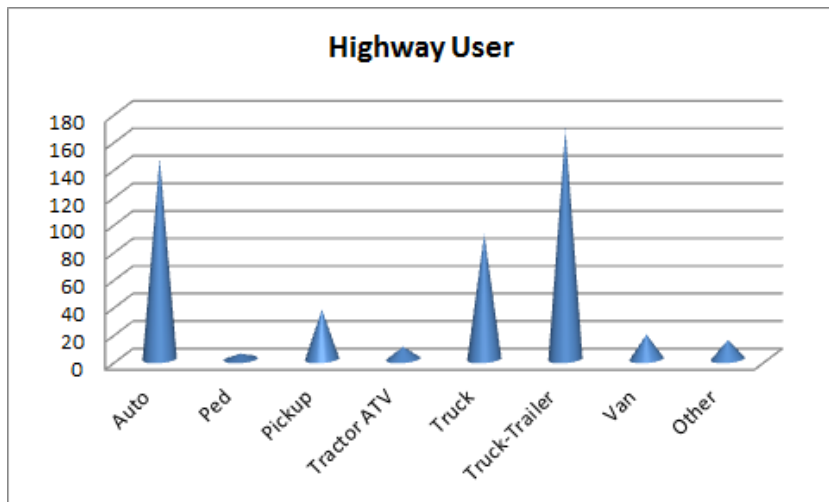
Why No Change?

Collisions - Age & Gender

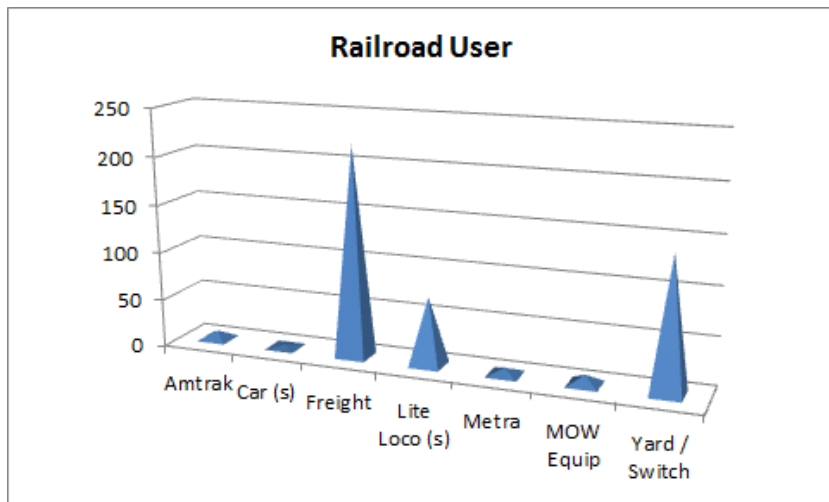


***87% of Private Level Crossing Collisions Involve MEN,
Compared to 75% of Collisions at Public Level Crossings.***

Collisions - Type of Vehicle



30.1% Auto & 66.2% Trucks

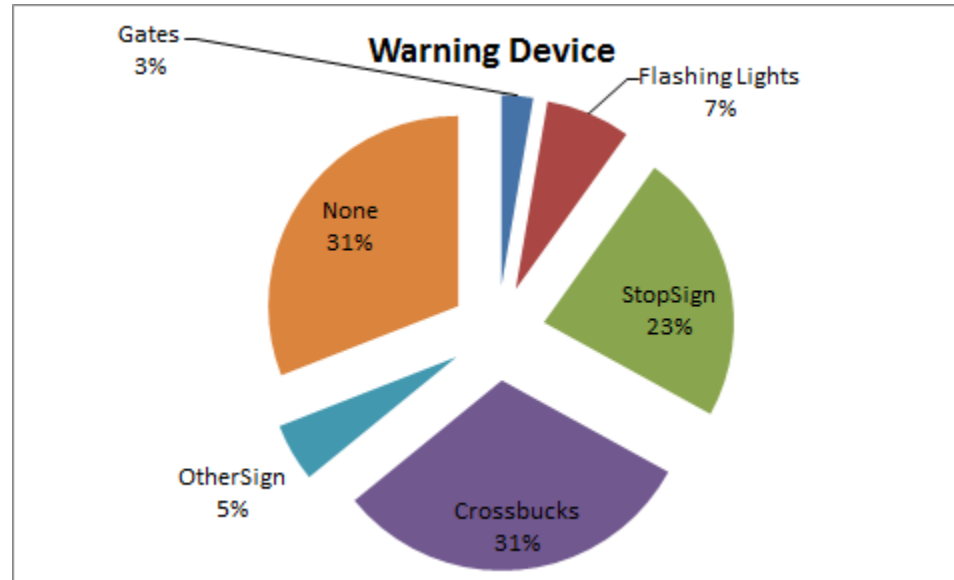


47.8% Freight & 30.3% Yard/Switch

Reporting Railroad	Total	%	Killed	%
Amtrak	17	4%	8	27%
BNSF	85	18%	6	20%
CN (CC,EJE,GTW,IC,WC)	55	11%	1	3%
CP(DME,SOO)	34	7%	0	0%
CSX	22	5%	2	7%
KCS (GWWE)	2	0%	1	3%
NIRC (HC,MILW,RI,SWS)	9	2%	3	10%
NS	100	21%	4	13%
UP	111	23%	3	10%
Sub-Total	435	88%	28	93%
Other Railroads	50	10%	2	7%
Total	485	100%	30	100%

NS 21% of Collisions & 12% of Rail in Illinois (Rail Yards)

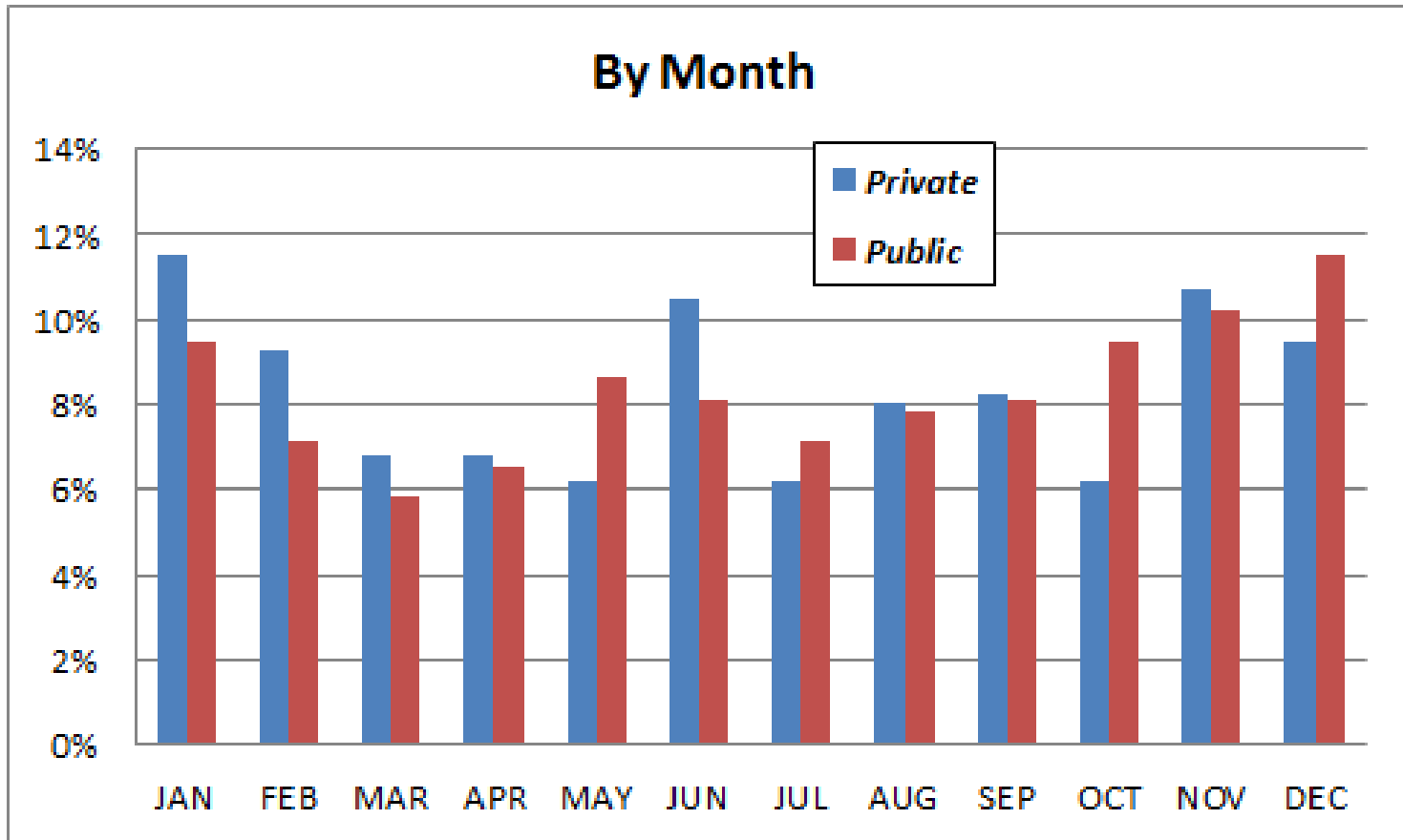
Collisions - Warning Signs & Devices



At Private Crossings - 90% of Collisions Occur at Crossings with Passive Warning Signs and only 10% at Crossings Equipped with Train Activated Warning Devices.

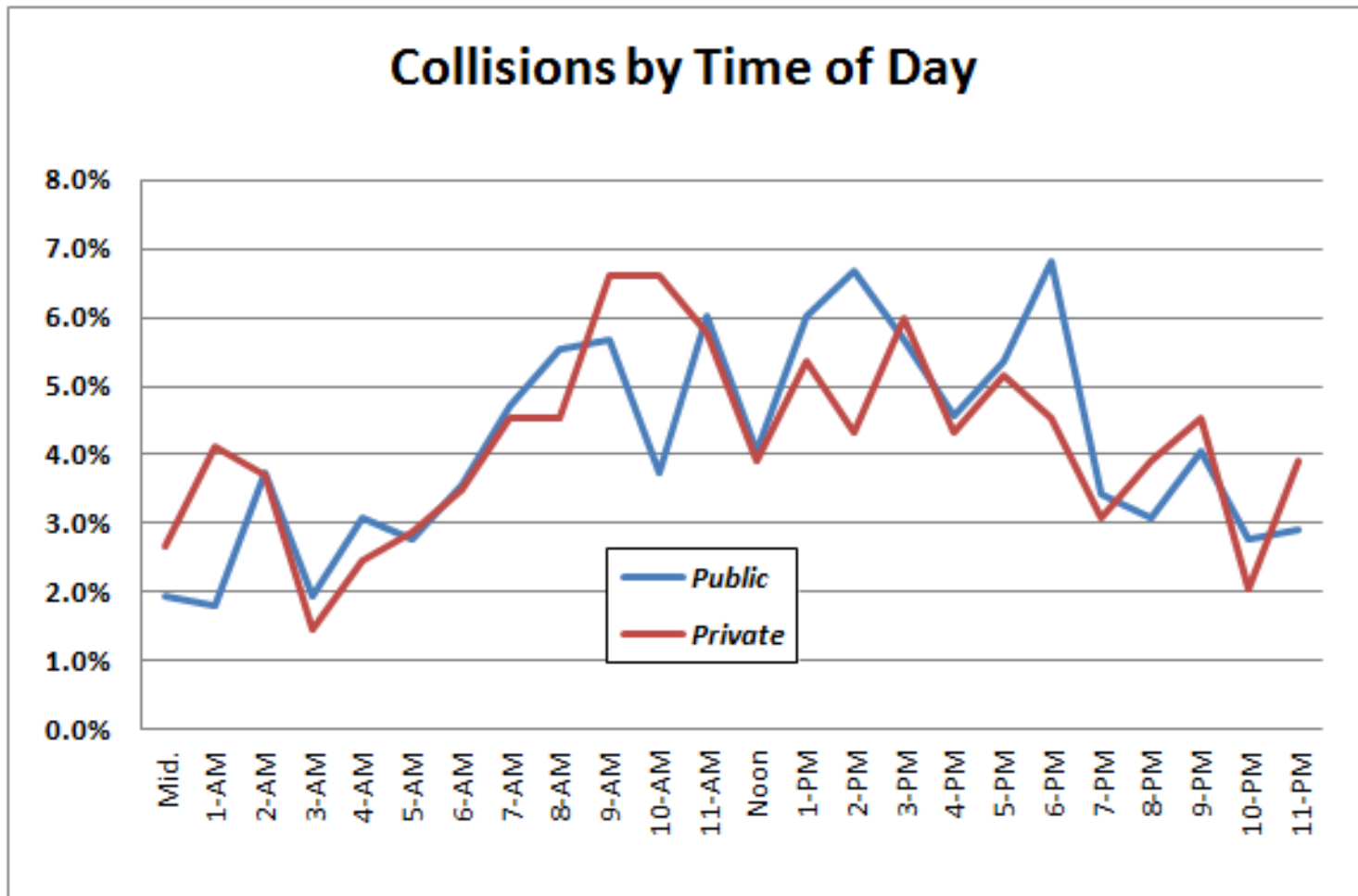
At Public Crossings - 37% of Collisions Occur at Crossings with Passive Warning Signs and 63% at Crossings Equipped with Train Activated Warning Devices

Collisions - Month of Year



Public Peak is December and Private is January

Collisions - Hour of Day



***Private Crossing Collisions Peak at 9 to 10 am; and
Public Crossing Collisions at 5 to 6 pm***

Collisions - Location

Private Category	Total	%	Killed	%	Injured	%
Farm	84	17.3%	10	33.3%	27	20.0%
Industrial	157	32.4%	9	30.0%	50	37.0%
Recreational	12	2.5%	1	3.3%	1	0.7%
Residential	56	11.5%	8	26.7%	15	11.1%
RR Yard	176	36.3%	2	6.7%	42	31.1%
Total	485	100.0%	30	100.0%	135	100.0%

For Collisions

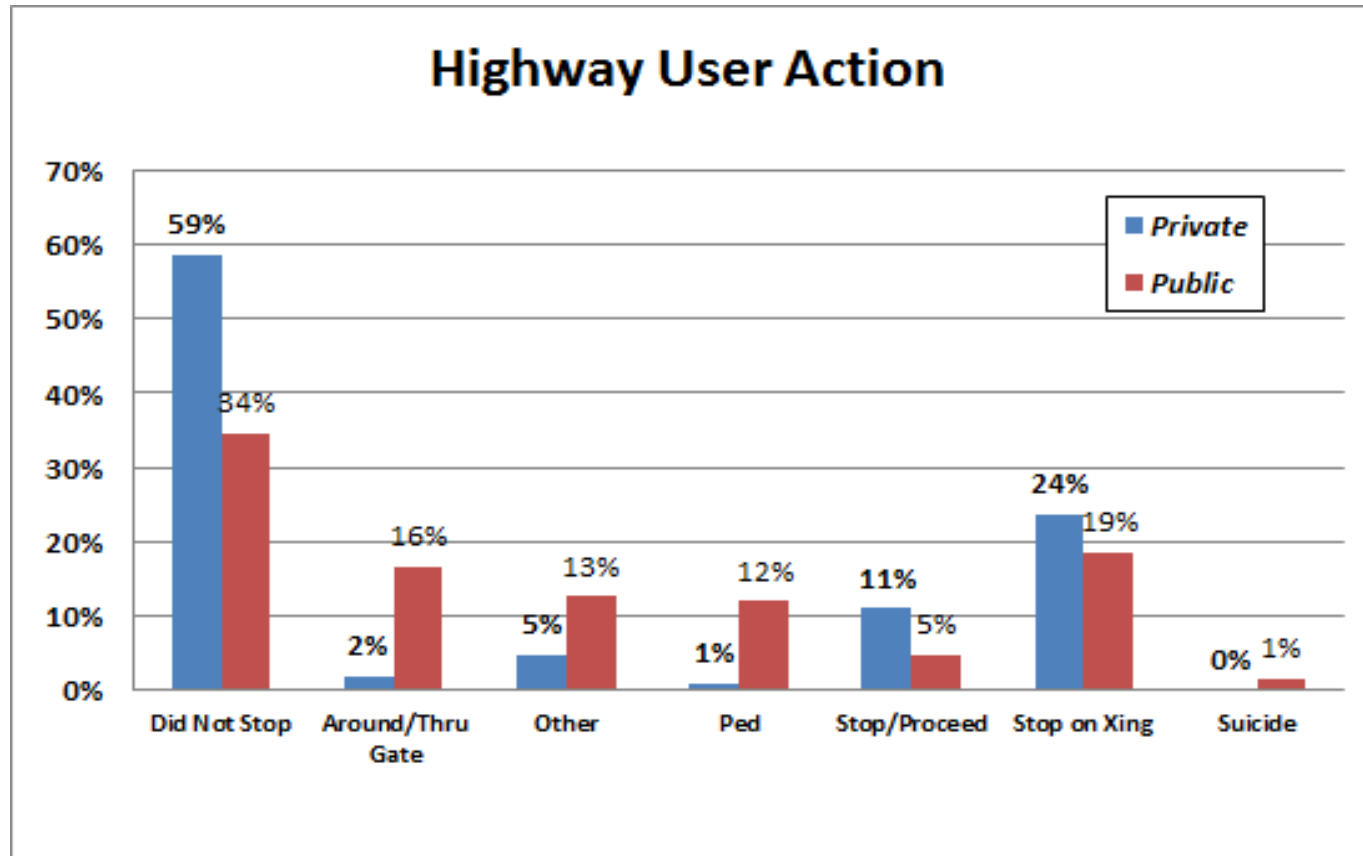
Of 5 Types of Land Use

Rail Yards are Number 1 Location; Followed by Industrial Crossings; Farm Crossings and Residential Crossings

For Fatalities

Farm Crossings are Number 1 Location; Followed by Industrial Crossings and Rail Yard Crossings

Collisions - Did Not Stop or Yield at Crossing



85% of Collisions At Private Crossings Occur Because the Train Struck the Highway User, In Contrast to 62% of Collisions at Public Level Crossings