



2016 International Crosstie & Fastening System Symposium



University of Illinois at Urbana-Champaign
Champaign-Urbana, IL

14-16 June 2016

In Partnership with



Welcome – We are excited you are here!



**2016 International
Crosstie & Fastening System
Symposium**

Safety Briefing

- **Emergency Exits** → Right and Left of room 1310
 - Reassemble on north side of Main Street (north of Yeh Student Center)
 - Use the buddy system, look out for your neighbor
- In the event of **severe weather** please take shelter in basement of Newmark Lab
 - Stairs located inside Newmark Civil Engineering Lab, on the northwest corner of the building (no basement under Yeh Center)
 - UIUC personnel will receive text alerts
- Who is **CPR Certified**?
- **AED** in Newmark Crane Bay (Near Center of Bay)

Safety Briefing (Cont.)

- Newmark Crane Bay – Please use caution
- Please push in your chairs and note any tripping hazards
- No smoking anywhere on UIUC's campus
- Campus Phone Emergency Number: 11911
 - For cell phone users, please dial 911
 - Assign designated callers (Csenge and Dersch)
- Meeting Location: **Newmark Civil Eng. Lab, Yeh Student Center, 205 N. Mathews Ave, Urbana, IL**
 - Also listed on front of Symposium program

Safety Briefing (Active Shooter)

- **Run** - Leaving the area quickly is the best option if it is safe to do so.
- **Hide** - When you can't or don't want to run, take shelter indoors.
- **Fight** - As a last resort, you may need to fight to increase your chances of survival.
- More information: <http://police.illinois.edu/emergency-preparedness/run-hide-fight/>

Thank You 2016 Symposium Sponsors



And a big thanks to the RTA for partnership



RailTEC Research and Support Staff

TECHNICAL RESEARCH STAFF

- Marcus Dersch - Senior Research Engineer
- Yu Qian - Research Engineer
- Matt Csenge - Manager of Experimentation



ADMINISTRATIVE SUPPORT STAFF

- Tim Gress - Managing Director
- Lilabeth (LB) Frye - Rail Program Coordinator
- Angie Stanford - Rail Program Coordinator
- **Emma Ehrenhart - Rail Program Coordinator and Lead Symposium Organizer**
- Kim Schlichting - Rail Program Coordinator



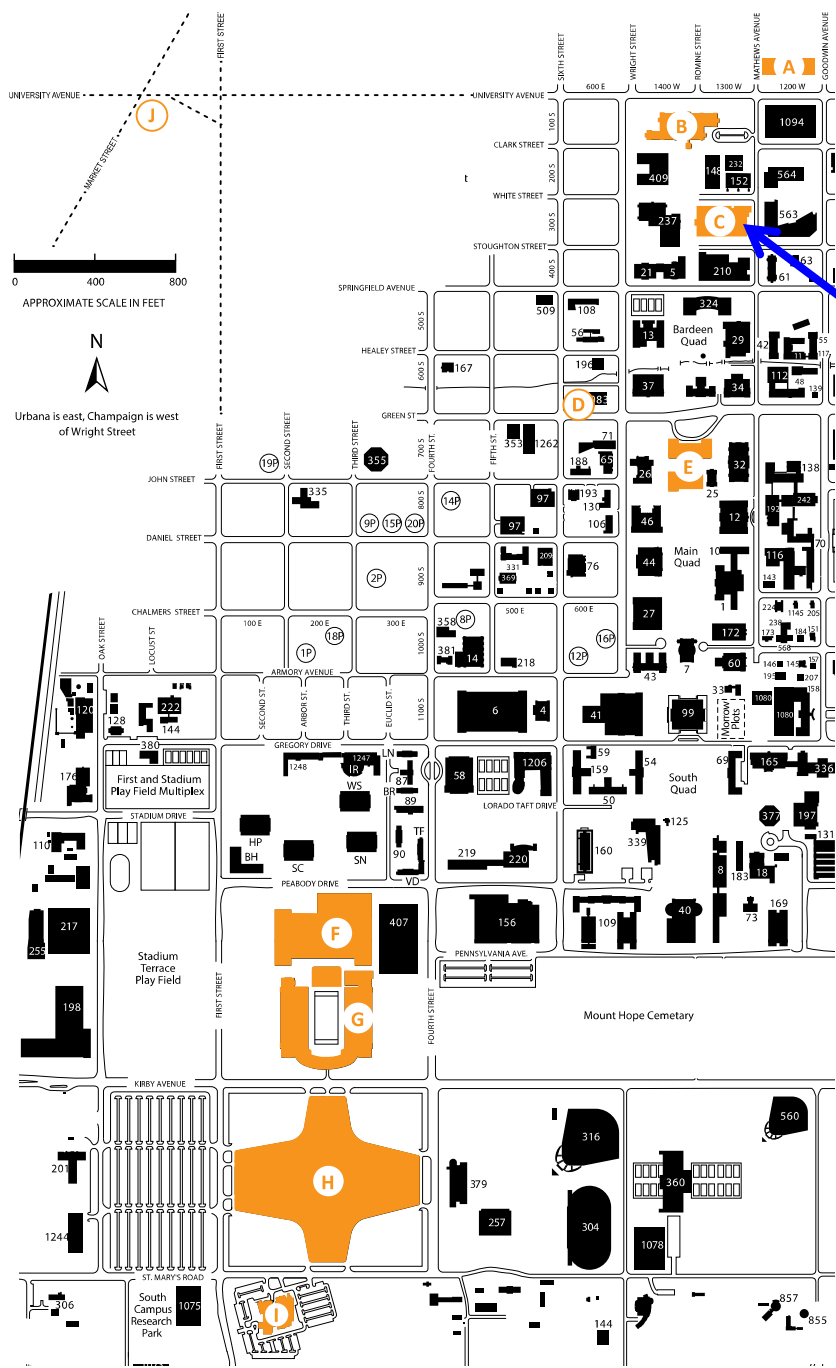
Symposium Program Changes

- **Session 4 – Tuesday at 3:45 PM**
 - Antonio Cabrera (NYCTA) – Cancelled
- **Session 6 – Wednesday at 10:15 AM**
 - D. Mark Haines (Mnemonics Inc.) – Cancelled

Symposium Administrative Items

- Overview of Newmark Civil Engineering Lab (NCEL) and the Yeh Student Center
 - Primary Meeting Room: 1310 (All Technical Sessions)
 - Conference Room: 3350 [Reserve at registration desk]
 - Breaks on 1st Floor in Yeh Center Lobby
- Wireless Internet Access sheets are inside your folder
- Uploading Symposium PPTs → Please see Emma Trapp if you haven't already uploaded your PPT
 - **20 minutes maximum per presentation**
- Lunch Today and tomorrow in the Electrical and Computer Engineering (ECE) Building → **Follow student guides**
- Happy Hour Today at Murphy's Pub → See Map (Page 5)

University of Illinois at Urbana-Champaign Campus Map



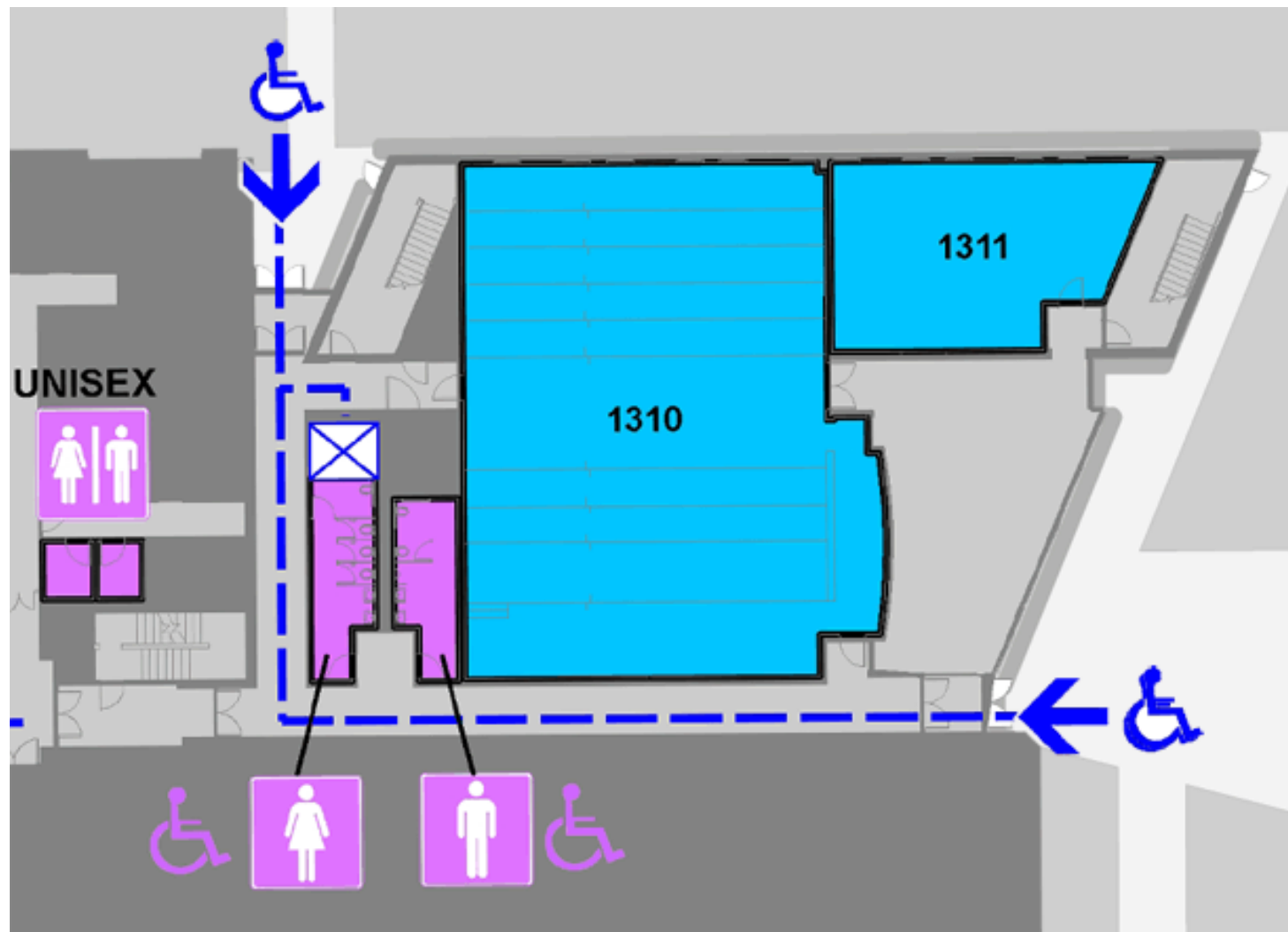
**YOU
ARE
HERE**

- A** Hampton Inn
- B** Beckman Institute
- C** Newmark Lab & Yeh Center
- D** Murphy's Pub
- E** Illini Union
- F** PARKING OPTION 1 at ACTIVITIES and RECREATION CENTER (ARC)
- G** MEMORIAL STADIUM
- H** PARKING OPTION 2 at ASSEMBLY HALL
- I** iHOTEL
- J** ILLINOIS TERMINAL

Note: See Page 5 of your Program for Campus Map

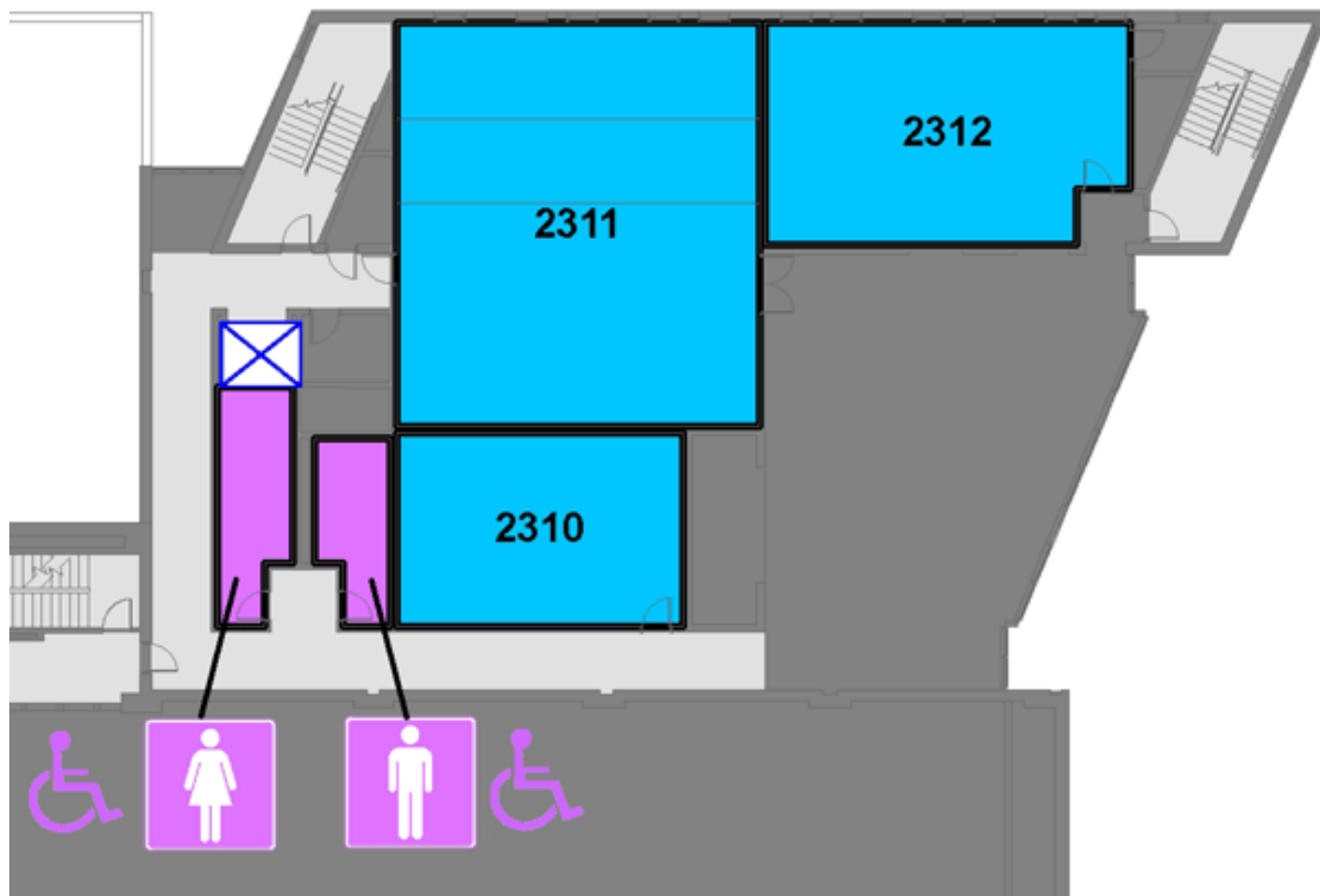
Yeh Student Center (Newmark Civil Engineering Lab)

1st
Floor



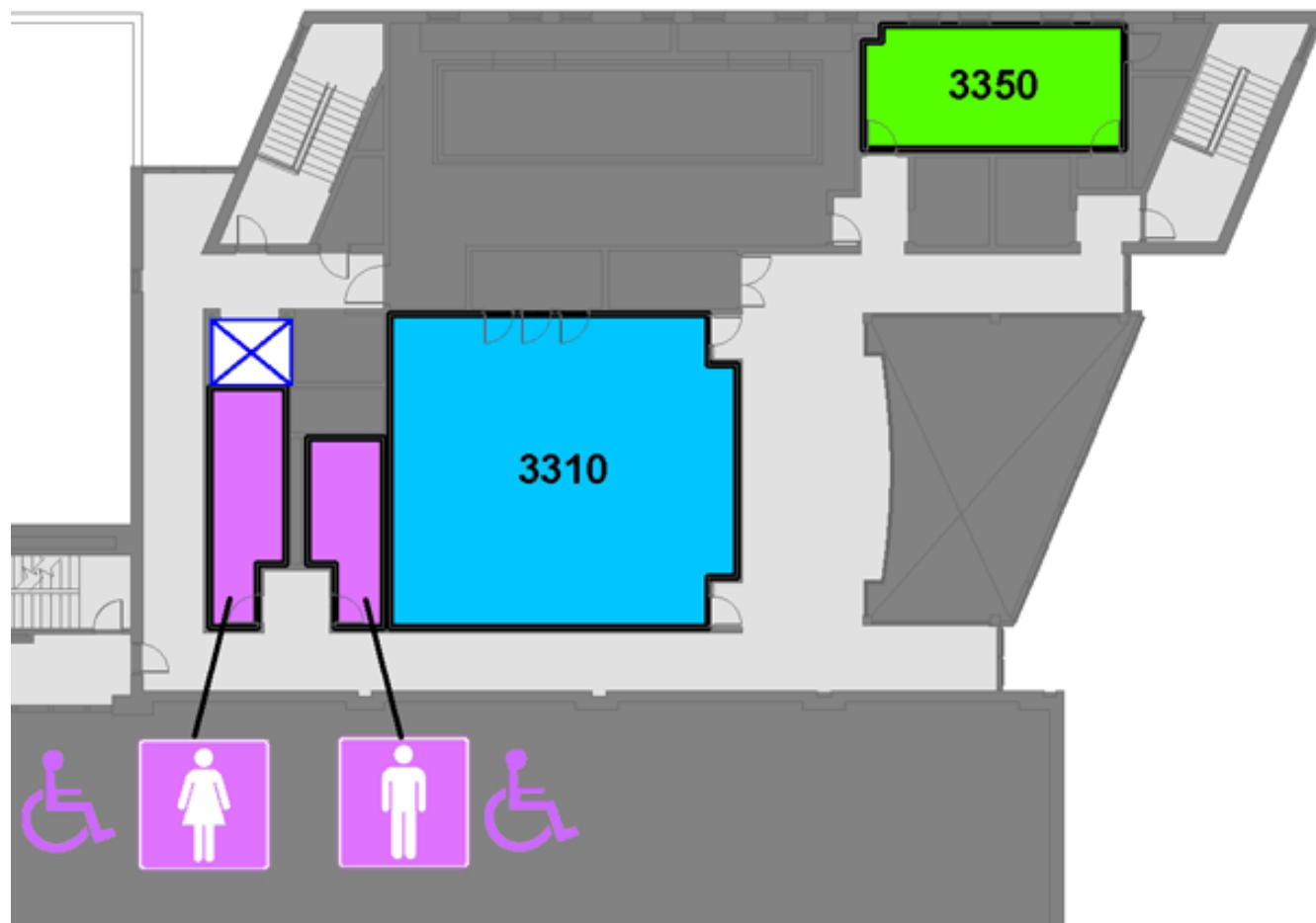
Yeh Student Center (Newmark Civil Engineering Lab)

2nd
Floor



Yeh Student Center (Newmark Civil Engineering Lab)

3rd
Floor



2016 Symposium Technical Tour Info

- Make certain you are on the cleared list:
 - Non US Citizens - Passport was submitted to RailTEC by 1 May 2016 (ask Registration Booth if in doubt)
- **Please bring proper identification tomorrow:**
 - **Non US Citizens – Bring Passport**
 - **US Citizens – Bring Driver’s License**
- **Safety Briefing tomorrow (Wed) after first break**
- Personal protective equipment (PPE) requirements
 - Safety glasses will be provided
 - Steel-toed boots are **required**
- See Page 9 of Program for more info
- Special thanks:



**US Army Corps
of Engineers®**

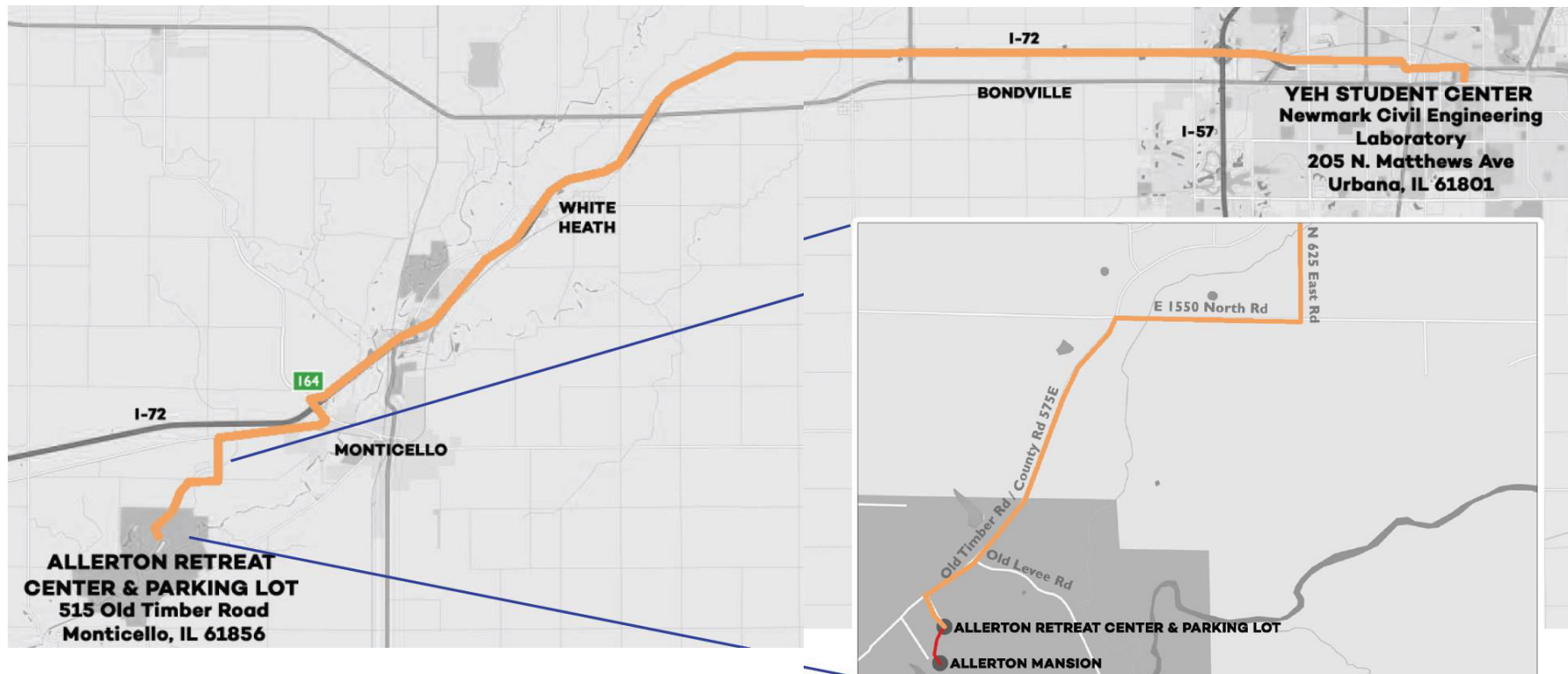
Allerton Park Keynote Address and Symposium Dinner

- Busses will provide transportation (leaving Yeh Center at 3:00 PM for technical tour)
 - Busses will be secure, and you can leave personal belongings on them
- Keynote Address at 5:30 PM
 - **David Connell, UPRR Vice President of Engineering (retired)**
- Social Hour at 6:00 PM
- Dinner at 7:00 PM
- Busses depart for return trip to Champaign at 8:30 PM
 - Will drop at Hampton first, then other hotels
- **See Pages 12 and 13 of Program for more information**



Allerton Park - If you plan to drive your own car...

- You will need to drive to both the technical tour at RAIL and the keynote event since they are back to back
- Please sign up and pick up additional information at the registration booth regarding directions and entry procedures to RAIL
 - You will need to arrive at RAIL between 3:15 and 3:30 PM
- Please see Pages 12 and 13 for more information



Department of Civil and Environmental Eng.

Welcoming Remarks

Dr. James LaFave

- **Titles**

- Professor in Civil Engineering
- Associate Head and Director of Undergraduate Studies
- CEE Excellence Faculty Scholar

- **Education**

- BS and MS: University of Illinois
- PhD: University of Michigan

- **Research Interests**

- Experimental behavior & analytical modeling of connections & joints for reinforced concrete, brick veneer, timber, GFRP, aluminum, and elastomeric components of structural systems subjected to wind & earthquakes; seismic assessment of buildings & bridges; integral abutment bridge behavior; fiber-reinforced concrete; cross-cultural engineering communication.



Current Infrastructure Research Sponsors

- **Governmental Agency**

- Federal Railroad Administration (FRA)
- Federal Transit Administration (FTA)



U.S. Department of Transportation
Federal Railroad Administration



U.S. Department of Transportation
Federal Transit Administration

- **Railroad / Owner**

- Union Pacific Railroad (UPRR)
- New York City Transit (NYCT)



BUILDING AMERICA®



New York City Transit

- **Concrete Crosstie Supplier**

- GIC
- RAIL.ONE



RAIL.ONE

- **Fastening System Supplier**

- Rail Product Solutions (RPS)
- Vossloh Fastening Systems (VFS)



vossloh

- **Miscellaneous**

- National University Rail Center (NURail)
- University of South Carolina
- Non-Destructive Testing (NDT)



NDT CORPORATION
Nondestructive & Geophysical Testing



**UNIVERSITY OF
SOUTH CAROLINA**

Industry Partners

FRA Tie and Fastener BAA Industry Partners:



BUILDING AMERICA®



A Caterpillar Company



FTA Tie and Fastener Industry Partners:



A Caterpillar Company



© DELACHAUX GROUP

Thanks for Attending and Welcome to the University of Illinois!

