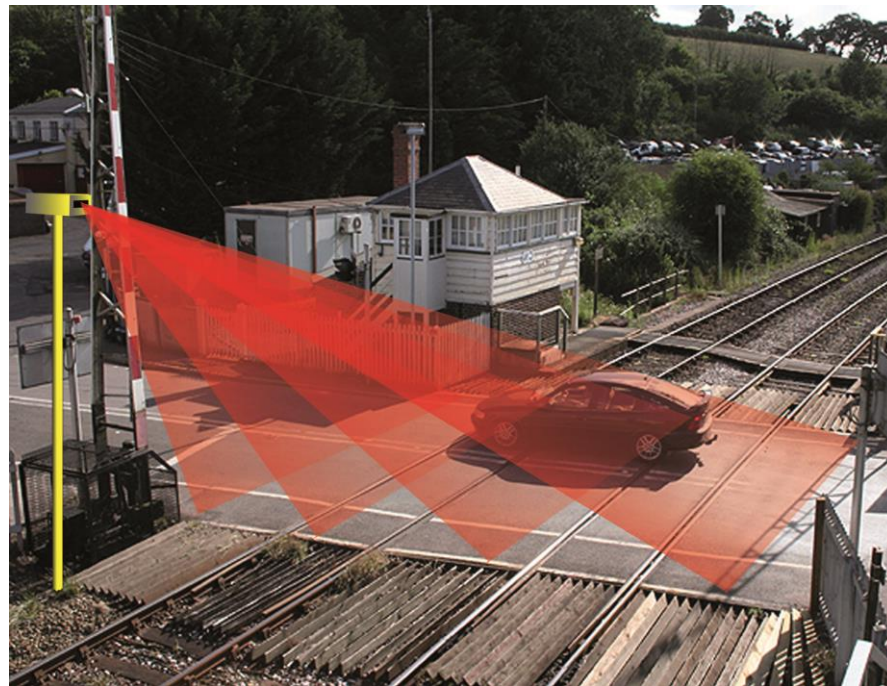
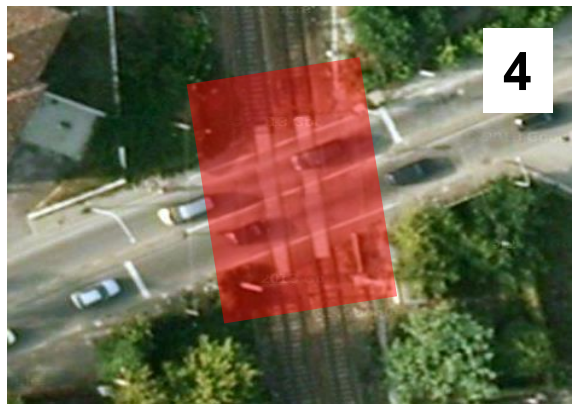
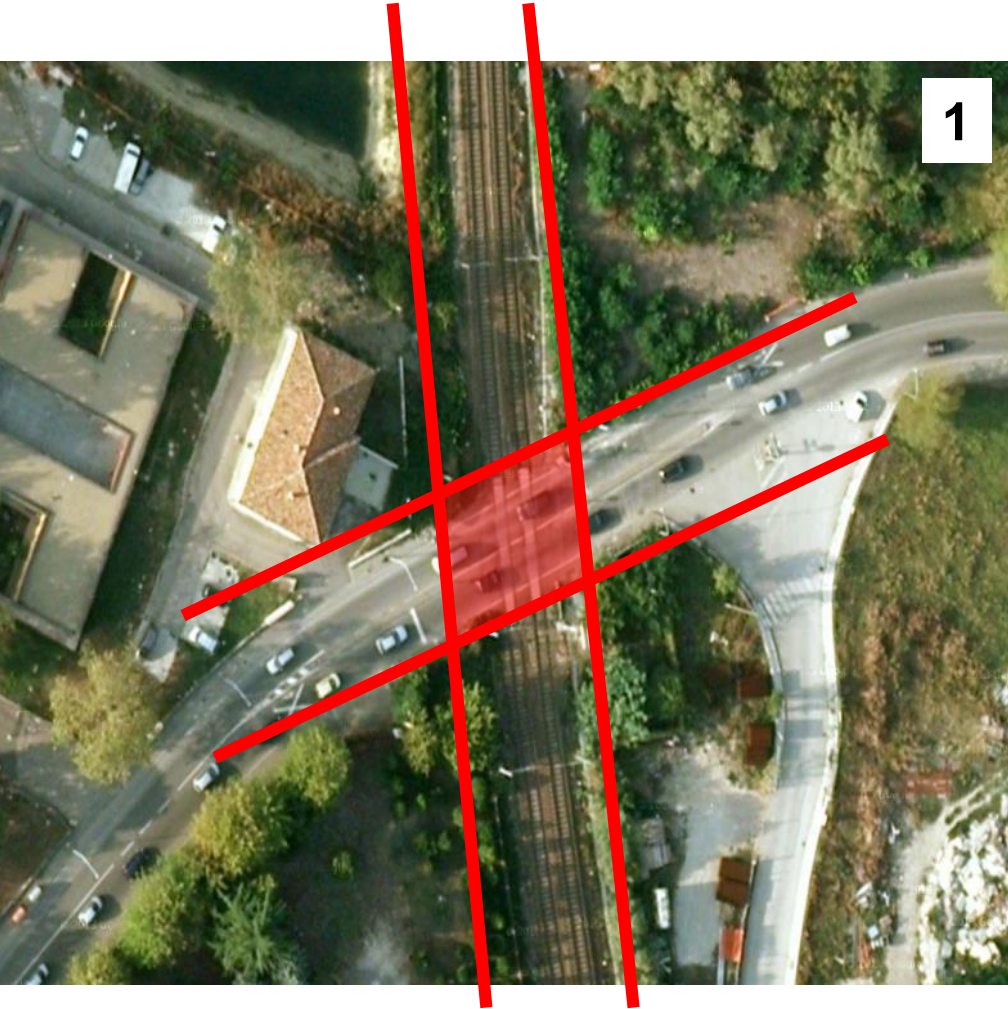


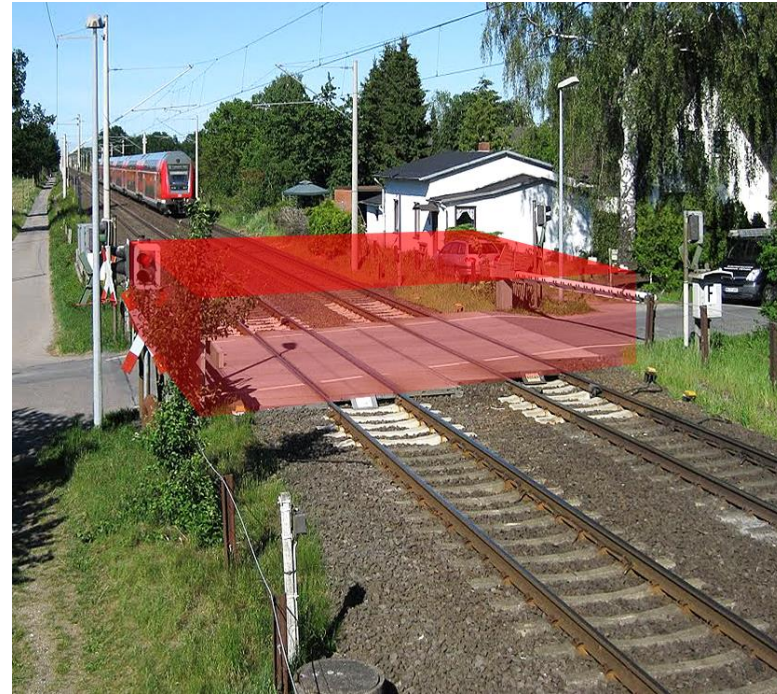
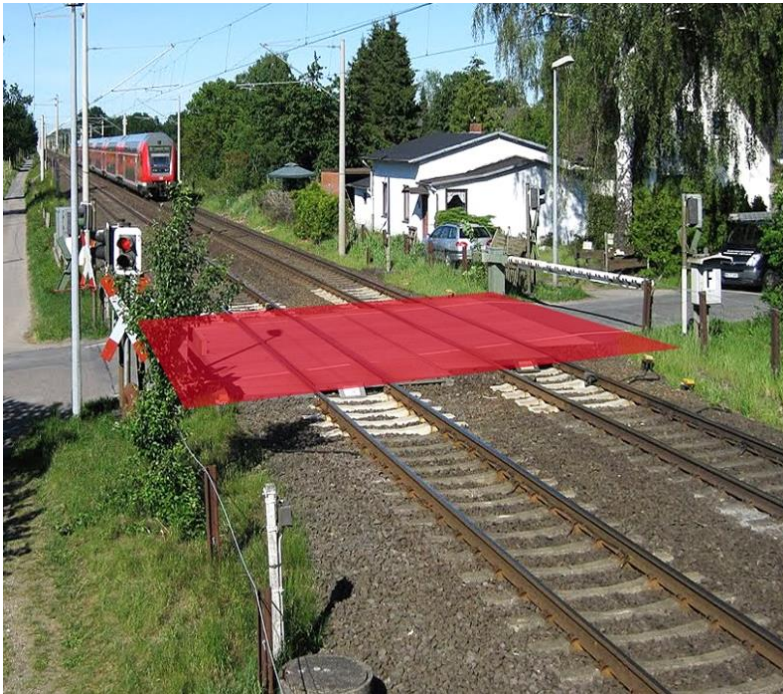
3D Laser Scanner for detecting obstacles in the level crossing area



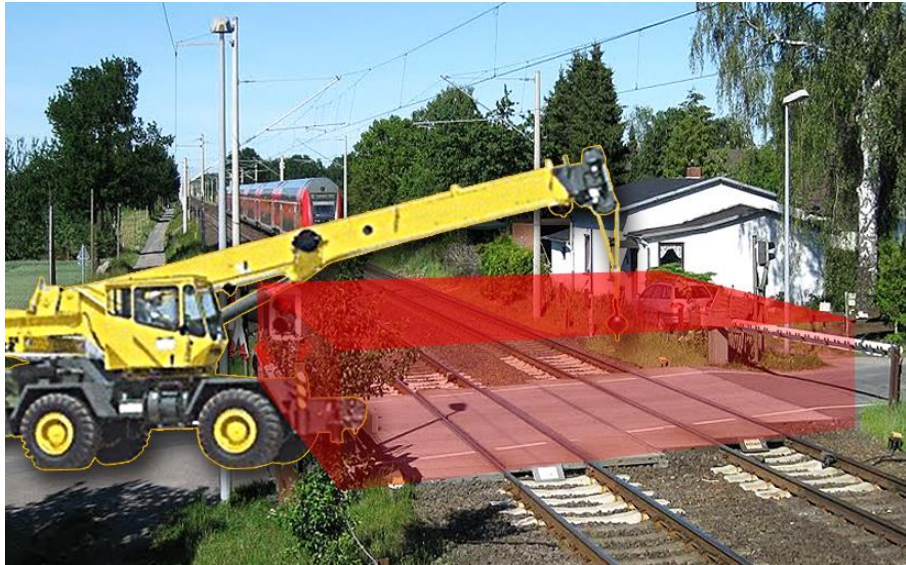
Define the area to detect



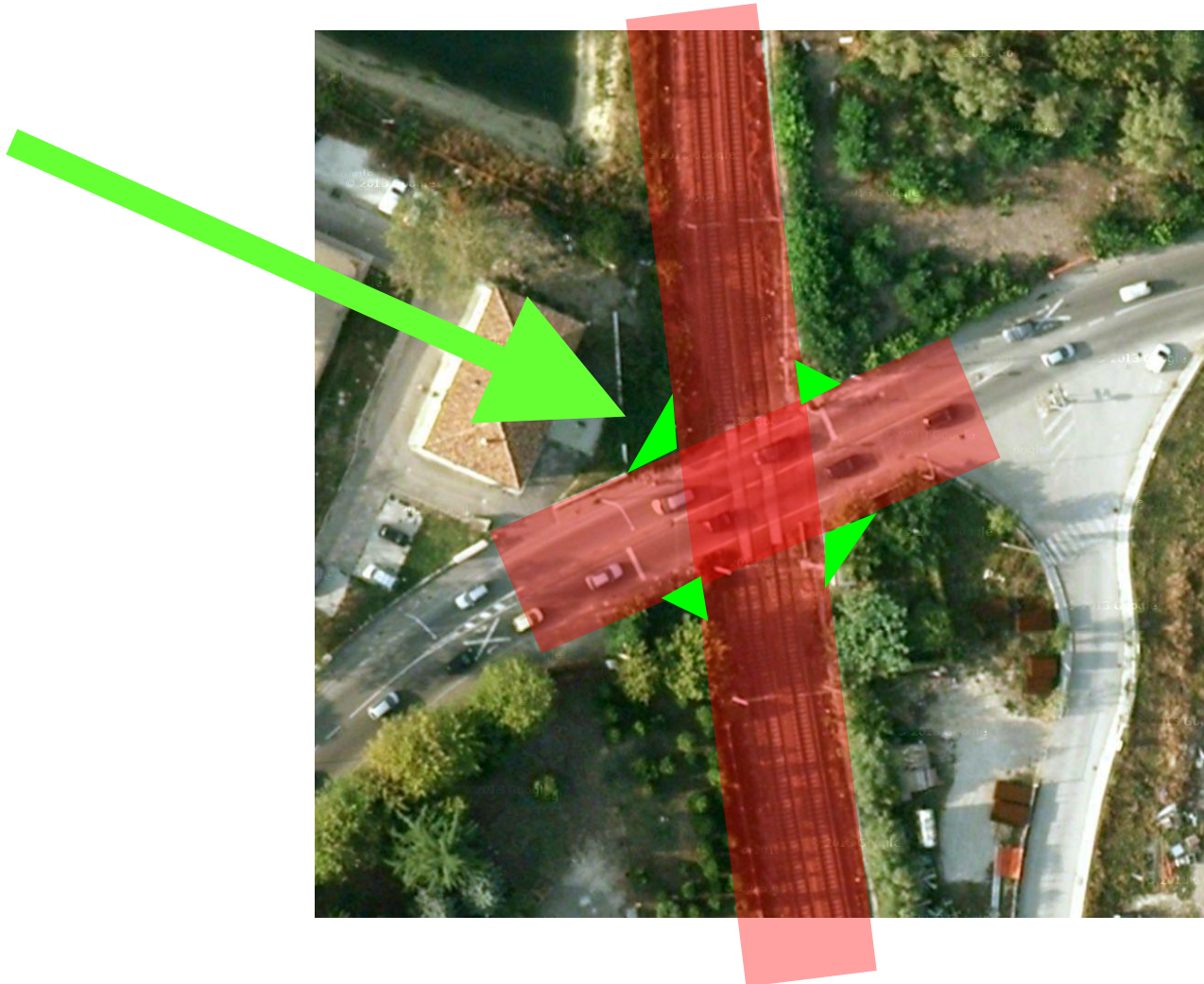
Define the volume to detect



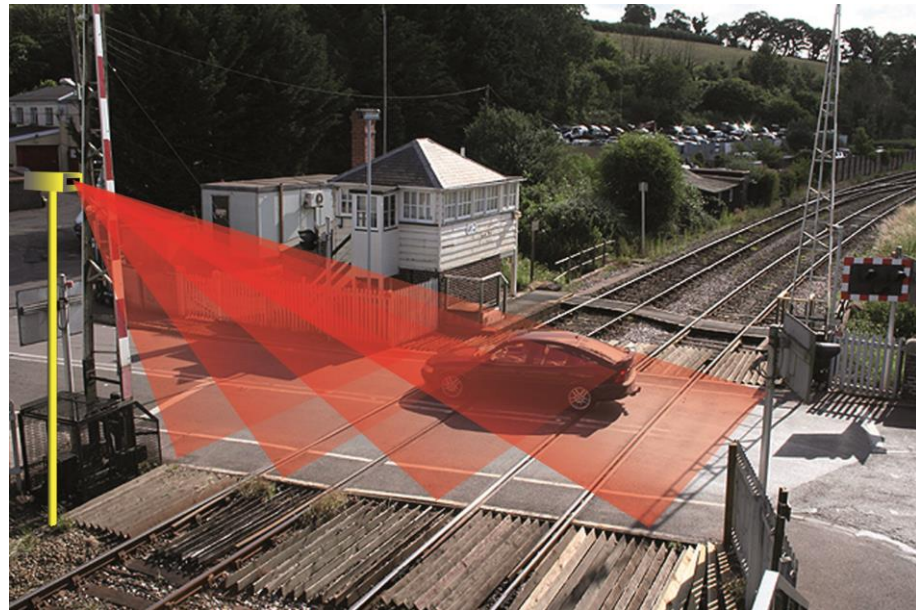
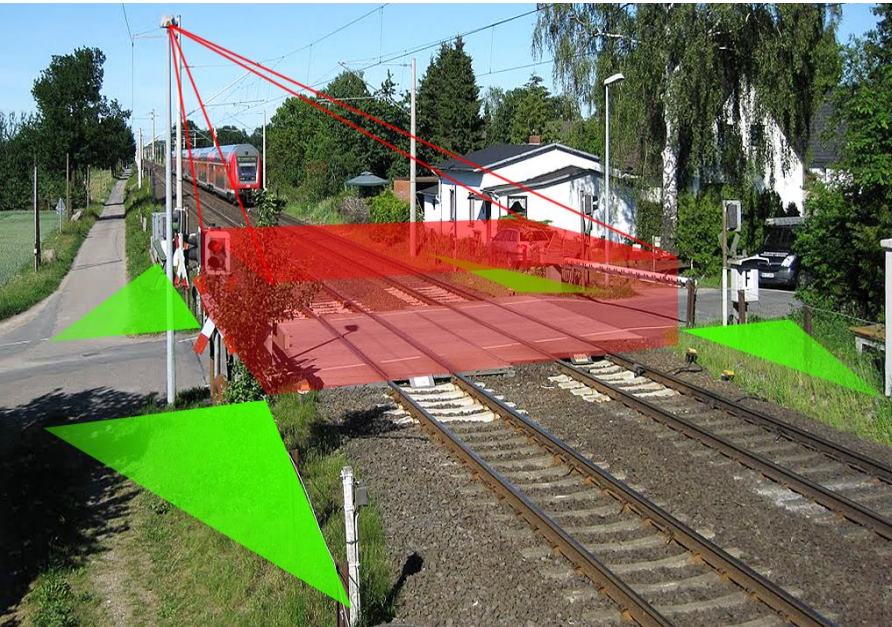
Define the volume to detect



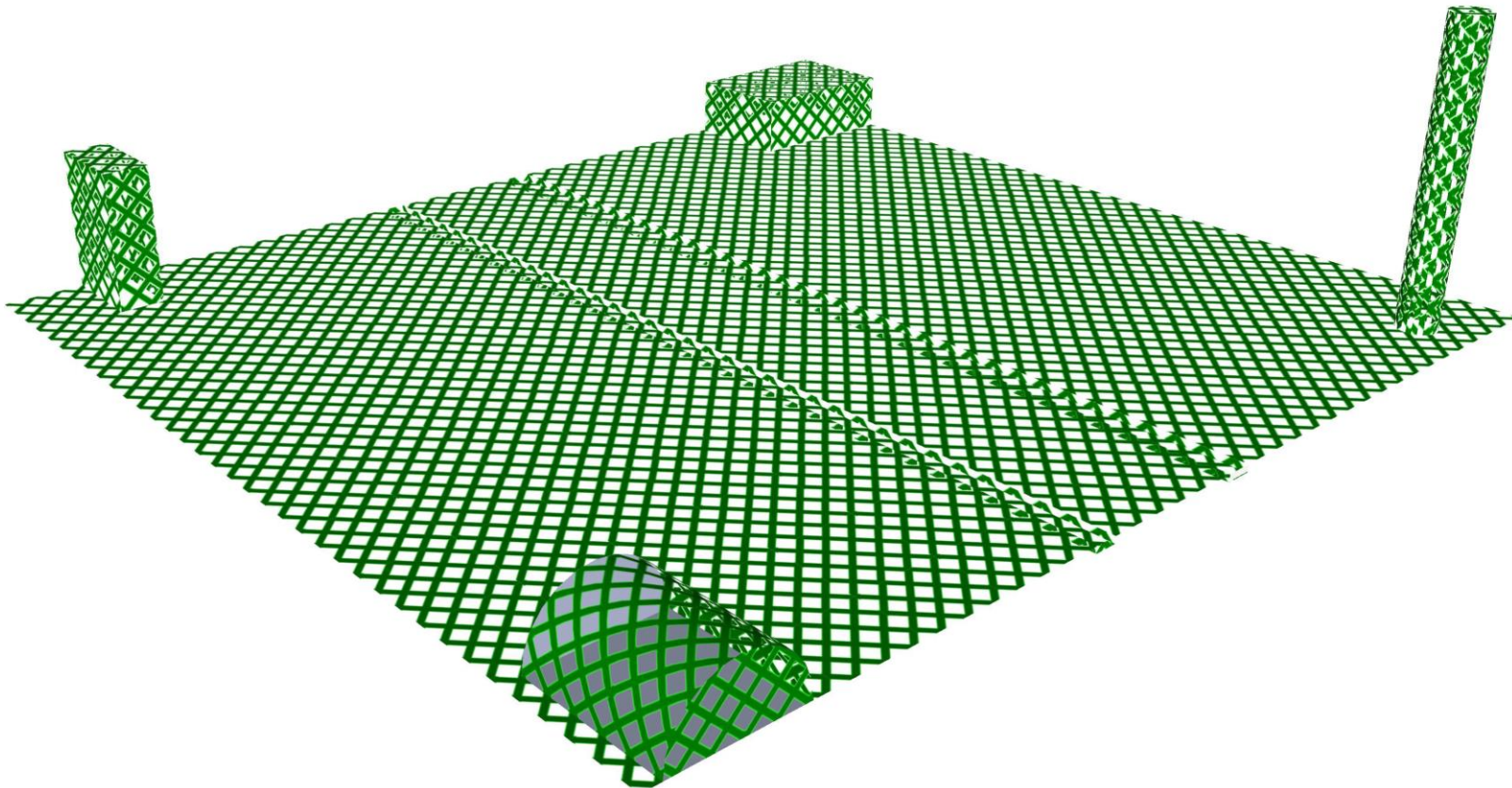
Define the position of laser detector



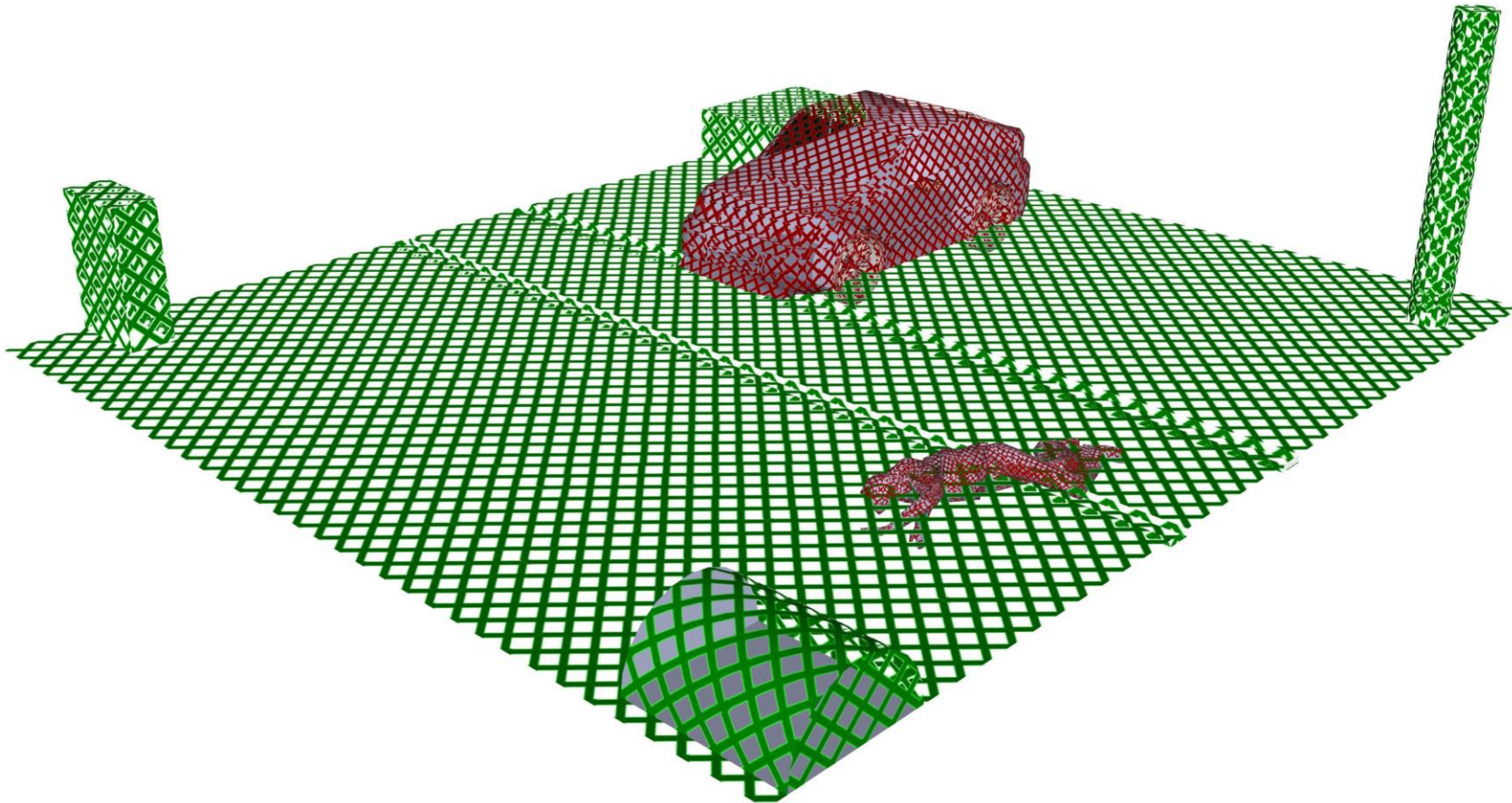
Define the position of laser detector



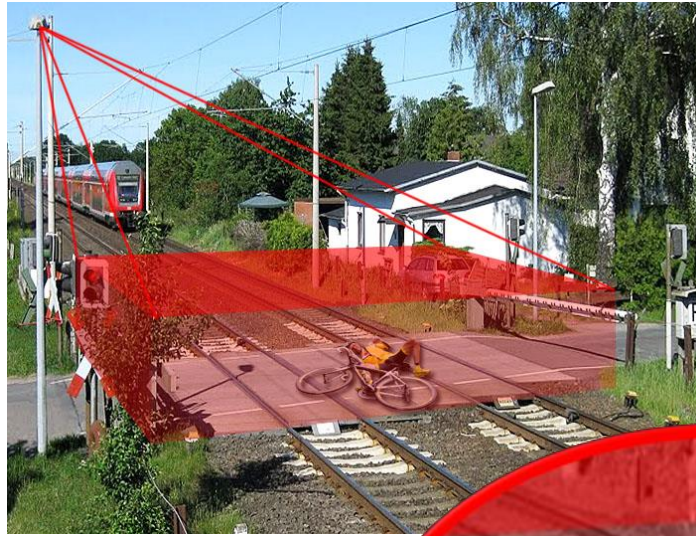
Self-learning of detection area with no obstacle



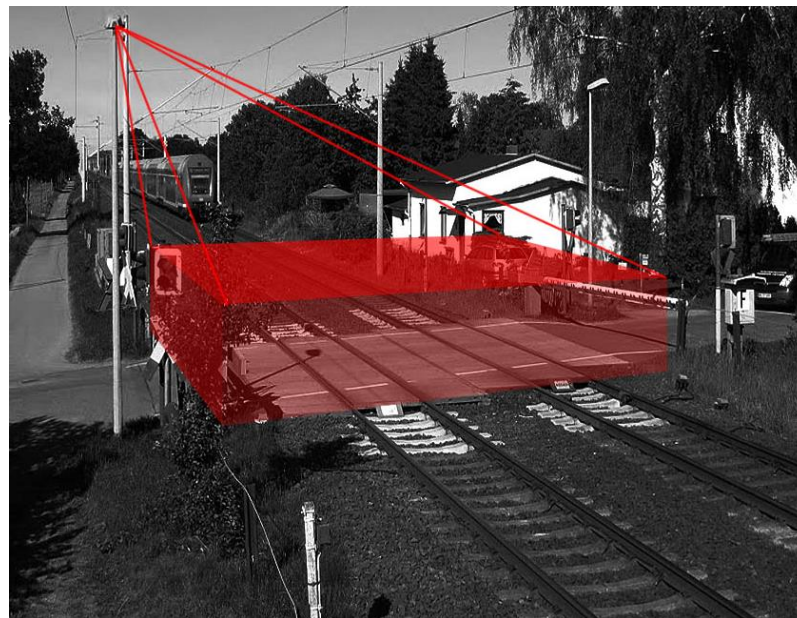
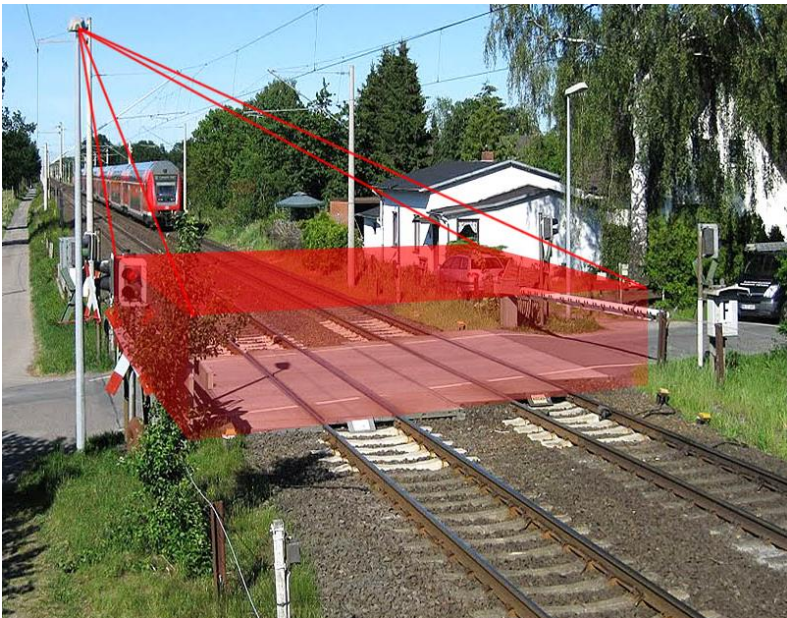
DETECTING OBSTACLES



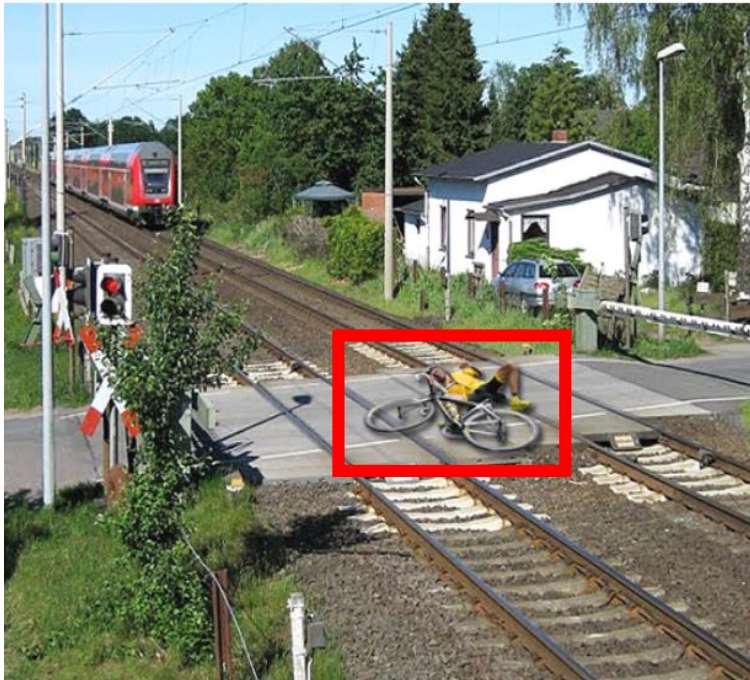
DETECTING OBSTACLE



- Measuring the size of obstacles
- Working by day and by night



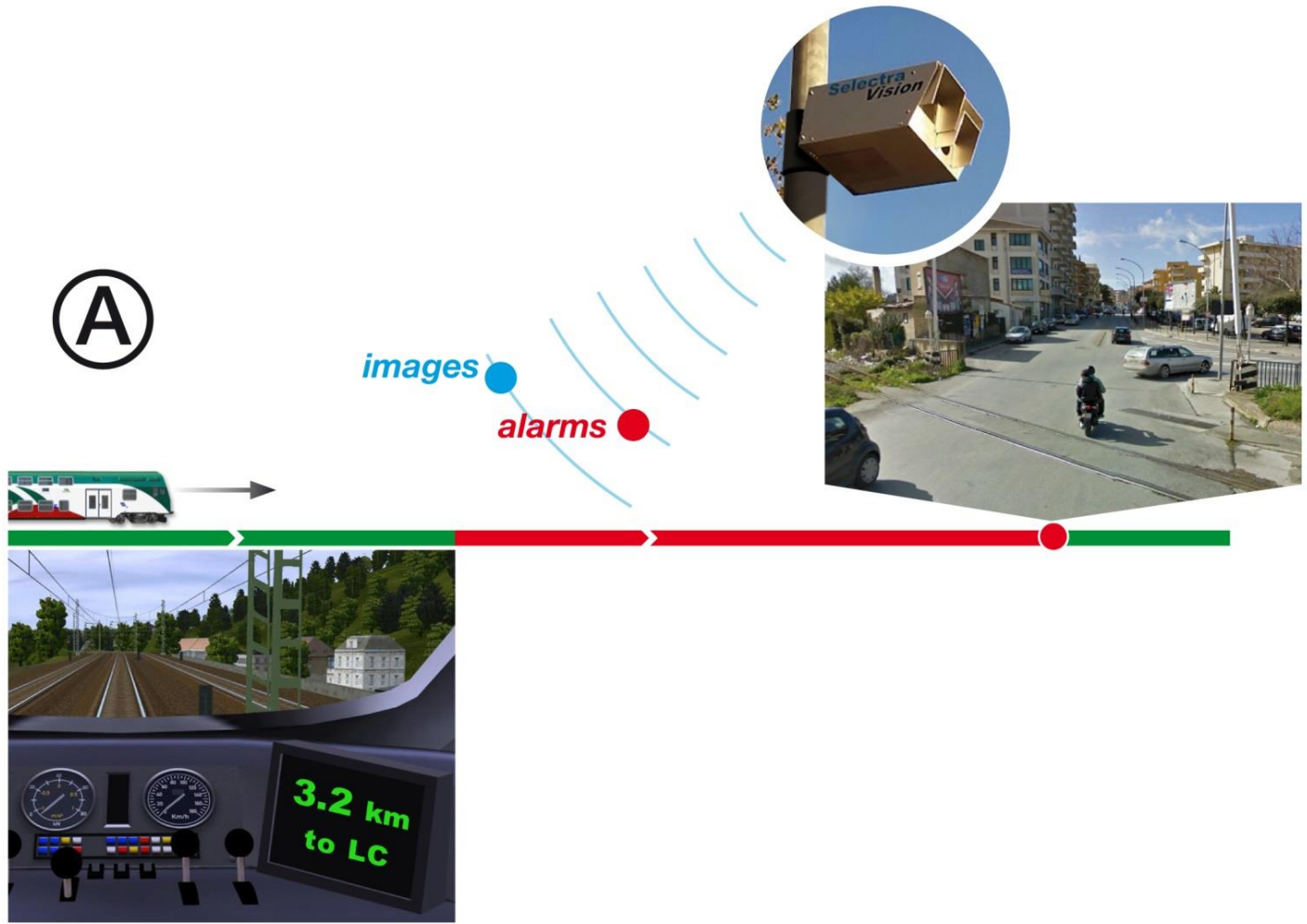
Auxiliary camera for video surveillance



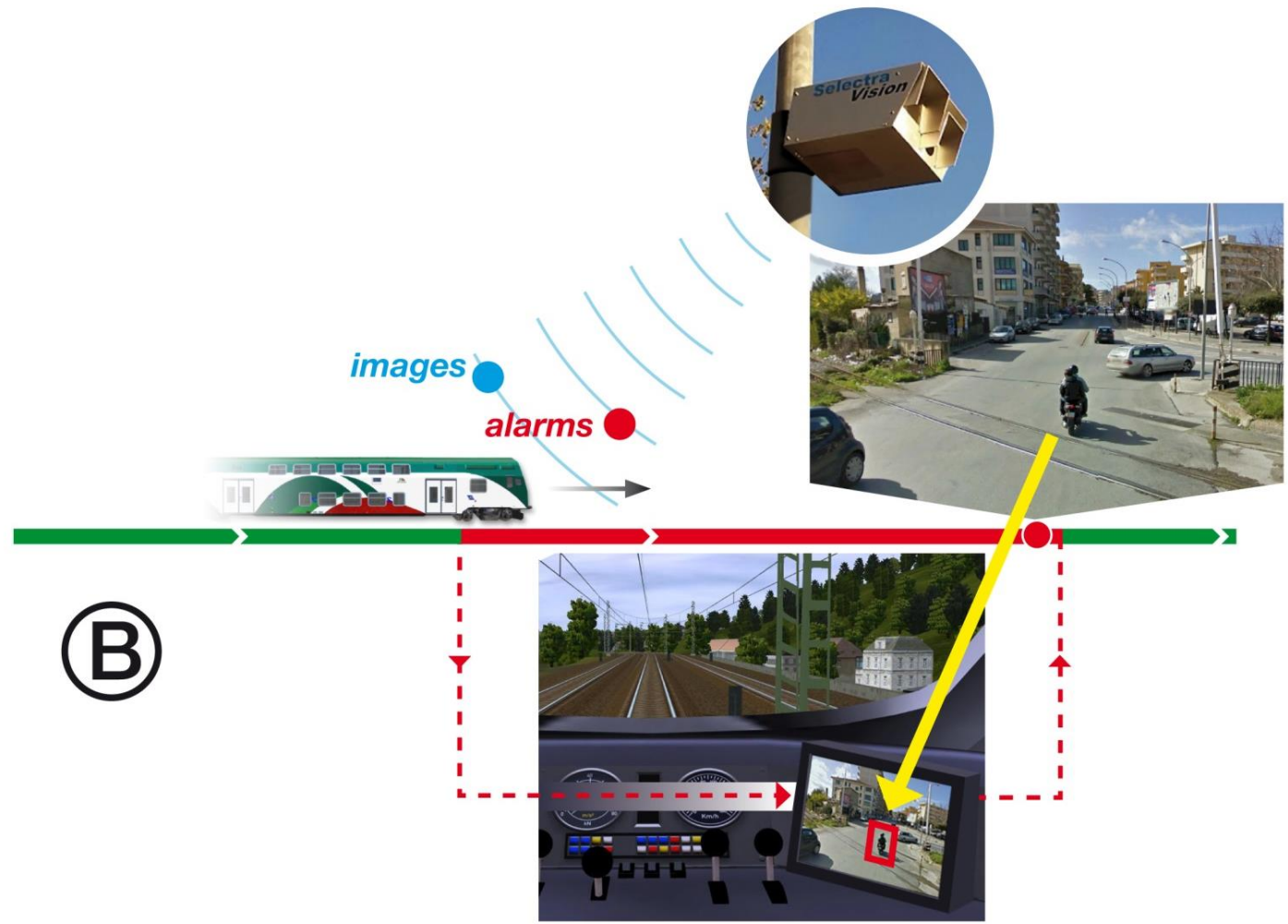


Video camera
and 3D laser
scanner are
integrated in
the same box

Sending alarms to a remote centre or to the train



Sending alarms to a remote centre or to train



Thank you
for your attention