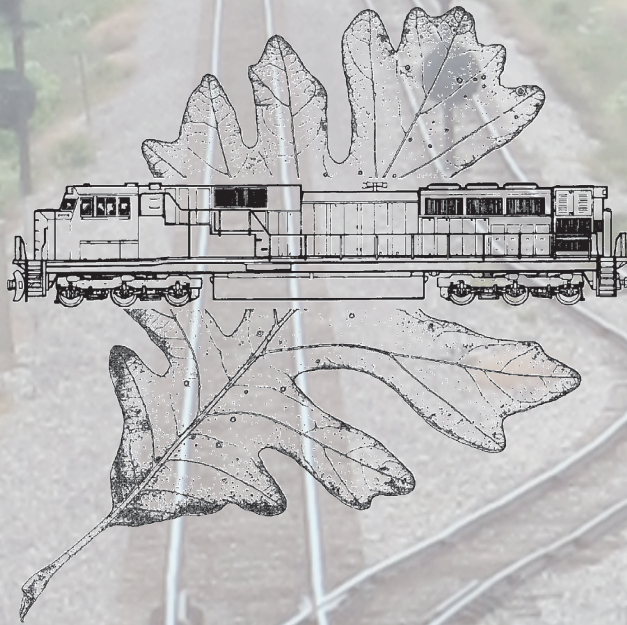


2012 RAILROAD ENVIRONMENTAL CONFERENCE

16-17 OCTOBER 2012



PROGRAM

RAILTEC

UNIVERSITY OF ILLINOIS AT URBANA-CHAMPAIGN



American Short Line and
Regional Railroad Association

AREMA

American Railway Engineering and
Maintenance-of-Way Association



The Railway Association of Canada



ASSOCIATION
OF AMERICAN
RAILROADS



National University Rail Center - NURail
USDOT-RITA Tier I University Transportation Center

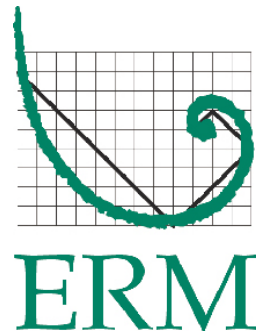
SUPPORTERS 2012

We wish to recognize and thank our Railroad Environmental Conference - 2012 Supporters.
Their financial support is an essential component in making this event a success.

10+ YEAR SUPPORTERS:



ONE COMPANY *Many Solutions* SM



Distinguished Supporter:



5+ YEAR SUPPORTERS:



TETRA TECH



Conference Overview and Featured Events

MONDAY, OCTOBER 15TH, 2012

Exhibitor set-up 1:00pm - 5:00pm

TUESDAY, OCTOBER 16TH, 2012

Continental Breakfast 7:00am - 9:00am
Registration Open 7:00am - 5:00pm
Presentation Sessions 8:00am - 12:10pm
Luncheon 12:10pm - 1:10pm
Presentation Sessions 1:30pm - 4:30pm
Reception/Poster Presentations 4:30pm - 6:45pm

AREMA COMMITTEE 13 BANQUET*- Illini Union Ballroom - 2nd Floor
Banquet 6:45pm

AREMA Banquet Speaker:

Chester Culley 8:00pm
General Director - Environmental Quality - Kansas City Southern Railroad

WEDNESDAY, OCTOBER 17TH, 2012

AREMA Committee 13 meeting 7:00am - 8:00am
(314 Illini Union)
Continental Breakfast 7:00am - 9:00am
Registration Open 7:00am - 5:00pm
Presentation Sessions 8:00am - 11:40am
Luncheon 11:40am - 1:20pm

Keynote Speaker:

Colin Harris 12:00pm
Business Development Manager, North America - Carbon Disclosure Project
"Carbon Disclosure Project: Growth, Reach and Impact"

Presentation Sessions 1:20pm - 5:15pm
Adjourn 5:15pm
Exhibitor Breakdown 5:15pm - 7:30pm

Technical Session Schedule (some sessions are concurrent)

Tuesday

Plenary Session 8:10am - 10:10am, Illini Room A
Environmental Planning of Passenger and Freight Rail Projects 10:30am - 11:30am, Illini Room A
Noise and Vibration 10:30am - 11:30am, Room 210
Risk Management 11:30am - 2:30pm, Room 210
Pollution Prevention 1:10pm - 2:10pm, Illini Room A
Environmental Information Management Systems 2:50pm - 4:30pm, Illini Room A
Compliance 2:50pm - 4:30pm, Room 210

Wednesday

Environmental Response 8:00am - 9:40am, Illini Room A
Remediation 10:00am - 5:15pm, Illini Room A
Natural Resources 8:00am - 9:40am, Room 210
Sustainability 10:00am - 11:20am, Room 210
Energy, Emissions, and Air Quality 1:20pm - 3:00pm, Room 210
Stormwater and Wastewater 3:00pm - 5:15pm, Room 210

Spoken Presentations - Tuesday 16 October - Morning

Illini Room A		Illini Union - Room 210
	<p align="center">Plenary Session Moderators: Leo Thorbecke - AECOM Chris Oakes - Norfolk Southern</p>	
8:00	<p>Welcome and Introduction Christopher Barkan - Professor and Director of RailTEC University of Illinois at Urbana-Champaign</p>	
8:10	<p>Environmental Issues Affecting North American Railroads Robert Fronczak - Association of American Railroads</p>	
8:30	<p>Alternative Fuels Update Michael Kraeski - Environmental Resources Management Chester Culley - Kansas City Southern</p>	
8:50	<p>All of Your Storm Drain Maps Are Wrong Ross Dunning - Kennedy/Jenks Consultants Jennifer L. Wiener - BNSF</p>	
9:10	<p>Sustainability Approach at BNSF Railway John Lovenburg - BNSF Railway</p>	
9:30	<p>Natural Gas Pipeline Projects and How They Are Affecting the Railroads John Gullace - Manko, Gold, Katcher & Fox, LLP William Parry and Julia B. Herron - CSX Transportation, Inc.</p>	
9:50	<p>AAR Environmental Excellence Award Robert Fronczak - Association of American Railroads</p>	
10:10	BREAK - Illini Union Room B	
	<p align="center">Environmental Planning of Passenger and Freight Rail Projects Moderator: Gary Rozmus - Gannett Fleming</p>	<p align="center">Noise and Vibration Moderators: Lance Meister - Cross Spectrum</p>
10:30	<p>Overview of Climate Change Adaptation Strategies For Rail Steven Eget - Dewberry</p>	<p>Noise Abatement at Hump Yards Donald Seward, Jr. - AECOM Stuart Boykin - CSX Transportation, Inc.</p>
10:50	<p>Principled Environmental Messaging Roy Deitchman and Celia Ann Pfeckl - Antrak</p>	<p>Effects of Train Noise on Soundscapes and Animals in Natural Areas West of Chicago David Enstrom and David Tcheng - Illinois Natural History Survey,</p>
11:10	<p>Managing the Massachusetts Bay Transit Authority: Prioritization and Implementation of Cleanup of a MassTransit Network George Naslas and Frank Ricciardi - Weston & Sampson Engineers, Inc.</p>	<p>Tuned Mass Dampers Applications Paul Kampfraath - KamPa BV Guenther Veit and Helmuth Venghaus - S&V GmbH</p>
		<p align="center">Risk and Liability Management Moderators: Kevin Keller - HDR Engineering Bob Fronczak - AAR</p>
11:30		<p>Implementing a Rails-to-Trails Program - Supporting Beneficial Reuse of Underutilized Properties Andrew Montgomery and Tom Wurzinger - Geosyntec Consultants Raghu Chatrathi - CSX Transportation, Inc. Sam Ross - CSX Real Property, Inc.</p>
11:50		<p>Supporting Railroad Claims for Environmental Cost Recovery David Cranston - Greenberg Glusker Fields Claman & Machtinger LLP</p>
12:10	LUNCH and Supporter Acknowledgement - Illini Union Room 314	

Spoken Presentations - Tuesday 16 October - Afternoon

	Illini Room A	Illini Union - Room 210
	<p>Pollution Prevention Moderator: Don Girard - BNSF</p>	<p>Risk and Liability Management con't Moderators: Kevin Keller - HDR Engineering Bob Fronczak - HDR Engineering</p>
1:10	<p>Greening a Railroad Operation Morgan O'Connor - Xanterra Parks & Resorts at the Grand Canyon Railway</p>	<p>"There's Still an Issue with Asbestos?" Perceptions and Realities about Asbestos and Associated Regulatory Liability Joseph M. Gennette - Norfolk Southern Jamie Laubenthal - GEI Consultants, Inc.</p>
1:30	<p>Ultra Low Sulfur Diesel Storage and Dispensing Systems Glen Smith - Agus Consulting Lorri Grainawi - Steel Tank Institute/ Steel Plate Fabricators Association James Grady - AVP Technical Services</p>	<p>Risk Based and Process Focused Environmental Audits Erika Akkerman - CN Norm Parker - Parker & Associates, Inc.</p>
1:50	<p>Shreveport Drive-to-Zero Michael Kraeski - Environmental Resources Management Chester Culley - Kansas City Southern</p>	<p>The Use of "Faulty" Science in Eco Risk and Natural Resource Damage Assessments Daniel Smith and Steve Jones - Conestoga-Rovers & Associates Geoffrey Reeder - Union Pacific Railroad</p>
2:10		<p>Auditing of Remediation Project Sites, a Proactive Approach Paul Kurzanski - CSX Transportation, Inc Mike Feamster - ENVIRON International, Corp.</p>
2:30	BREAK - Illini Union Room B	
	<p>Environmental Information Management System Moderators: Riaz Ahmed - TRC Joanne Maxwell - Amtrak</p>	<p>Compliance Moderators: Russ McDaniel - Norfolk Southern</p>
2:50	<p>Environmental, Energy, Emissions, and Compliance Management in the Cloud Neno Duplan - Locus Technologies</p>	<p>Environmental Permitting for Siding Construction: Challenges, Obstacles, and Success Brian Schaffer - AECOM</p>
3:10	<p>Thinking Beyond Spreadsheets for Railroad Environmental Compliance Kevin Koning - AECOM</p>	<p>Iowa Interstate Railroad, Homestead, Iowa - From Cornfield to Locomotive Shop Tom Klemm - Iowa Interstate Railroad Dave A. Diem and Liz A. Ardell - Kennedy/Jenks Consultants</p>
3:30	<p>Three Dimensional Visualization Improves Site Conceptual Models Marc Sanford and Robbi McKinney - ARCADIS William Parry - CSX Transportation, Inc.</p>	<p>I Have All My Permits...What Do You Mean That I Am Out of Compliance? Lucien Tender and Troy Neisz - AMEC Environment & Infrastructure, Inc.</p>
3:50	<p>Amtrak's GHG Inventory Management Process: Software Development Chad Cliburn - ENKON Information Systems Celia Ann Pfleckl - Amtrak</p>	<p>Streamlining Federal Historic Preservation Laws for Rail Related Properties Richard Starzak and David Bauer - ICF International Colleen Vaughn - Federal Railroad Administration</p>
4:10	<p>Leveraging Geospatial Web Portals for Emergency Response, Infrastructure Protection, Hazmat Tracking, Enterprise Data Sharing, Asset Management, and Situational Awareness Jonathan Pollack - GeoDecisions</p>	<p>Railroad Stormwater Permits: All 46 Industrial Stormwater Permits are NOT Created Equal Dan Schultz and Melissa Godlewski - Kennedy/Jenks Consultants Michael Stanfill - BNSF Railway Company</p>
4:30	Poster Presentation Reception - Illini Union South Lounge	
6:45	<p>AREMA COMMITTEE 13 BANQUET*- Illini Union Ballroom - 2nd Floor Chester Culley, General Director - Environmental Quality - Kansas City Southern Railroad (ticket required)</p>	

Spoken Presentations - Wednesday 17 October - Morning

	Illini Union - Room A	Illini Union - Room 210
	Environmental Response Moderators: Oscar Sorensen - CH2M Hill	Natural Resources Moderators: Betsy Beauchamp - TestAmerica
8:00	A Blueprint for Coordinated Emergency Response and Expedited Site Closure - CSXT Westville Indiana Derailment Paul Kurzanski - CSX Transportation, Inc. Kevin Peterburs, Michele Gurgas, Coley Campbell - ARCADIS	Environmental Compliance during Derailment and Natural Disaster Response Debra Schafer - Union Pacific Railroad Elizabeth Herbst - CDM Smith
8:20	Proactive Incident Response at Niagara Lubricants Facility in Buffalo, NY Results in Reduced Adverse Environmental Impact and Cleanup Costs Ben Girard - ARCADIS William Parry - CSX Transportation, Inc.	Finding Mitigation Opportunities for Emergency Bank Repairs Performed on the Yellowstone River. Katie Walter - Shannon & Wilson
8:40	Enhanced Aerobic Bioremediation - A Streamlined Approach to Achieving Closure for a Lysine Release Incident Kevin Peterburs, Martina Schlauch Jones, and Mark Klemmer - ARCADIS Geoffrey Reeder - Union Pacific Railroad	Monitoring Effects of Train Traffic on Wildlife and Plants Ed Heske, Chris Whelan, Yong Cao, Dave Enstrom, and Jeff Levensgood - Illinois Natural History Survey
9:00	Demystifying Air Monitoring Strategies for Railroad Environmental Projects Dyron Hamlin and Andrzej Pawlisz - Conestoga-Rovers & Associates	Assessing Vulnerability of Nesting Songbirds Along the Elgin Joliet and Eastern Rail Corridor Christopher Whelen - Illinois Natural History Survey Manette Sandor - University of Connecticut Allison Barner - Oregon State University
9:20	Environmental Response and Restoration of the CSXT Morristown Derailment Site Jamie Krejsa - EnviroScience, Inc. Paul Kurzanski, Harry Hopes and Bill Baker - CSX Transportation, Inc.	A Collaborated Effort to Obtain USACE Permits in Challenging Permitting Environment Jon Sawyer and Kevin Peterburs - ARCADIS Deb Schafer - Union Pacific Railroad Jim Pinkerton - Alton&Southern Railway
9:40	BREAK - Illini Union Room B	
	Remediation Moderators: Stella Karnis - CN Martina Schlauch Jones - ARCADIS	Sustainability Moderator: Hadley Stamm - ARCADIS
10:00	Electrical Resistivity Imaging: Lessons for Effective Rail Yard Site Characterization Todd Halihan - Oklahoma State University Stuart McDonald - Aestus, LLC Jim Diel - Union Pacific Railroad Company	Sustainability and Environmental Operations: An "In-Practice" Case Study Lauren Alkidas and Denis Balcer - ARCADIS Paul Kurzanski - CSX Transportation, Inc.
10:20	Data Management Tools to Support Rapid Site Characterization Ben Verburg, Becky Forbort and Matt Gress - ARCADIS Brian Hayden - CN	Growing a Sustainability Program at Amtrak Celia Ann Pfeckl and Joanne Maxwell - Amtrak
10:40	Vapor Intrusion at Railroad Properties: Investigation, Evaluation and Recent Regulatory Developments Nadine Weinberg, Mitch Wacksman and Emily Christy - ARCADIS Raghu Chatrathi - CSX Transportation, Inc.	"Green Plan" for Residual Project Construction Materials Cynthia Capell and Denis Balcer - ARCADIS Paul Kurzanski - CSX Transportation, Inc.
11:00	Novel Educational Outreach Program on the Emerging Issue of Ethanol-based Biofuels Denice Nelson and Martina Schlauch Jones - ARCADIS Stella Karnis - CN	Sustainable Rail in Scotland Lorraine Young - Network Rail
11:20	Application of Natural Attenuation Data and Ternary Diagrams for Site Closure Stewart Emhof - ERM Matt Graham - BNSF	
11:40	Lunch - Illini Union Room 314 KEYNOTE SPEECH: Colin Harris Business Development Manager, North America - Carbon Disclosure Project "Carbon Disclosure Project: Growth, Reach and Impact"	

Spoken Presentations - Wednesday 17 October - Afternoon

	Illini Room A	Illini Union - Room 210
	<p>Remediation con't Moderators: Stella Karnis - CN Martina Schlauch Jones - ARCADIS</p>	<p>Energy, Emissions and Air Quality Moderators: Ken Richardson - ARCADIS Ryan Mills - BNSF</p>
1:20	<p>Legacy Property Environmental Closures are No Day at the Circus Bryant J. Griggs - ARCADIS Paul J. Kurzanski - CSX Transportation, Inc.</p>	<p>Diesel Exhaust Fluid Dosing Solutions for Large Engines Ulrich Pfahl and Markus Downey - Emitec Inc.</p>
1:40	<p>Passive Adsorptive Barrier Remedy Selection and Design to Replace Active Surface Water Treatment at a Groundwater Seepage Area Jeff Gentry, Rob Healy, and Bertisabel Custer - CH2M HILL Jim Diel - Union Pacific Railroad</p>	<p>Air Quality Modelling for Railway Projects Mike Lepage and Mike Kennedy - RWDI AIR Inc.</p>
2:00	<p>Combining Focused Soil Excavation with BOS 200® Application to Expedite Site Closure at an Indiana Rail Yard Paul Kurzanski - CSX Transportation, Inc. Todd McFarland - AMEC Environment & Infrastructure, Inc. Gary Simpson - AST Environmental</p>	<p>Diesel Particulate Matter Regulation and Health Impacts Gary Rubenstein and Eric G. Walther - Sierra Research</p>
2:20	<p>Innovative & Sustainable Approach to Barrier Wall Installation at an Active Rail Yard Francisco Perello, Richard Johns and Jesse Berton - Keystone Environmental Ltd David Brogliatto - CN</p>	<p>Developing a Greenhouse Gas Emission Inventory for Inclusion in the Carbon Disclosure Project (CDP) Submittal Meaghan Atkinson - CSX Transportation, Inc. Kenneth W. Richardson, Jr. - ARCADIS</p>
2:40	<p>Chlorinated Solvent Remediation Via Emulsified Vegetable Oil (EVO): How Much and How Often? Dawn Gabardi, Matthew Schnobrich and Denice Nelson - ARCADIS LeeAnn Thomas - Canadian Pacific</p>	<p>Technology R&D Opportunities for Reducing Rail Sector Emissions Ray Barton - National Research Council of Canada - Surface Transportation</p>
3:00	BREAK - Illini Union Room B	
	<p>Remediation con't Moderators: Jay Martin - AMEC Chuck Cline - Marshall Miller</p>	<p>Stormwater and Wastewater Moderators: Melissa Godlewski - Kennedy/Jenks Steve McNaughton - Union Pacific</p>
3:15	<p>DNAPL Source Zone Characterization - Maximizing Return-on-Investigation Fred Payne, Kelly Houston, Erik Gaiser and Kristen Stevens Jim Diel and Jim Levy - Union Pacific Railroad</p>	<p>Union Pacific Railroad, Cheyenne Railyard Industrial Wastewater and Stormwater System Improvements – Part 1 Oscar E. Sorensen III - CH2M HILL Mark E. Ross - Union Pacific Railroad</p>
3:35	<p>Carbon Dioxide Traps Used to Measure LNAPL Loss Rebecca Rewey - CH2M HILL</p>	<p>End of the Pipe: Managing Regulatory Perception of Stormwater Outfall Herb Colby and Sam Farnsworth - AMEC Environment & Infrastructure William Parry - CSX Transportation, Inc.</p>
3:55	<p>Using Principals of Environmental Sequence Stratigraphy (ESS) to Develop Detailed NAPL Conceptual Models for Calculating LNAPL Transmissivity Rick Cramer, Mike Shultz and Trevre Andrews - AECOM</p>	<p>Low Impact Development Stormwater BMPs at Framingham Yard Daniel Lee, Kathryn Edwards, Irina Calante and Rick Adams - ARCADIS William Parry - CSX Transportation, Inc.</p>
4:15	<p>Changing the Paradigm of Legacy Rail Yards with Residual LNAPL Rick Adams, Brad Koons, Purvee Shah, and Steven Gaito - ARCADIS Stella Karnis and Curtis Bartz - CN</p>	<p>Minimizing Spill and Contaminant Release from Storm Water Infrastructure through a Comprehensive Investigation Approach Ryan Shepherd, Terry Gayman and Dilan Singaraja - Conestoga-Rovers & Associates André Pelletier - CN</p>
4:35	<p>A CSI Approach to NFA: NAPL Forensics & Historic Data Provides Multiple Lines of Evidence for NFA Sean Gormley and Thomas Hensel - AMEC Environment & Infrastructure, Inc. Bill Parry - CSX Transportation, Inc. Neil Ferrone - Conrail</p>	<p>Stormwater Source Control Implementation Mark Leece - CH2M HILL Gary Honeyman and Traci Rohde - Union Pacific Railroad</p>
4:55	<p>Suspending Periodic LNAPL Recovery to Improve Conceptual Model Understanding Trevre Andrews and Matthew Zenker - AECOM Russell McDaniel - Norfolk Southern</p>	<p>CSX Transportation Corbin, KY – Industrial Wastewater Recycling Facility Chris Butler, Luke Williams, and Sue Johnson AMEC Environment & Infrastructure John Calhoun and Kim Farris - CSX Transportation, Inc.</p>
5:15	Adjourn	

Compliance and Permitting

Environmental Impact Avoidance and Permit Compliance

Christine Roberts - CH2M HILL
Debra L. Schafer - Union Pacific Railroad

What Do You Mean It's Historic? Permitting Challenges to Fast Track a Historic Bridge Replacement

Lance Rasnake and Troy Neisz - AMEC Environment & Infrastructure, Inc.
Matt L. Adkins - CSX Transportation, Inc.

The Hojack Swing Bridge: Navigating the Removal and Understanding the Costs of the Trip

Marie Dowd and Tricia Foster - AMEC Environment & Infrastructure, Inc.
William Parry - CSX Transportation, Inc.

The New Jersey Site Remediation Reform Act and the Licensed Site Remediation Professional Program: Expedited Site Closure?

Stephen E. Posten - AMEC Environment & Infrastructure, Inc.
Bill Parry - CSX Transportation, Inc.
Neil Ferrone - Consolidated Rail Corporation (Conrail)

Energy, Emissions, and Air Quality

Increasing of Rolling Stock Ecological Compatibility on Basis of Engines Work Process Improvement

Otari Gelashvili - Georgian Technical University

Environmental Information Management Systems

How Accurate and Precise Are Your Analytical Results?

Ruth Forman and Rock J. Vitale - Environmental Standards, Inc.
Robert Strong and Stella Karnis - CN

Environmental Response

A Practical Approach to the Investigation of Subsurface Conditions Following a Diesel Release on a High Traffic Rail Corridor

Sherry Eaton and Marios Avgousti - Golder Associates Ltd.
Alex Borges - CN

Remediation Without Devastation

James "Jeb" Barrett, James "Bubba" Bryan, and John "Rusty" Sewell - Marion Environmental, Inc.

Fate and Transport of Ethanol in the Environment

James Holland - Pinnacle Engineering, Inc.

Achieving Quick Kloczur: A Case Study

Jeffrey LaRock - AMEC Environment & Infrastructure, Inc.
William Parry - CSX Transportation, Inc.

Natural Resource Management

Forever Sustainable: Enhancing the Forever Wild Protection of the Adirondack Park

Paul Yonge - Iroquois Western, LLC

Pollution Prevention

High Performance Biodegradable Hydraulic Fluids in Railroad MOW Equipment

Michael Kasbek - Terresolve Technologies

Cathodic Protection for DFO Storage Tanks and Buried Piping

Louis Koszewski - US Tank Protectors, Inc

Remediation

LNAPL Volume Estimation and Recovery Modeling - Proceed with Caution!

Matthew Rousseau and David Cushman - Conestoga-Rovers & Associates
Geoffrey Reeder - Union Pacific Railroad

Overcoming Site Challenges to Optimize an Inactive LNAPL recover System on an Active Commuter Rail

Frank Ricciardi, George Naslas, and Ken Biscoglio - Weston & Sampson Engineers, Inc.

Free Product and Ballast Sheen Spawns a New Assessment Approach

Chuck Cline - Marshall Miller & Associates
David Patten - Norfolk Southern Corporation

Multidiscipline Approach and Best Practices for Third Party Pipeline Construction through Environmental Impacts at a Rail Yard in New Jersey

Jeffrey Seier and John Messinger - ARCADIS
William Parry - CSX Transportation Inc.

Risk and Liability Management

Water Well Management and Groundwater Sustainability

Peter Lacko - Gannett Fleming
Rick Nath - CSX Transportation, Inc.

Responsible Management of Environmentally Benign, High Hazard Railroad Legacy Sites

Duane Graves - Geosyntec Consultants
Paul Kurzanski - CSX Transportation, Inc.

Value of Non-Technical Forensic Evaluation to Avoid Field Investigation Activities in Rochester, NY

Jeffrey Bonsteel - ARCADIS
William Parry - CSX Transportation, Inc.

Stormwater and Wastewater

Management of Coal Fines Emphasizing Site Realities

David Drew and Brian Kardos - Gannett Fleming
John Calhoun - CSX Transportation, Inc.

If it Smells Like Sewage and Looks Like Sewage, it Must Be Sewage, Right?

Erin Busby and Sean Gormley - AMEC Environment & Infrastructure, Inc.
Michael Casadonte and Paul Kurzanski - CSX Transportation, Inc.

GoldSET – An Innovative Wastewater Treatment Decision Support Tool

Stéphanie Dumais, Robert Noël-de-Tilly, François Beaudoin and Éric Bergeron - Golder Associates
Erika Akkerman - CN
Catherine Mulligan - Concordia University

Stormwater Survival Guide: Preparation Strategies for Stormwater Regulations in Flux

Bryan Rogne - AECOM

Culvert Replacement: Using an Old Method with Planning, Design and Permitting Techniques to Keep Trains Safe and Moving

Troy Neisz and Lance Rasnake - AMEC Environment & Infrastructure, Inc.
Paul J. Kurzanski - CSX Transportation, Inc.

Sustainability

Impacts of Oil Price on Freight Transportation Modal Choice and Emissions

Taesung Hwang, Yanfeng Ouyang, Christopher Barkan - University of Illinois at Urbana-Champaign

Emergency Information



Dial **911** for assistance or **9-911** from a campus phone. The conference location is: Illini Union, 1401 W. Green St, Urbana, IL



Tornado: Use the stairs on the north or south side of the building to go to the basement to seek shelter.



Fire: Use the doors located on the west side of the building and meet on the southeast side of Altgeld Hall.

POLICE

Champaign Police Department (Non-emergency)

82 East University Ave, Champaign IL
217- 351-4545



Carle Foundation Hospital

611 West Park Street, Urbana IL
217- 383-3311

RREC Bus Schedule

*Between Hawthorn Suites, Hilton Garden Inn, iHotel,
Hampton Inn, Holiday Inn, and Illini Union*

Tuesday

October 16th, 2012

7:00-9:00 am*

9:00-3:00 pm**

3:00-7:00 pm*

Departing after the banquet

Wednesday

October 17th, 2012

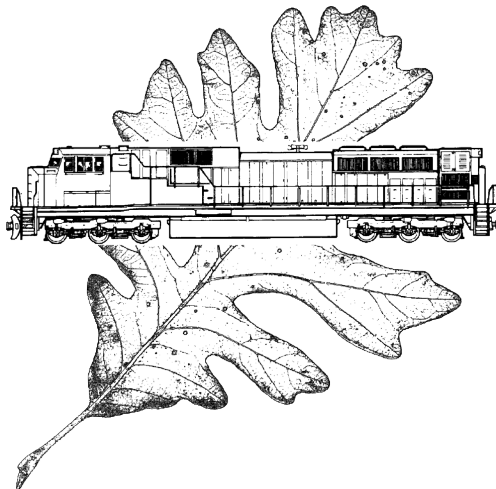
7:00-9:00 am*

9:00-3:00 pm**

3:00- 5:30 pm*

* = running continuously between hotels and Illini Union

** = running on reduced schedule. Call registration desk (217-244-1340) for pick-up



Champaign/Urbana Recommended Restaurant List

(all directions from Illini Union facing north)

Alexanders Steakhouse

202 W. Anthony Dr., Champaign, IL 61820
217-359-1789

Take Green St. West to Neil St. Turn right.
Vear right on Walnut St.
Turn left on E. Washington St.
Turn right on Neil St.
Turn left on Anthony Drive
On right hand side.

Bacaro - Italian (fine dining)

113 N Walnut St., Champaign, IL 61820-4009
217-398-6982

Take Green St. West to Neil St.
Turn right.
Bear right on Walnut St.
On left hand side.

Biaggi's Ristorante Italiano

2235 S Neil St., Champaign, IL 61820
217-356-4300

Take Green St. West to Neil St. Turn left.
About 2 miles down on right hand side

Black Dog Smoke & Ale House (casual bar)

201 N Broadway Ave., Urbana, IL 61801
217-344-9334

Green St. East to Lincoln Ave. Turn left.
Turn right on University Ave.
Turn right on Broadway Ave. On right hand side

Destihl (Gastrobrewpub)

301 N. Neil St, Champaign, IL 61820
217-356-0301

Take Green St. West to Neil St. Turn left.
About 2 miles down on left hand side

Escobar - Native Latino

6 E Columbia Ave., Champaign, IL 61820
217-352-7467

Take Green St. West to Neil St. Turn right.
Bear right on Walnut St.
Turn left on Columbia
On right hand side.

Great Impasta - Italian

156 Lincoln Sq # D, Urbana, IL 61801
217-359-7377

Green St. East to Busey Ave. Turn left.
Turn right on W, Elm St.
Turn right on S. Broadway Ave.
Turn left at Lincoln Square
On right hand side

The Big Grove Tavern - Midwestern Craft Cuisine

1 E. Main St, Champaign, IL 61820
217-239-3505

Take Green St. West to Neil St.
Turn right.
Bear right on Walnut St.
Turn left on Main St.
On right hand side.

Kofusion - Asian (Sushi)

1 E Main St # 104, Champaign, IL 61820
217-531-1166

Take Green St. West to Neil St. Turn right.
Bear right on Walnut St.
Turn left on E. Main St.
On right hand side

Radio Maria - Cajun/Spanish

119 N Walnut St., Champaign, IL 61820
217-398-7729

Take Green St. West to Neil St.
Turn right.
Vear right on Walnut St.
On left hand side.

Silvercreek - Casual fine dining

402 N Race St., Urbana, IL 61801
217-328-3402

Take Green St. East to Lincoln. Turn left
Turn right on W. University Ave.
Turn right on N. Race St.
On left hand side

Public Parking

P Please use the shuttle busses that are provided. Parking on campus is *extremely* limited.

Meters are available on South Mathews Avenue. Please note there is a two hour time restriction. There is a parking lot east of Legends (located on the corner of Sixth and Green St.) with metered parking. Inquire at registration desk for more information.

Useful Locations

Kinkos

613 South Wright St.
Champaign, IL 61820
217-344-2085

Expresso Royale Cafe

Illini Union Courtyard Cafe
217-333-7106

Starbucks

503 E Green St.
Champaign, IL 61820
217-344-8613

Illini Union Bookstore

809 South Wright St.
Champaign, IL 61820
217-333-2050

Walgreens

407 East Green St.
Champaign, IL 61820
217-344-0121

Cocomero (frozen yogurt)

709 South Wright St.
Champaign, IL 61820
217-328-3888

Folletts Bookstore

627 South Wright St.
Champaign, IL 61820
217-356-1368

T.I.S. Bookstore

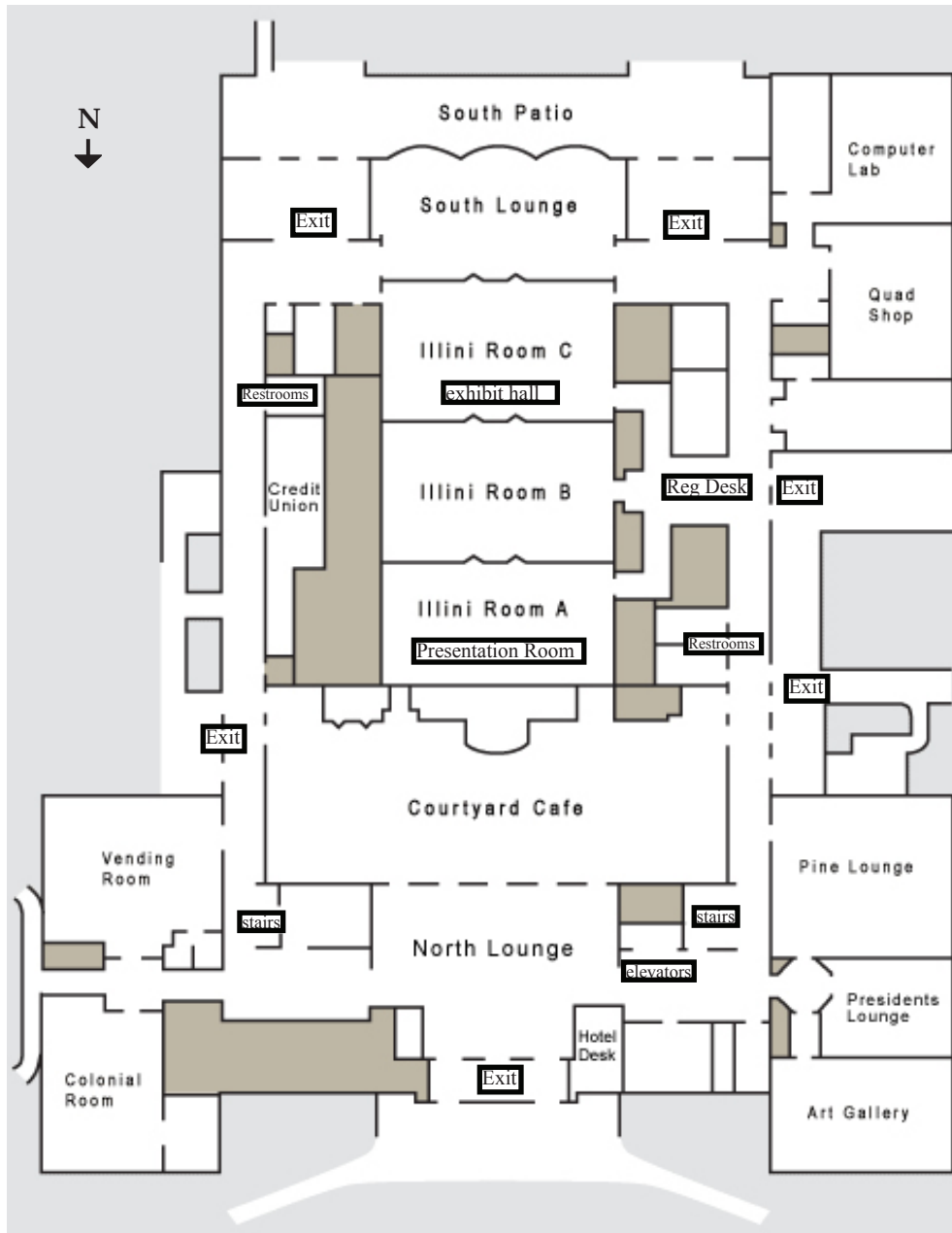
707 South Sixth St.
Champaign, IL 61820
217-337-4900

Wireless Internet

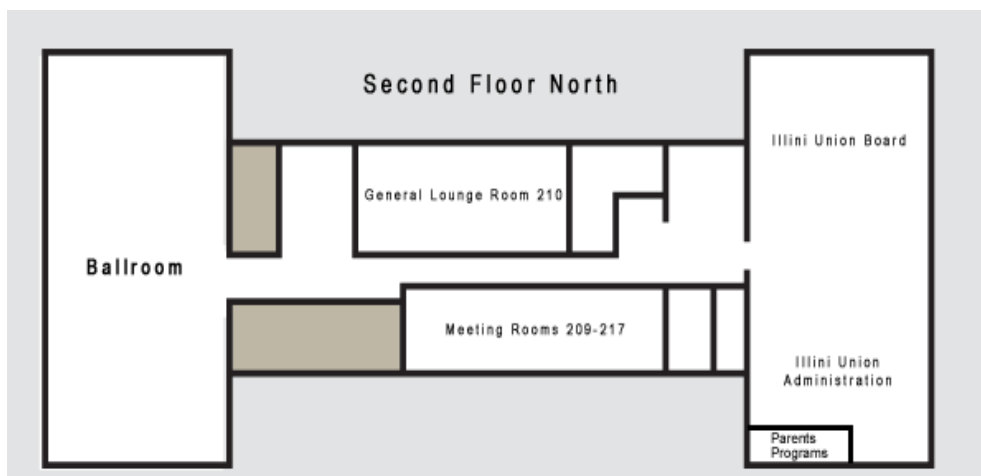


- Choose the "UIpublicWiFi" wireless network
- Open a web browser and go to a web site
- Fill out registration form. The University is legally required to collect information from you to provide you with network access.
- When you open a web browser and enter a web site such as www.illinois.edu (external link), your web browser will be redirected to the UI Public Wireless authentication site, where you are asked to agree to the Terms of Use.
- UI Public Wireless users can contact wireless-related technical support at 217-333-9100.

Illini Union Main Floor

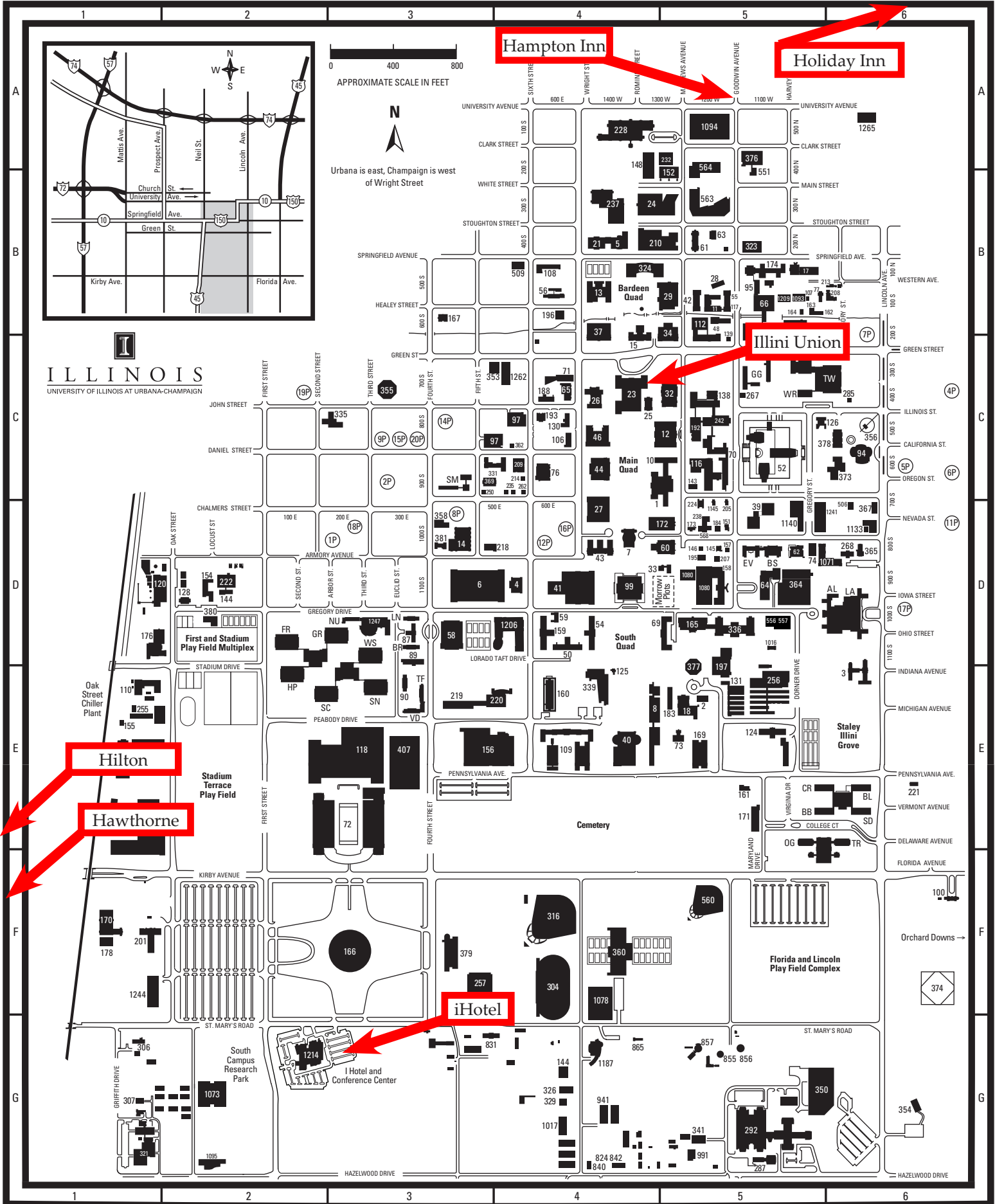


Illini Union Second Floor



Ballroom - Please take north elevator or staircase to 2nd floor.
 Room 210 - Please take north elevator or staircase to 2nd floor.

University of Illinois - Campus Map



Exhibitors

Accutest Laboratories	Environ International Corporation	Oil Skimmers, Inc.
AECOM	Environmental Restoration LLC	Pace Analytical Services
AMEC Environment & Infrastructure	EnviroScience, Inc.	Pinnacle Engineering, Inc.
ARCADIS US, Inc.	Eurofins Lancaster Laboratories	Polystar, Inc
BELFOR Environmental	FMC Environmental Solutions	Shaw Environmental & Infrastructure, Inc.
Boart Longyear	Gannett Fleming, Inc.	SpillX, LLC
Century Group, Inc.	GEI Consultants, Inc.	StormwaterRx, LLC
CETCO	Geo-Cleanse International, Inc.	Summit Environmental Services, Inc.
CH2M Hill	Geosyntec Consultants	SUNPRO
Clean Harbors Environmental Services	Golder Associates	SWS Environmental Services
Coleman Industrial Construction Inc.	HDR Engineering, Inc.	TestAmerica
Conestoga-Rovers & Associates	Hulcher Services, Inc.	TetraTech
CTEH	ICF International	URS Corporation
EMR, Inc.	JRW Bioremediation	Waste Management
Envirocon, Inc.	Marion Environmental, Inc.	
	Marshall Miller & Associates	

Planning Committee

Riaz Ahmed - TRC	Steve McNaughton – Union Pacific
Chris Barkan – University of Illinois	Lance Meister – Cross Spectrum
Betsy Beauchamp – TestAmerica	Gregg Menniti - Geosyntec
Chuck Cline – Marshall Miller	Ryan Mills – BNSF
Jay Diebold - Golder	Glenn Millner – CTEH
Sam Farnsworth – AMEC	Rick Nath – CSX
Robert Fronczak – Association of American Railroads	Bernie Noonan – EMR
Don Girard – BNSF	Chris Oakes – Norfolk Southern
Melissa Godlewski – Kennedy Jenks	Geoff Reeder – Union Pacific
Suzan Gonder – Environmental Works	Ken Richardson – ARCADIS
Martina Schlauch Jones – ARCADIS	Ken Rose – OmniTRAX
Stella Karnis – Canadian National	Gary Rozmus – Gannett Fleming
Scott Keating – GEI Consultants, Inc.	Kim Schlichting – University of Illinois
Kevin Keller – HDR	Lanny Schmid – Union Pacific
Jay Martin – AMEC	Oscar Sorensen – CH2M Hill
Joanne Maxwell – Amtrak	Hadley Stamm - ARCADIS
Russ McDaniel – Norfolk Southern	Leo Thorbecke – AECOM
Ken McHale - Metro-North Railroad	John Williams – Pace Analytical

Conference Organizing Team

Chris Barkan	LB Frye	Angela Stanford
Abby Batis	Nicole Ladehoff	Kelcey Willmot
Jerri Lyn Beck	Ryan Lippman	
Rachel Cote	Kim Schlichting	

Useful Contact Information

RREC 2012 Registration Desk	217-244-1340	iHotel	217-819-5000
Hampton Inn	217-337-1100	Illini Union Guest Rooms	217-333-3030
Hawthorn Suites	217-398-3400	Yellow Cab	217-355-3553
Hilton Garden Inn	217-352-9970	U of I Golf Courses	217-359-5613
Holiday Inn	217-328-7900	Stone Creek Golf Club	217-384-6690

