

LIVABLE AND RESILIENT COMMUNITIES INITIATIVE

LEVERAGING TRANSIT LINES AND
PROPERTIES FOR COMMUNITY
REVITALIZATION



PATERSON, N. J.
 1880
17 Miles from New York on the N.Y. & W. Ry.

PACKARD & BUTLER LITH. PHILADELPHIA

28x33



Photo Credit: Packard and Butler, 1880



Photo Credit: Dan Clement, 1983



01222

Photo Credit: Detroit Publishing Company, 1901



Photo Credit: Detroit Publishing Company, 1906



Photo Credit: Harris & Ewing, Inc., 1933



Photo Credit: Monica E. Hawley, 1983a



Photo Credit: Monica E. Hawley, 1983b



Photo Credit: Haines Photo Co., 1913



DISCOVER
FITCHBURG
VHS
COMMUNITY INC.

ONE WAY



Clairette AGENCY
INSURANCE AND TAX SERVICES
REGARDA DE CELULARES NOTARY PUBLIC - MONEY ORDERS - ENVIO DE DINERO 973-782-6052

INCOME TAX OPEN
EMERGENCY
AND PARKING
Preparation de Documentos
Traducción de los
Envío de Dinero
Notario Publico
Tax Prepared
Notary Public
Money Transfers



7-2
HAPPY
BIRTHDAY
WANTO

El Especialito
RIGGO



EXPRESS TIRE SHOP

EXPRESS TIRE SHOP



PATERSON PAPERS

 PATERSON PAPERS
DISTRIBUTORS OF FINE PAPERS SINCE 1848

16th Ave

16th Ave
MADISON AVE

Paper Store
OPEN TO THE PUBLIC
Professional Stationery & Office Products
Wholesale & Retail
973-278-9181

BLIZZARD P.
722



Madison Avenue Commuter Rail Corridor Study, 2009

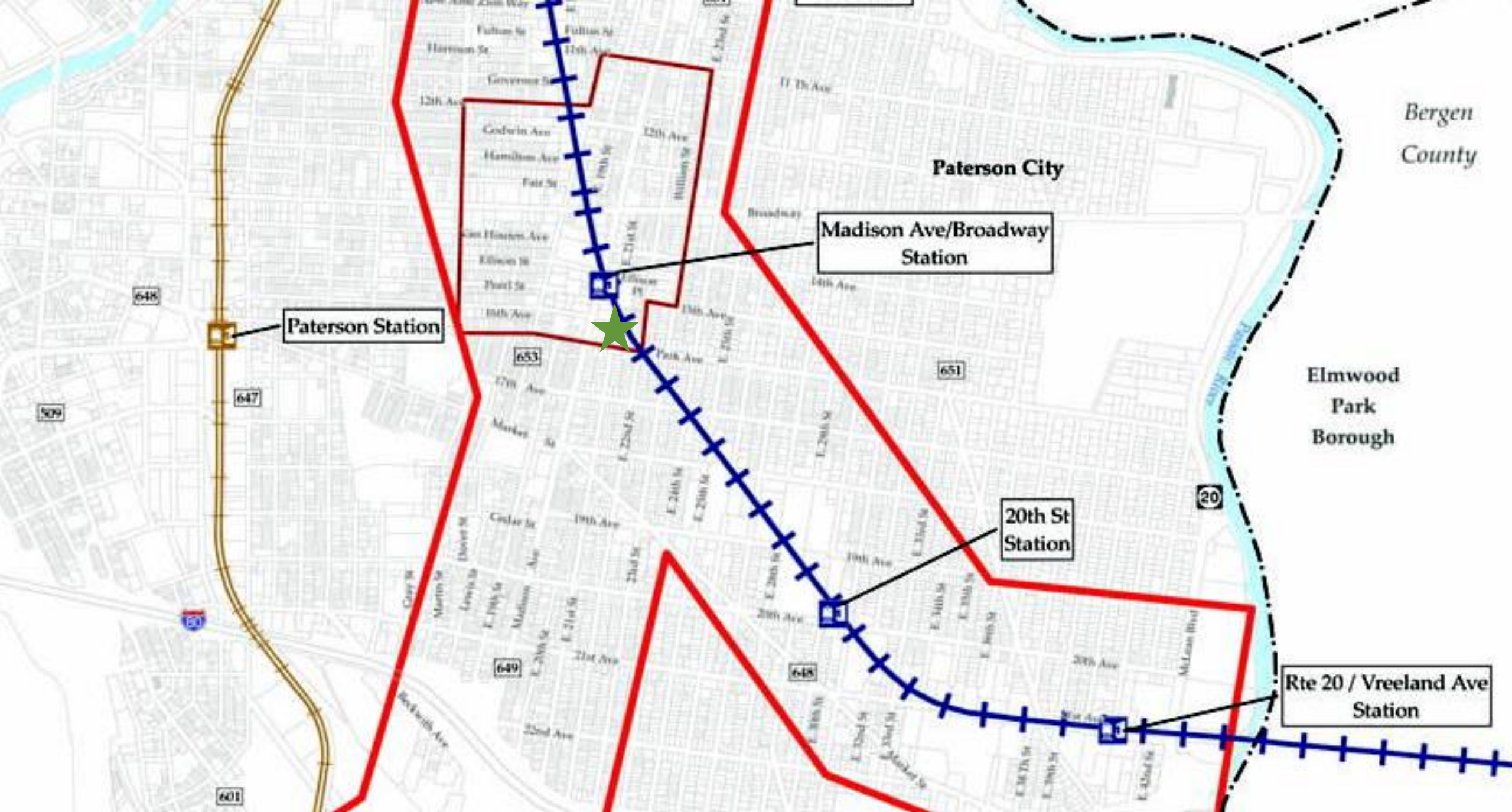
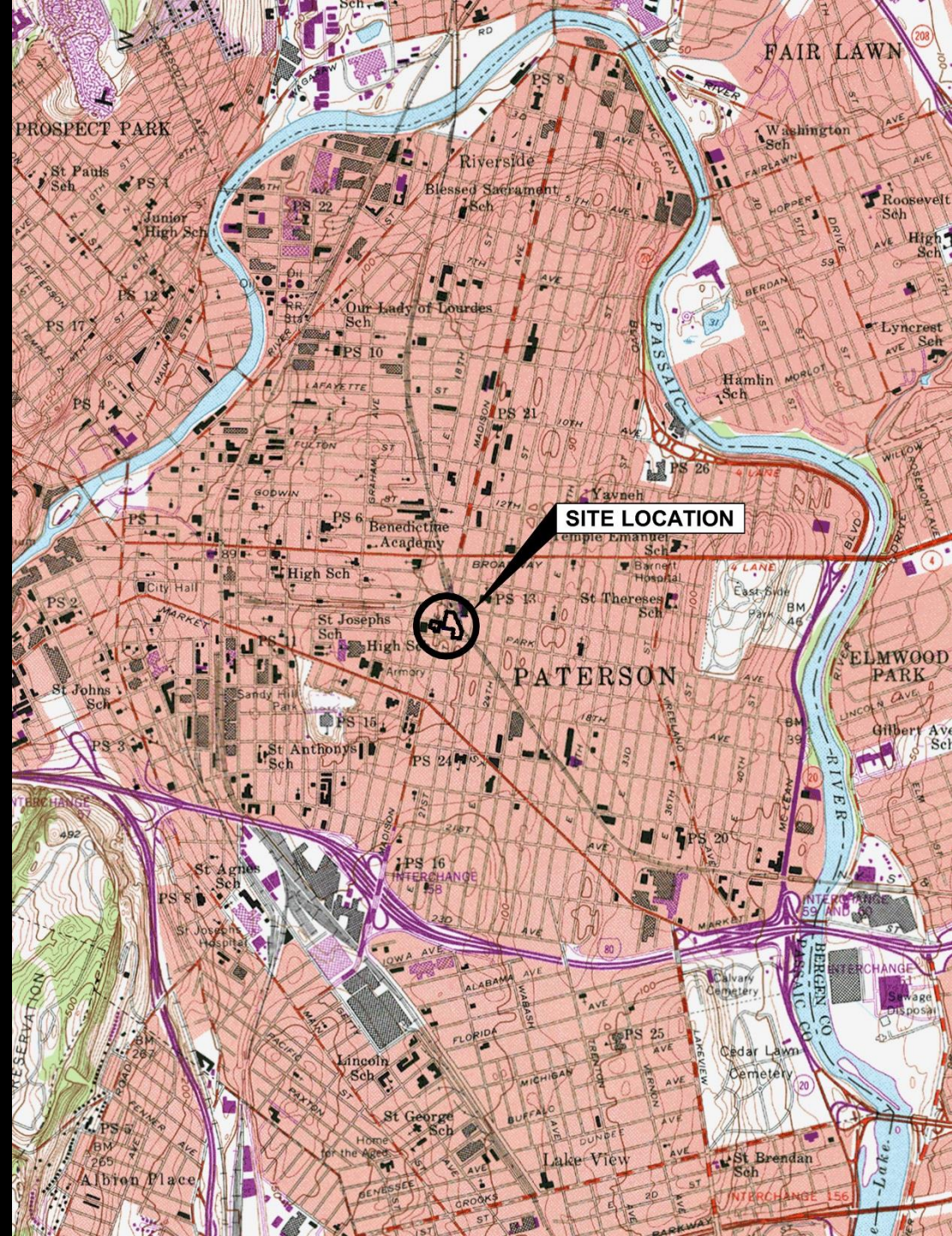


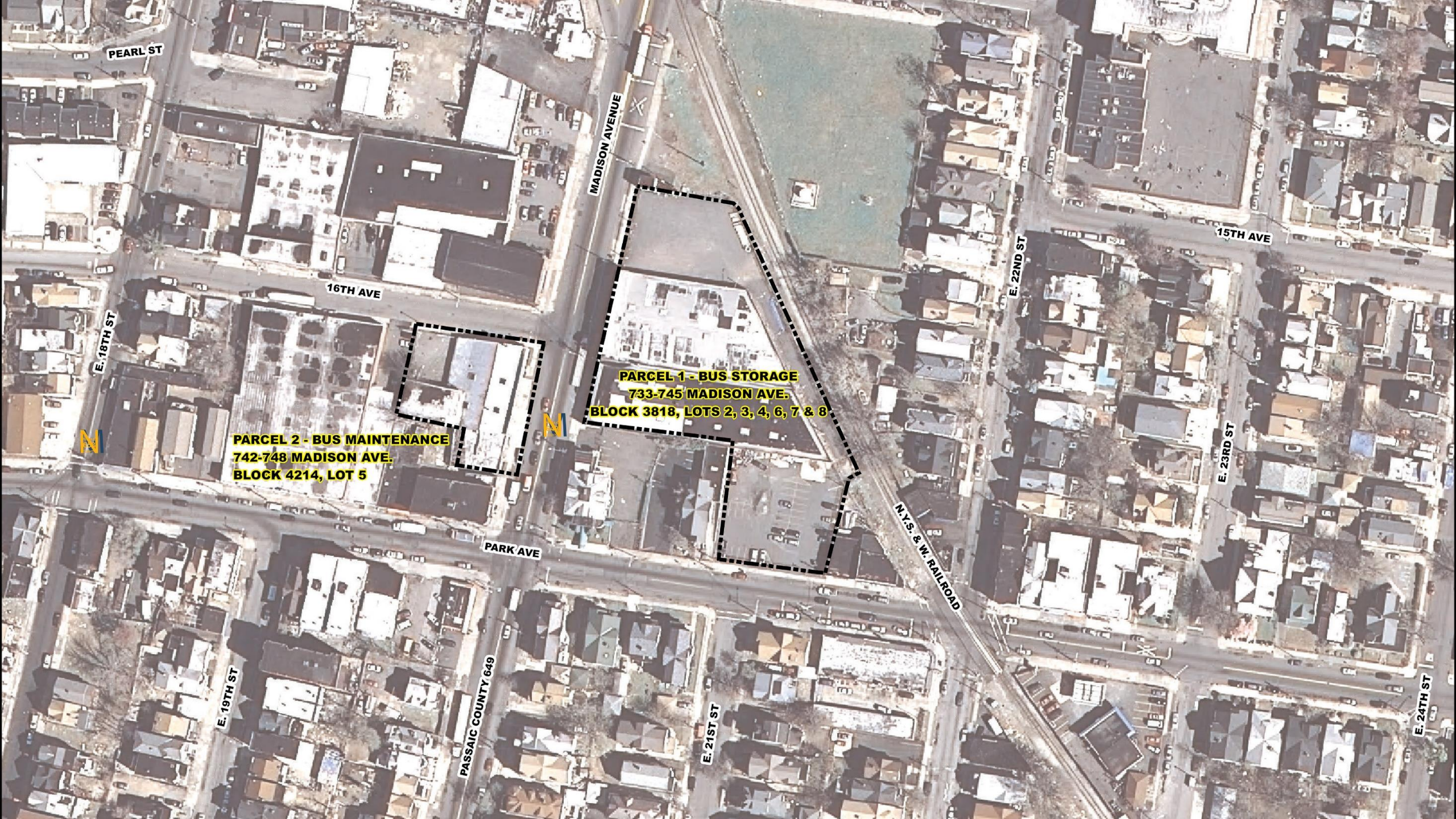
Photo Credit: Madison Avenue Commuter Rail Corridor Study, 2009



Photo Credit: Madison Avenue Commuter Rail Corridor Study, 2009







PARCEL 1 - BUS STORAGE
733-745 MADISON AVE.
BLOCK 3818, LOTS 2, 3, 4, 6, 7 & 8

PARCEL 2 - BUS MAINTENANCE
742-748 MADISON AVE.
BLOCK 4214, LOT 5

PEARL ST

MADISON AVENUE

16TH AVE

E. 16TH ST

E. 19TH ST

PASSAIC COUNTY 649

PARK AVE

E. 21ST ST

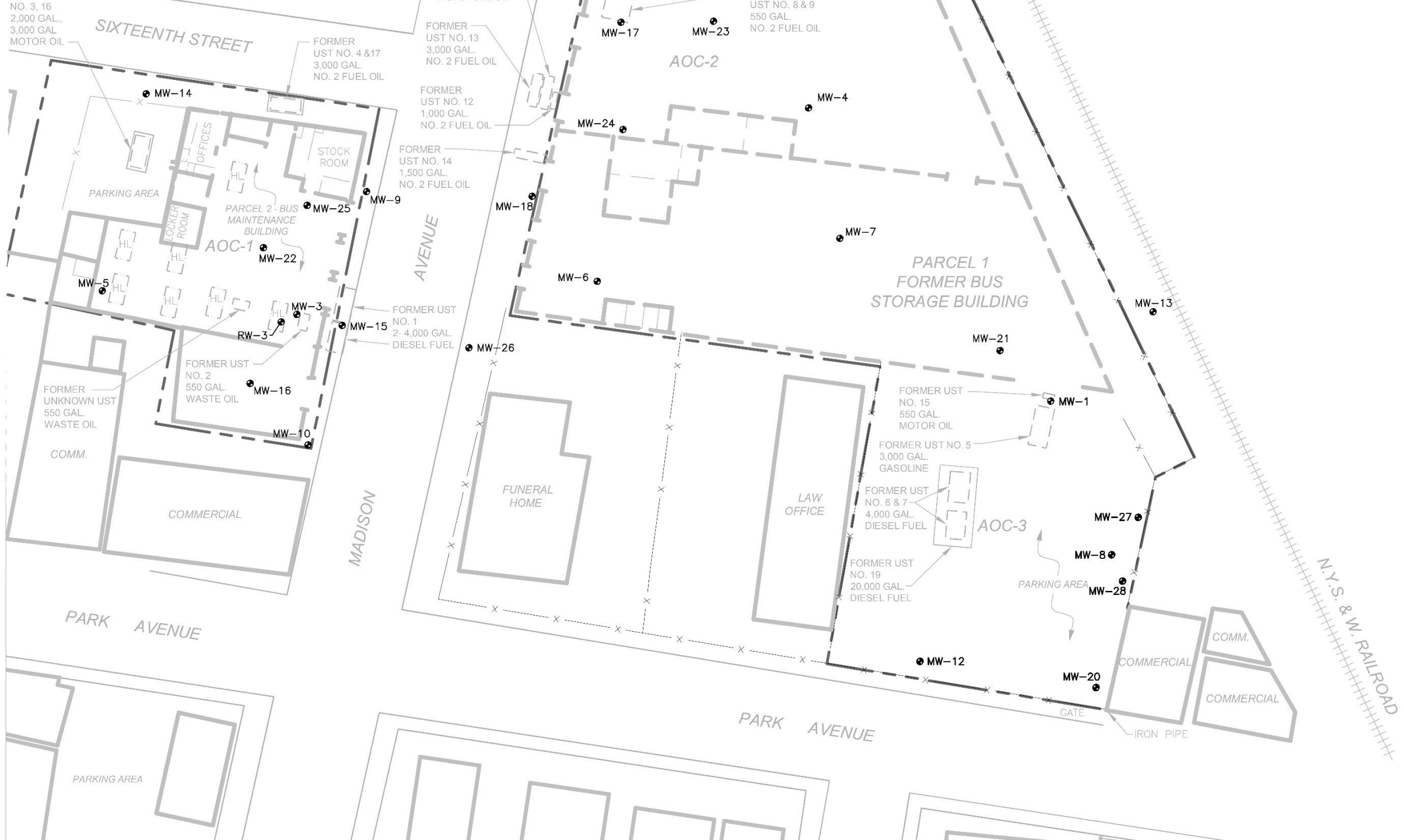
N.Y.S. & W. RAILROAD

E. 22ND ST

15TH AVE

E. 23RD ST

E. 24TH ST











Three pieces of blue graffiti are visible on the white garage door of the main building. The graffiti consists of stylized, bubbly letters and symbols.







DEERE

FUSELLA GROUP

K-275H

WORK



Photo Credit: Madison Avenue Commuter Rail Corridor Study, 2009



Ileana S. Ivanciu PhD, PG

Vice President, Environmental Services
973.576.0150 | iivanciu@dewberry.com

Dewberry

www.dewberry.com

Works Cited

Brogan Cadillac of Totowa

2014 Brogan since 1927: Brogan Cadillac Family Owned and Operated Since 9127. Available online at:<http://www.brogancadillac.com/BroganCadillacCommitmentServicingYourNeeds>

Brown & Keener, CMX, and Stump/Hasuman Partnership

2009 *Madison Avenue Commuter Rail Corridor Study, Final Plan*. Prepared for Passaic County Planning Department. Digital Copy available online through <http://www.passaiccountynj.org/index.aspx?nid=300>

Clement, Dan

1983 *Historic American Engineering Record, Morris Canal Warren, Sussex, Morris, Passaic, Essex, and Hudson Counties New Jersey (HAER NJ, 21-Phil, 1)*. Historic American Engineering Record, National Park Service, Department of the Interior, Washington, D.C.

Detroit Publishing Company

1901a *Paterson, NJ from Reservoir Park*. Detroit Publishing Company, Detroit, Michigan. Digital Copy available online through Library of Congress, www.loc.gov.

ca 1906 *Paterson, NJ from Water Works Park*. Detroit Publishing Company, Detroit, Michigan. Digital Copy available online through Library of Congress, www.loc.gov.

Haines Photo Co.

1913 Birdseye View of Patterson [sic], NJ. Library of Congress, Prints and Photographs Division, Washington, D.C.

Harris & Ewing, Inc.

c1933 Paterson Silk Strikers NTWU. Library of Congress, Prints and Photographs Division, Washington, D.C.

Hawley, Monica E.

1983a *Historic American Engineering Record, Great Falls/SUM Historic District, Vicinity of Passaic River below Great falls, Paterson, NJ, Passaic County (HAER NJ, 16-PAT, 15)*. Historic American Engineering Record, National Park Service, Department of the Interior, Washington, D.C.

1983b *Historic American Engineering Record, SUM Hydroelectric Plant, McBride Avenue, Paterson, NJ, Passaic County (HAER NJ, 16-PAT, 21)*. Historic American Engineering Record, National Park Service, Department of the Interior, Washington, D.C.

Packard and Butler

1880 Paterson, N.J. Packard & Butler Lithographers, Philadelphia, PA. Digital Copy available online through Library of Congress, www.loc.gov.