

# HOW TOMORROW MOVES



Imagine the result



# COLLABORATION FOR ENVIRONMENTAL REMEDiation IN ACTIVE RAIL AREAS

---

Paul J. Kurzanski – CSX Transportation, Inc.

Sandy M. Conard – ARCADIS U.S., Inc.

Janette D. Wilson – ARCADIS U.S., Inc.

Andrew T. McManus – ARCADIS U.S., Inc.

HOW TOMORROW MOVES



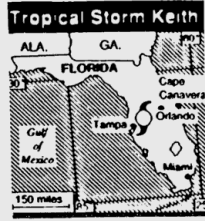
# SITE HISTORY

## Keith marches across Florida

By PAT LEISNER  
Associated Press Writer

TAMPA, Fla. — Tropical Storm Keith marched across Florida today and was expected to leave behind communities buffeted but generally unscathed by the late-season storm's downpours and 65-mph gusts.

Flooded streets, a few tornados and blackouts caused by downed tree limbs highlighted reports from Florida's west coast, where residents and tourists generally dismissed Keith as a nuisance, not a danger.



Fewer than a dozen were at a shelter in Venice in Sarasota County and the 99 residents of Shore Acres Nursing Home in St. Petersburg Beach were taken to two other nursing homes because of a danger of flooding.

All three causeways connecting St. Petersburg and Tampa were closed late Tuesday because of high winds.

On Tuesday, 85 multimillion-dollar P-16 jets were flown from MacDill Air Force Base to Dobbins Air Force Base at Marietta, Ga., to wait out the storm.

A 216-foot freighter, Percy

ship stalled when an air conditioner line broke and flooded the engine room.

Forecasters issued a tropical storm warning from Cape Sable to Cedar Key on the Gulf Coast, a distance of about 250 miles. The extended the warning late Tuesday to the Atlantic Coast from Jupiter Inlet, north of Palm Beach, to Savannah, Ga.

However, forecasters at the National Hurricane Center said a cold front from the north was mingling with Keith in the Gulf of Mexico, keeping it from gaining

## Effects of derailment in 1988 still being felt

Residents: Problems surfaced after wreck

By Tom Palmer  
The Ledger

LAKELAND — Howard Hunt says that life on Prine Road north of Lakeland was pretty nice up until the day before Thanksgiving in 1988, when a 184-car train derailed nearly in his backyard during a tropical storm.

The train crumpled like a soda can early that morning, spilling diesel fuel and fertilizer into the ditches around him. Since then, he and neighbors have suffered occasional eye irritation, chickens and rabbits have been born deformed and people have begun worrying their wells might be contaminated.

Hunt says that CSX Transportation hasn't cleaned up all of the fertilizer and diesel fuel. In addition, he says his property floods more often since railroad workers filled a drainage ditch behind them.

"It's been a problem, but I couldn't get anyone to listen to us," Hunt said, explaining attempts to contact local railroad officials have been unsuccessful.

CSX spokesman Lynn Johnson said the company just completed a month-long, \$100,000 cleanup that involved removing contaminated soil and replacing it with clean fill.

He said he had heard nothing about Hunt's complaints, adding people he talked to who are involved in the cleanup are "quite shocked" that there are any complaints.

"We put in new drainage ditches in there," he said.

State environmental regulators — who say they haven't been in contact with the railroad about the cleanup since 1990 — are looking into the problems.

Mary Yeargan, an environmental specialist in the Florida Department of Environmental Regulation's Tampa office, said Monday that the agency has asked CSX to submit additional information on its cleanup plans.

"We need to find out exactly what they have been doing," she said.

The 1988 derailment occurred when heavy rains from Tropical Storm Keith washed out



This 184-car train derailed north of Lakeland the day before Thanksgiving in 1988.

a section of track in a rural area off Kathleen Road.

That caused diesel fuel from one of the train's two engines and some of the 50 tons of fertilizer they were pulling to spill onto the ground.

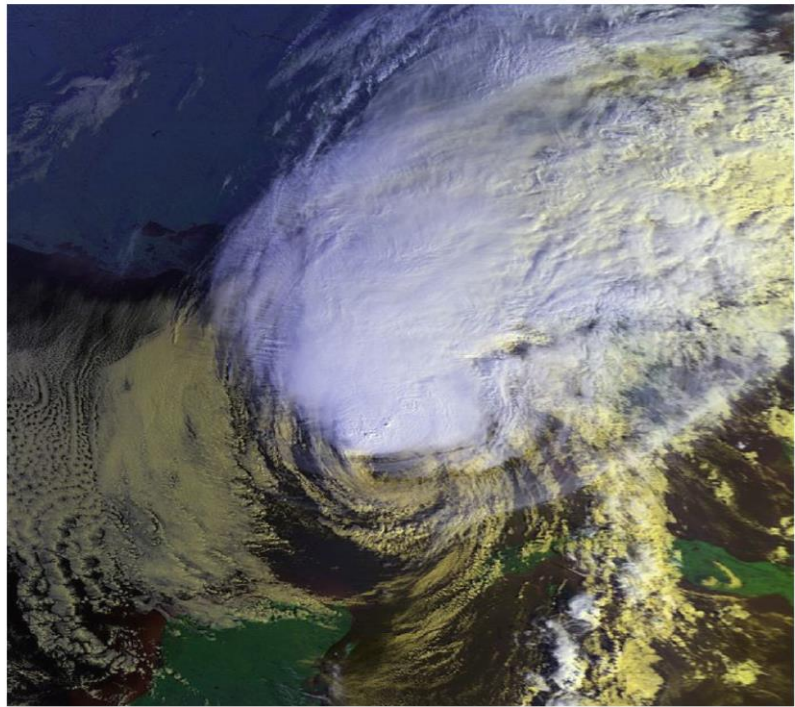
The impact also severed a People's Gas pipeline that runs along the tracks.

Johnson said soil was replaced along 500 feet of the pipeline at the request of People's Gas, which wanted the fertilizer removed from the soil for fear that its acidity would corrode the company's pipeline.

That's true, Hunt said — but it was on the other side of the tracks.

On his side of the tracks, he said, the railroad crew only covered up the fertilizer and leveled the ground two or three years ago

► See DERAIL, page 2B



Lakeland Ledger February 9, 1992

- 33 train cars derailed
- 1,500 tons of di-ammonium phosphate pellets (DAP) & 3,000 gallons of diesel
- Natural gas line broken
- 450 people evacuated



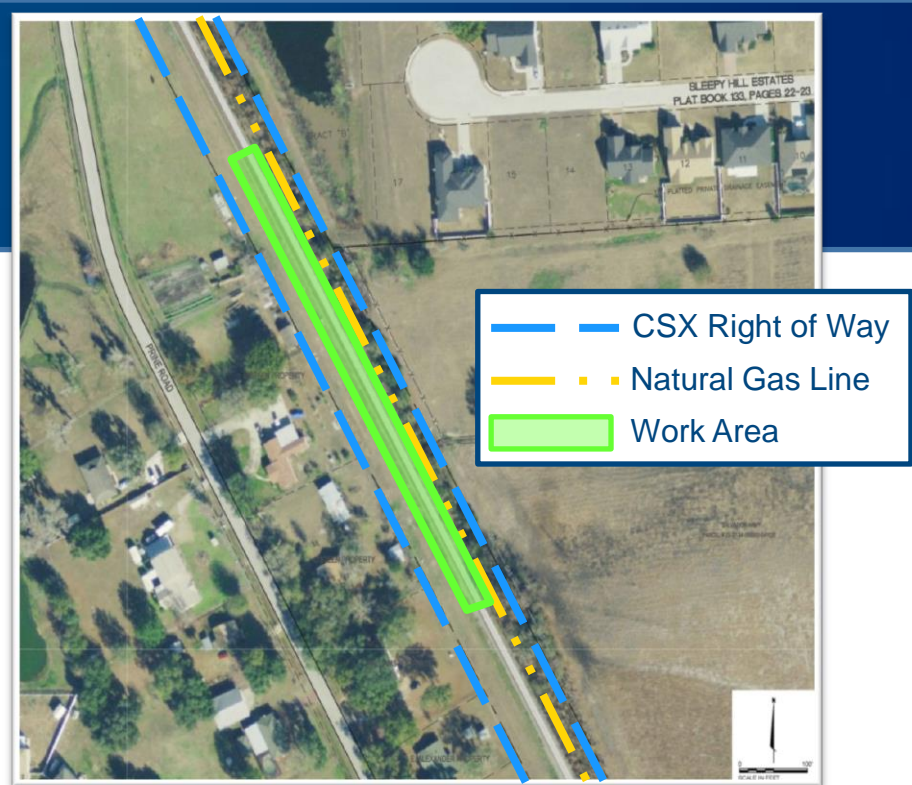
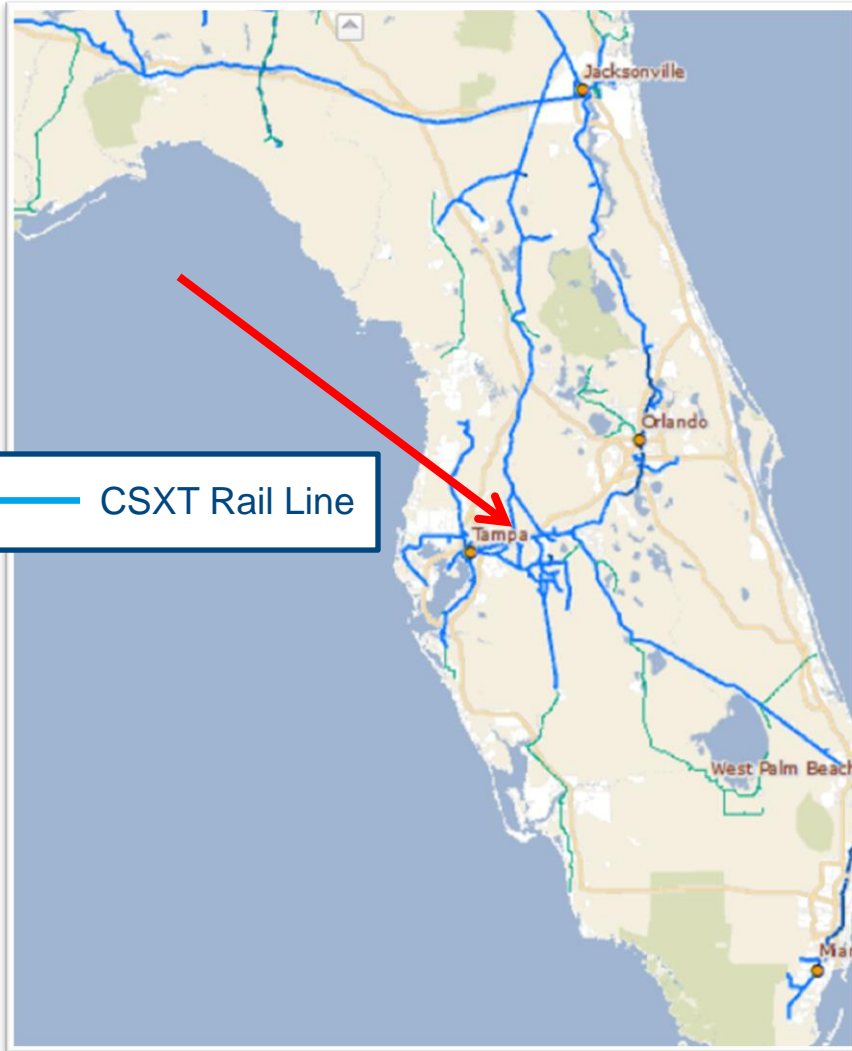
# SITE HISTORY



- Multiple excavations
- Affected groundwater



# CHALLENGES



- Cannot reroute trains
- Limited time frame for work
- Proximity to residences
- Limited work area
- Above grade infrastructure



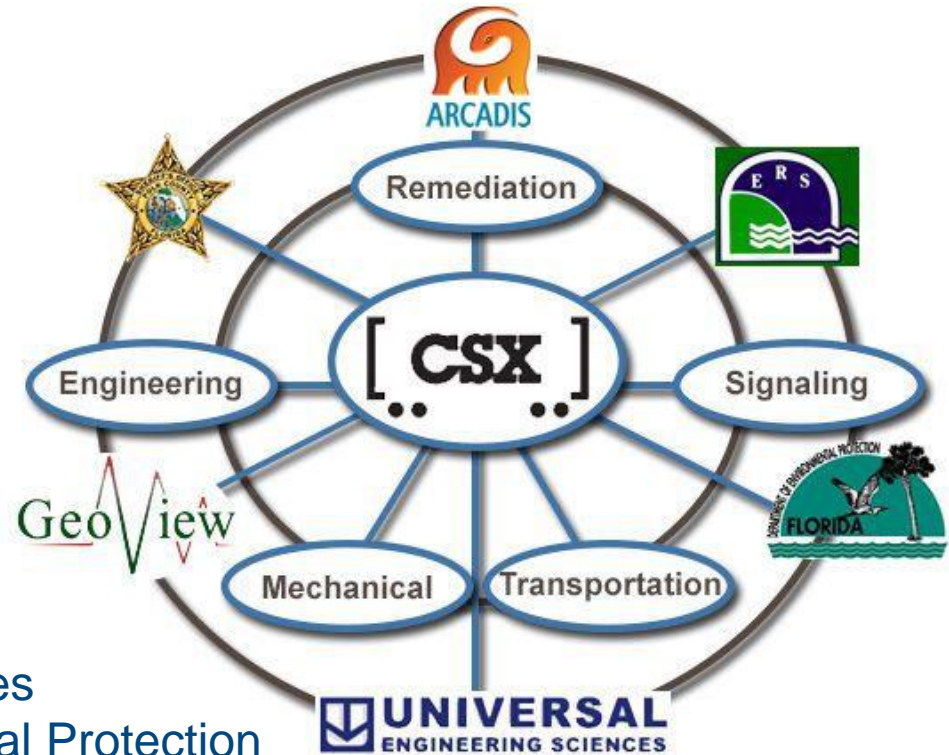
# COMMUNICATION

## Internal

- CSX Remediation
- CSX Transportation
- CSX Engineering
- CSX Mechanical
- CSX Signals

## External

- ARCADIS
- Environmental Remediation Services
- Florida Department of Environmental Protection
- Polk County Sheriff's Department
- Geoview
- Universal Engineering Sciences
- Local Hotels and Business
- Residents



# COMMUNITY STANDARD OF CARE

CSX Standard of Care



- Flyer for neighbors
- Information hotline
- Hotel
- Catering for the crew
- Security



## What to Expect

Starting Monday, June 17, 2013 you will start seeing additional truck traffic in your area. Dump trucks will be delivering and staging the clean fill material along the CSX right-of-way. A temporary driveway will be used to get trucks off of the right-of-way and back out onto Pine Road.

Starting Friday, June 28, 2013 excavation activities will begin along the railroad tracks. Two hundred and fifty feet of tracks will be temporarily removed to give workers and machinery access to the affected soils.

**Excavation activities will continue for 30 hours straight and should conclude around 5:00 p.m. Sunday, June 30.**

During this time, the railroad property will be lit by large bright lights in order to create a safe work area for our contractors. Two large excavators will be used to remove the affected soil, while backhoes will transport the



Dump trucks will remove all excavated soils and take them to a designated disposal facility.

Trucks carrying affected soils will not travel along Pine Road. After all excavation activities are complete, the temporary driveway will be restored.



## CSX Commitment to the Community

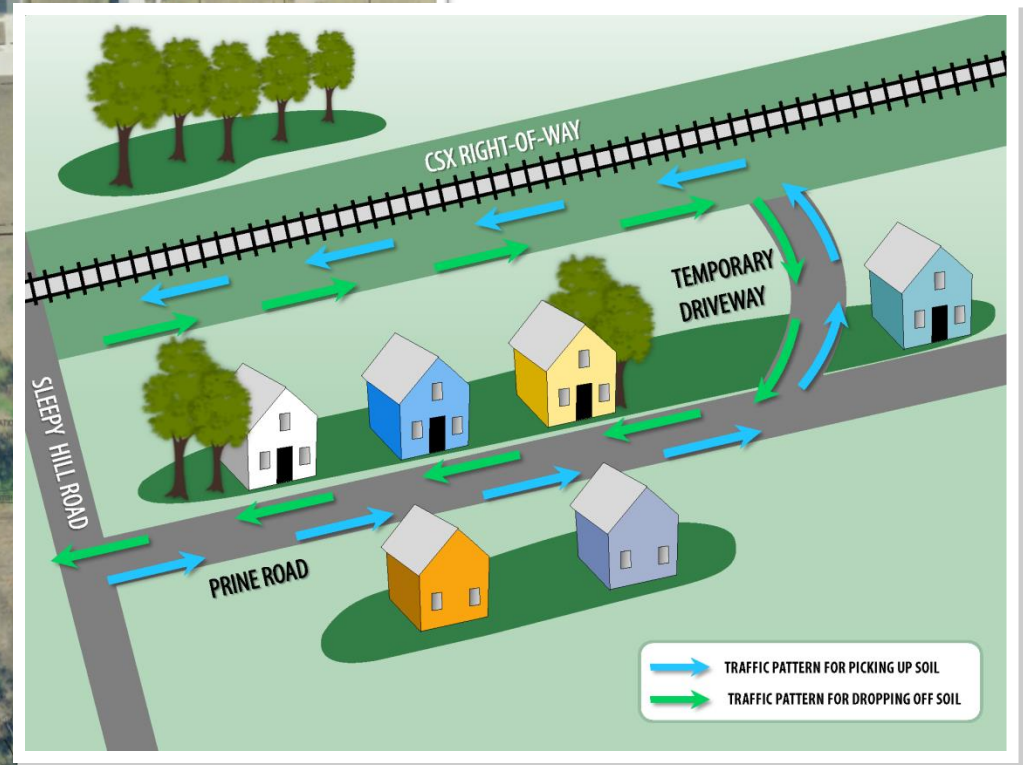
Safety is a core value at CSX, one that factors into every decision the company makes regarding our employees, customers, and the communities we serve. CSX is fully committed to the health and safety of your community and our workers. We are taking every step possible to ensure that this work is done safely.

We also understand that this work will be disruptive to your weekend. Because of this, CSX is willing to provide you and your family a daily per diem for food and lodging if you would like to stay somewhere else during the time that we are working.

## CSX Transportation Griffin Site Information Update June 2013



# LIMITED WORK AREA





# PRE-EXCAVATION ACTIVITIES



# INFORMATION



# EXCAVATION ACTIVITIES



# BACKFILLING ACTIVITIES



# POST EXCAVATION



# CONCLUSIONS

- Advanced planning
- Communication
- Leadership concurrence
- One goal
- Team effort
- Follow through



# HOW TOMORROW MOVES



Imagine the result

