



WILLIAM W. HAY RAILROAD ENGINEERING SEMINAR  
SPONSORED BY NORFOLK SOUTHERN CORPORATION  
PRESENTS:

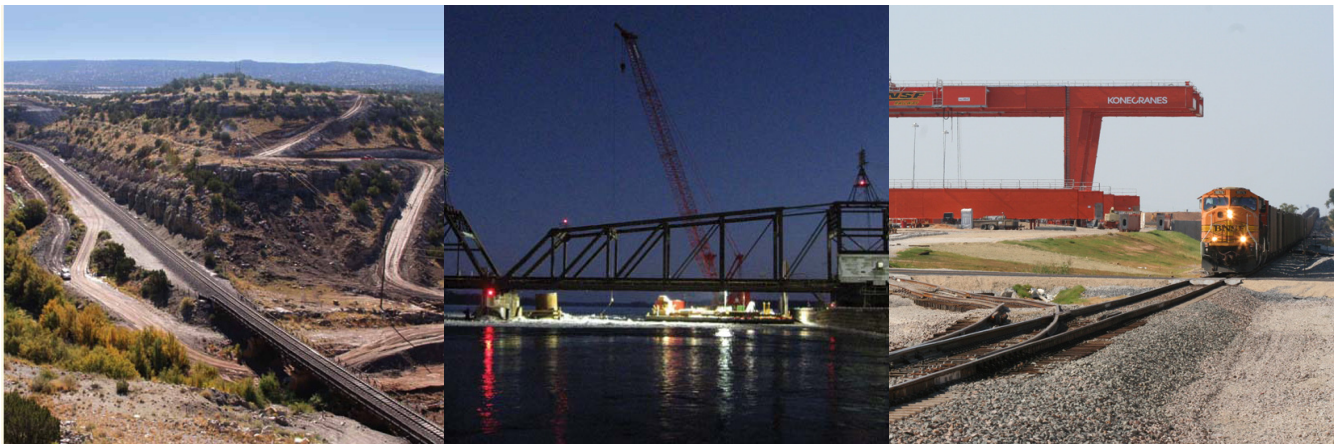
BOB BOILEAU  
BNSF RAILWAY

# “BNSF RAILWAY CAPITAL EXPANSION PROGRAM”

DATE: NOVEMBER 19TH, 2010

TIME: NOON

LOCATION: 233 GRAINGER COMMONS ROOM



Sponsored by:



STUDENTS WELCOME AND ENCOURAGED TO ATTEND