

2010 RAILROAD ENVIRONMENTAL CONFERENCE

26-27 OCTOBER 2010

ILLINI UNION
UNIVERSITY OF ILLINOIS AT URBANA-CHAMPAIGN
URBANA, ILLINOIS



PROGRAM



ILLINOIS

RAILROAD ENGINEERING PROGRAM



American Short Line and
Regional Railroad Association



The Railway Association of Canada

AREMA

American Railway Engineering and
Maintenance-of-Way Association



ASSOCIATION
OF AMERICAN
RAILROADS

SUPPORTERS 2010

We wish to recognize and thank our Railroad Environmental Conference - 2010 Supporters.
Their financial support is an essential component in making this event a success

10+ YEAR SUPPORTERS:



Kennedy/Jenks Consultants
Engineers & Scientists

ONE COMPANY | *Many Solutions*™



**Distinguished
Supporter:**



5+ YEAR SUPPORTERS:



Conference Overview and Featured Events

MONDAY, OCTOBER 25TH, 2010

League of Railway Industry Women Luncheon	11:30am - 1:00pm
The League of Railway Industry Women will host their annual luncheon from 11:30 - 1:00 pm at the iHotel followed by a tour of University of Illinois railroad engineering projects. Anyone interested in attending the luncheon or obtaining additional information about the League of Railway Industry Women can contact Nicole Bazzy at 412-995-3000 or nebazzy@burnswhite.com.	
Exhibitor set-up	1:00pm - 5:00pm

TUESDAY, OCTOBER 26TH, 2010

Continental Breakfast (exhibitor hall)	7:00am - 9:00am
Registration Open	7:00am - 5:00pm
Presentation Sessions	8:00am - 11:20am
AAR Environmental Excellence Award	11:20am - 11:45am

Robert Fronczak

Assistant Vice President, Environment and Hazardous Materials - Association of American Railroads

Luncheon and Supporter Acknowledgement (Illini Union Room 314)	11:45am - 1:10pm
Presentation Sessions	1:10pm - 5:15pm
Reception/Poster Presentations	5:00pm - 6:45pm

AREMA COMMITTEE 13 BANQUET*- Illini Union Ballroom - 2nd Floor
Banquet

7:00pm

Glenn Millner

Partner and Principal Toxicologist - CTEH

"Environmental Response in the Gulf: the Deepwater Horizon Spill Response and Cleanup"

8:00pm

WEDNESDAY, OCTOBER 27TH, 2010

AREMA Committee 13 meeting (Colonial Room, 1st floor)	7:00am - 8:00am
Continental Breakfast (exhibitor hall)	7:00am - 9:00am
Registration Open	7:00am - 5:00pm
Presentation Sessions	8:00am - 11:35am
Luncheon (Illini Union Room 314)	11:35am - 1:25pm
Presentation Sessions	1:25pm - 5:25pm
Supporter/Exhibitor Reception	5:25pm - 6:30pm

THURSDAY, OCTOBER 28TH, 2010

Exhibitor Breakdown	7:00am - 11:00am
---------------------	------------------

*advance registration needed for AREMA banquet

Technical Session Schedule (some sessions are concurrent)

Tuesday

Energy, Emissions, and Air Quality	8:10am - 11:25am, Illini Union - Room C
Risk Management	1:20pm - 3:00pm, Illini Union - Room 407
Sustainability	1:20pm - 3:00pm, Illini Union - Room C
Environmental Response	3:00pm - 5:00pm, Illini Union - Room 407
Noise and Vibration	3:00pm - 4:35pm, Illini Union - Room C
Passenger Rail	4:35pm - 5:00pm, Illini Union - Room C

Wednesday

Compliance	8:00am - 11:30am, Illini Union - Room C
Remediation	10:45am - 5:25pm, Illini Union - Room 407
Storm Water and Waste Water	11:10am - 3:45pm, Illini Union - Room C
Environmental Management Systems	3:45pm - 5:25pm, Illini Union - Room C

Spoken Presentations - Tuesday 26 October

	Illini Union - Room B	Illini Union - Room 407 (4th Floor)
	Energy, Emissions, and Air Quality Moderator: Robert Fronczak - AAR	
8:00	Welcome and Introduction <i>Christopher Barkan - Professor and Director of Railroad Engineering Program University of Illinois at Urbana-Champaign</i>	
8:10	Determining the True Benefits of Alternative Fuels <i>Chet Culley - Kansas City Southern Railroad Michael Kraeski - ERM</i>	
8:35	Producing Amtrak's GHG Inventory and Associated Challenges <i>Celia Ann Prentice - Amtrak</i>	
9:00	Locomotive After-Treatment Systems for EPA Tier4 Legislation and the Benefits of Metal Substrate Technology to Meet this Challenge <i>Markus Downey and Claus Bruestle - Emitec Inc.</i>	
9:25	Air Quality Procedures for the Chicago Region Environmental and Transportation Efficiency (CREATE) Projects <i>Walt Zyznieuski - Illinois Department of Transportation</i>	
9:50	Fuel Cell Locomotive Demonstration Performance and Results <i>Melanie Johnson - U.S. Army ERDC-CERL Arnold R. Miller, Kris S. Hess, Timothy L. Erickson, and James L. Dippe Vehicle Projects</i>	
10:15	BREAK - Illini Union Room B (Exhibit Hall)	
10:35	Effects of Biodiesel Blending on Exhaust Emissions from a Switching Locomotive <i>Jing Guo and Edward Peltier - University of Kansas</i>	
11:00	Diesel Particulate Filter System Application on a Three Generator Switch Locomotive <i>Wassim Klink, Saji Pilaj, Rick Paczewski, Penelope Markatou, and Wilson Chu Johnson Matthey</i>	
11:25	AAR Environmental Excellence Award <i>Robert Fronczak - Assistant Vice President, Environment and Hazardous Materials Association of American Railroads</i>	
11:50	LUNCH - Illini Union Room 314 (3rd Floor)	
	Sustainability Moderator: Kevin Keller - HDR	Risk Management Moderator: Melissa Godlewski - Kennedy/Jenks
1:20	Environmental Sustainability, Rail Facilities, and GIS Modeling – Developing a Decision Making Tool for the Environmentally Sustainable Placement of Rail Facilities <i>Michael Laas, Aaron Quesada, and Robert McMullen - Gannett Fleming David Gilbert - GeoDecisions, a Division of Gannett Fleming</i>	Railroad Bridges and Lead-Based Paint: An Environmental Hazard? <i>Paul Kurzanski - CSX Transportation Stephen Blair and Pat Harrison - AMEC Earth and Environmental, Inc. Mike Feamster and Casey Harbison - CTEH Jaime Krejsa and Joe Papineau - EnviroScience, Inc.</i>
1:45	Panel: Sustainability in the Railroads <i>Chantale Despres - CN Dave Seep - BNSF Railway Rich Russell - Norfolk Southern Rick Nath - CSX Transportation Bob Toy - Union Pacific Railroad Roy Deihchman - Amtrak</i>	Environmental Laws, Natural Resource Damages Matters, and Remediation Cases Impacting Railroads and Associated Issues <i>John Gilmour - Jackson Gilmour & Dobbs, PC</i>
2:10		Liability Management Associated with Un-Used Buildings – Railroad Issues <i>Angela Cook and John Wise - Golder Associates Inc.</i>
2:35		Real Estate Leased Property Audit Program Norfolk Southern Corporation <i>Judy Nash - Norfolk Southern Scott Keating and Rob Wallace - AECOM</i>
	Noise and Vibration Moderator: Gary Rozmus - Gannett Fleming	Environmental Response Moderator: Geoff Reeder - UP
3:00	Noise Challenges Facing Europe <i>Lisette Mortensen - International Union of Railways (UIC)</i>	Storm Response Preparedness: Applying Lessons of the Past to the Responses of the Future <i>Jeffrey LaRock - AMEC Earth and Environmental, Inc. Richard K. Nath - CSX Transportation</i>
3:25	BREAK - Illini Union Room B (Exhibit Hall)	
3:45	Noise and Vibration Considerations on Shared-Use Rail Corridors <i>Lance Meister - Harris Miller Miller & Hanson Inc.</i>	Emergency Response Plan for Railroads in Sole-Source Aquifer Areas <i>Jeff Bonsteel and Marc Sanford - ARCADIS Paul Kurzanski - CSX Transportation</i>
4:10	"The Sounds of Transit" Hearing is Believing <i>Ahmed El-Aassar - Environmental Acoustics Inc./Gannett Fleming Inc.</i>	Environmental Response and Restoration of the CSXT Glencoe Derailment Site <i>Jamie Krejsa - EnviroScience, Inc. Joe Riepenhoff - ARCADIS Michael M. Austin and Keith Brinker - CSX Transportation</i>
	Passenger Rail	
4:35	The Challenges of Implementing a Recycling Program for Amtrak Passenger Trains and Stations <i>Joanne Maxwell and Emma Cattafi - Amtrak</i>	Environmental Response to a Sodium Hydroxide Release <i>Sherry Eaton and Phillip Moddle - Golder Associates Ltd. Alexandre Borges - CN</i>
5:00	Poster Presentation Reception - Illini Union South Lounge	

Spoken Presentations - Wednesday 27 October

Time	Illini Union - Room B	Illini Union - Room 407 (4th Floor)
	Compliance Moderator: Leo Thorbecke - AECOM	
8:00	Preparing for an Enforcement Audit <i>Bruce Dumdei - ENVIRON International Corp.</i> <i>J. Jay Grove - GATX Corporation</i>	
8:25	The Art of Assessing Your Laboratory's Performance Through Performance Test Sample Studies <i>Ruth Forman and Rock J. Vitale - Environmental Standards, Inc.</i>	
8:50	Review of Environmental Issues Affecting the North American Railroads <i>Robert Fronczak - Association of American Railroads</i>	
9:15	PANEL: Railroads and Historic Preservation Compliance – Understanding Your Historic Property <i>Michael Madson and Joe Trnka - HDR Engineering, Inc.</i> <i>Robert Frame - Mead & Hunt</i> <i>Andrew Schmidt - Summit Envirosolutions</i> <i>Liz Abel – Minnesota DOT</i>	
10:05	Positioning for Shovel Ready Expansion - National Gateway Clearance Initiative <i>Hadley Stamm - ARCADIS</i> <i>Marty Marchaterre and Troy Neisz - AMEC Earth and Environmental, Inc.</i> <i>Keith Brinker - CSX Transportation</i>	
10:30	BREAK - Illini Union Room B (Exhibit Hall)	
		Remediation Moderators: Martina Schlauch Jones - ARCADIS and Stella Karnis - CN
10:45	Streamlined Approach to Permitting Expansion of the BNSF Railway Memphis Intermodal Facility <i>Douglas Dorsey and Jennifer Sunley - Hanson Professional Services Inc.</i>	LNAPL Mobility Tracer Testing <i>Andrew Pennington, Jonathon Smith, Brad Koons, Kevin Peterburs - ARCADIS</i> <i>Geoff Reeder - Union Pacific Railroad</i>
	Stormwater and Wastewater Moderator: Steve McNaughton - UP	
11:10	Quality Assurance of Erosion Prevention & Sediment Control from a Design Engineer Perspective <i>Robin Hagerty - AMEC Earth and Environmental, Inc.</i> <i>Paul J. Kurzanski - CSX Transportation</i>	Cost Saving Measures and Liability Management during Remediation of a Former CCA Wood Treating Facility <i>Duane Graves and Ky Palmore - Geosyntec Consultants</i> <i>Paul Kurzanski - CSX Transportation</i>
11:35	Mitigation of Stormwater Impacts from a Rail Yard <i>Wayne Amber - Geosyntec Consultants and</i> <i>Paul Kurzanski - CSX Transportation</i>	Leaving LNAPL in Place – A Risk Based Site Closure Approach <i>Kevin Peterburs and Martina Schlauch Jones - ARCADIS</i> <i>Geoffrey Reeder - Union Pacific Railroad</i>
12:00	LUNCH - Illini Union Room 314 (3rd Floor)	
1:25	Union Pacific Railroad's Wastewater Treatment Plant Instrumentation, Networking And Control System - WINC <i>Mark Ross - Union Pacific Railroad</i>	Using a Well Defined Conceptual Site Model to Select the Most Appropriate Remedial Technology <i>Hélène Richer, Bernard LeFrançois, Phil Moddle, and Sherry Eaton - Golder Associates</i> <i>Stella Karnis - CN</i>
1:50	Wastewater Treatment Plant Improvements at a Norfolk Southern Railyard – Going Green <i>Charles Brown - AECOM</i>	Are You Sure You Are Chasing Your Diesel Release? Using Forensics to Close Diesel Releases at Rail Sites in Illinois <i>Todd O'Brien and Eric Cherry - ARCADIS</i> <i>Geoffrey Reeder - Union Pacific Railroad</i>
2:15	Managing Storm Water and Industrial Wastewater <i>E.W. Chambers - Norfolk Southern</i> <i>Travis Cantley - Marshall Miller</i>	CN Harrison Yard: An Eye to the Future, Responsibility to the Past <i>Riaz Ahmed - TRC Environmental</i> <i>Bob Strong - CN</i>
3:05	BREAK - Illini Union Room B (Exhibit Hall)	
3:20	The Design and Construction of the Near Zero Discharge Stormwater Reuse System - CSX Transportation - Chesapeake Bay Piers, Baltimore, MD <i>John Calhoun - CSX Transportation</i> <i>Greg Menniti - Geosyntec</i>	Special Considerations for Remediating a Former Wood-Treating Facility in Karst Terrain <i>Keith White - ARCADIS</i> <i>Paul Kurzanski - CSX Transportation</i>
	Environmental Management Systems Moderator: Ken Roberge - CP	
3:45	GIS Technologies for Railroad Environmental Resource Management - Data at Your Fingertips <i>Julie Kloss - EMR, Inc.</i> <i>Charlie Duffy - Canadian Pacific Railway</i>	Award Winning Remediation Project – Seven Year Performance Record <i>Cameron Patterson, William Donald and Donald Bryant - Keystone Environmental Ltd.</i> <i>Stella Karnis - CN</i>
4:10	Building Environmental Engagement in Your Company <i>Bob Toy - Union Pacific Railroad</i>	Migration Pathway Assessment for a Chlorinated Solvent Plume, Windsor, Vermont <i>James Peace - Golder Associates</i> <i>Yves Decoste - CN</i>
4:35	Environmental Metrics in the Rail Industry <i>Norman Parker - Parker & Associates, Inc.</i>	In-Situ Remediation of Dissolved Chlorinated Hydrocarbons Via Enhanced Reductive Dechlorination - A Rail Yard Case Study <i>Dawn Gabardi and Ed Buc - ARCADIS</i> <i>LeeAnn Thomas - Canadian Pacific Railway</i>
5:00	Environmental Management Information Systems (EMIS) Implementation for the Transportation Sector <i>Jason Samus and Chris Kerlish - EA Engineering</i>	Non-Aqueous Phase Liquid (NAPL) Mobility Assessment <i>Kevin Hauschildt - Norfolk Southern</i> <i>Chuck Cline - Marshall Miller</i>
5:25	Exhibitor Reception - Illini Union Room B (Exhibit Hall)	

Poster Presentations

Poster presentation will be on display throughout the conference. There will be a special reception for the poster presenters in the South Lounge on Tuesday, October 26th from 5:00 to 6:45pm

Compliance

2010 Environmental Training for Transportation Employees

Richard K. Nath - CSX Transportation

Painless Permitting 101

Jennifer Thiemann - EMR, Inc.

Charlie Duffy - Canadian Pacific Railway

Railroad Equipment Negative Exposure Assessments related to Asbestos Containing Components

Dan Podraza - ENVIRON International

Clean Water Act Permitting and Compliance

Mark Willobee, Chriso Petropoulou, and Mark Willobee

Geosyntec Consultants

Paul Kurzanski - CSX Transportation

Energy, Emissions, and Air Quality

Survey of Current Diesel Locomotive Emission Control Technologies

Curtis Miller - JHU - EP Program

Impact of EPA's Greenhouse Gas Tailoring Rule on the Rail Industry

Stacy Carr and Jessica Coleman - Trinity Consultants

A Summary of Applicable Requirements under MACT Subpart ZZZZ to Owners and Operators of Stationary Engines

Jessica Coleman and Stacy Carr - Trinity Consultants

Modeling Impacts of Freight Transportation on Global, Regional and Urban Air Quality

Taesung Hwang, Fan Yan, Yanfeng Ouyang, Bumsoo Lee,

Tami Bond and Chris Barkan

University of Illinois at Urbana-Champaign

Environmental Management Systems

Six Proven Ways to Supercharge Your Environmental Liability Management Performance

Roger Well - ENFOS, Inc.

Rational Application of Natural Resources and Environment Protection at Railway Transport Development

Manana Moistsrapishvili, Nugzar Rurua, Gocha Enuqidze, and Luka Balavadze

Georgian Technical University

Recovery Trench Installation Lessons Learned

Jeremy Seibert, Kevin Hendricks, and Craig Niedermeier

AECOM

Charles Thomas - BNSF Railway

Carey Neal - Conestoga-Rovers & Associates, Inc.

Sustainability

Moving Forward: How to Mainstream Sustainability

Anastasia Harrison and Charles Lynch - Gannett Fleming

Jim Brock - Avant IMC

Jonathon Pollack - Geo Decisions

Remediation

Multi-Dimensional Approach to a RCRA Corrective Action for Lead Impacted Soils at an Active Car Shop

Bertisabel M. Custer and J. Todd McFarland

AMEC Earth and Environmental, Inc.

Paul Kurzanski - CSX Transportation

Green and Sustainable Remediation of a Former Bulk Oil Facility, Evansville, IN

Bertisabel M. Custer and J. Todd McFarland

AMEC Earth and Environmental, Inc.

Paul Kurzanski - CSX Transportation

Strategies for Long-Term Groundwater Monitoring Projects

Todd Carignan and Jeff Bonsteel - ARCADIS

Paul Kurzanski - CSX Transportation

It's OK to Change – Adapting Your Remedial Approach to Evolving Regulatory Guidance

Michael Potter - ARCADIS

Paul Kurzanski - CSX Transportation

Sustainable Groundwater Remediation

Michael Kinder - Marshall Miller & Associates, Inc.

Regulatory Negotiations to Improve RR Site Remedy

Edward Roberts and Marc Sandford - ARCADIS

Paul Kurzanski - CSX Transportation

Risk and Liability Management

Pipeline Leak Detection – The Application of API 4716 to Railroad Facilities

Gary Crawford and Dan Frank - Argus Consulting

Abandonment of Underground Levee Wall Piping Penetrations, BNSF Railway Property, Omaha, Nebraska

Jeffrey Humenik - EMR, Inc.

Stormwater and Wastewater

Green and Sustainable Wastewater Treatment Facility Upgrade at CSXT Corbin Yard

Paul Zaines - AMEC

John Calhoun - CSX Transportation

Save Operating Costs by Modifying Permit Conditions

Kevin Peterburs and Martina Schlauch Jones - ARCADIS

Geoffrey Reeder - Union Pacific Railroad



Emergency Information



Dial **911** for assistance or **9-911** from a campus phone. The conference location is: Illini Union, 1401 W. Green St, Urbana, IL



Tornado: Use the stairs on the north or south side of the building to go to the basement to seek shelter.



Fire: Use the doors located on the west side of the building and meet on the southeast side of Altgeld Hall.

POLICE

Champaign Police Department (Non-emergency)

82 East University Ave, Champaign IL
217- 351-4545



Carle Foundation Hospital

611 West Park Street, Urbana IL
217- 383-3311

RREC Bus Schedule

Between Hawthorn Suites, Hilton Garden Inn, iHotel, Hampton Inn and Illini Union

Tuesday

October 26th, 2010

7:00-9:00 am*

9:00-4:00 pm**

4:00-7:00 pm*

Departing After the Banquet

Wednesday

October 27th, 2010

7:00-9:00 am*

9:00-4:00 pm**

4:00- 7:00 pm*

* = running continuously between hotels and Illini Union

** = running on reduced schedule. Check with registration desk (217-244-1340) for schedule

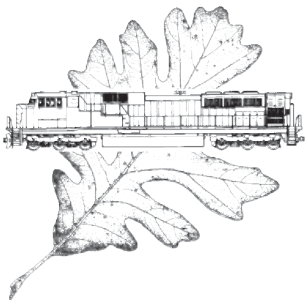
Save the date

Please join us for the

2011 Railroad Environmental Conference

27-28 October 2011

Mark your calendars now!



Champaign/Urbana Recommended Restaurant List (all directions from Illini Union facing north)

Alexanders Steakhouse

202 W. Anthony Dr., Champaign, IL 61820
217-359-1789

Take Green St. West to Neil St. Turn right.
Vear right on Walnut St.
Turn left on E. Washington St.
Turn right on Neil St.
Turn left on Anthony Drive
On right hand side.

Bacaro - Italian (fine dining)

113 N Walnut St., Champaign, IL 61820-4009
217-398-6982

Take Green St. West to Neil St.
Turn right.
Bear right on Walnut St.
On left hand side.

Biaggi's Ristorante Italiano

2235 S Neil St., Champaign, IL 61820
217-356-4300

Take Green St. West to Neil St. Turn left.
About 2 miles down on right hand side

Black Dog Smoke & Ale House (casual bar)

201 N Broadway Ave., Urbana, IL 61801
217-344-9334

Green St. East to Lincoln Ave. Turn left.
Turn right on University Ave.
Turn right on Broadway Ave. On right hand side

Escobar - Native Latino

6 E Columbia Ave., Champaign, IL 61820
217-352-7467

Take Green St. West to Neil St. Turn right.
Bear right on Walnut St.
Turn left on Columbia
On right hand side.

Great Impasta - Italian

156 Lincoln Sq # D, Urbana, IL 61801
217-359-7377

Green St. East to Busey Ave. Turn left.
Turn right on W. Elm St.
Turn right on S. Broadway Ave.
Turn left at Lincoln Square
On right hand side

Jim Gould - Steakhouse (fine dining)

1 E. Main St, Champaign, IL 61820
217-531-1177

Take Green St. West to Neil St.
Turn right.
Bear right on Walnut St.
Turn left on Main St.
On right hand side.

Kennedy's at Stone Creek

2560 S Stone Creek Blvd., Urbana, IL 61802
217-384-8111

Take Greens St. East to S. Lincoln. Turn right.
Turn left at W. Florida Ave.
Turn right at Philo Rd.
Take 1st left onto E. Colorado Ave.
Turn right on Stone Creek Blvd
On right hand side

Kofusion - Asian (Sushi)

1 E Main St # 104, Champaign, IL 61820
217-531-1166

Take Green St. West to Neil St. Turn right.
Bear right on Walnut St.
Turn left on E. Main St.
On right hand side

Radio Maria - Cajun/Spanish

119 N Walnut St., Champaign, IL 61820
217-398-7729

Take Green St. West to Neil St.
Turn right.
Vear right on Walnut St.
On left hand side.

Silvercreek - Casual fine dining

402 N Race St., Urbana, IL 61801
217-328-3402

Take Green St. East to Lincoln. Turn left
Turn right on W. University Ave.
Turn right on N. Race St.
On left hand side

V. Picasso - Tapas bar and Lounge

214 W Main St., Urbana, IL 61801
217-328-3402

Take Green St. East to Lincoln. Turn left
Turn right on W. Main St..
On left hand side at corner of Main St.
and Springfield Ave.

Public Parking

P Please use the shuttle busses that are provided. Parking on campus is *extremely* limited.

Meters are available on South Mathews Avenue. Please note there is a two hour time restriction. There is a parking lot east of Legends (located on the corner of Sixth and Green St.) with metered parking. Inquire at registration desk for more information.

Useful Locations

Kinkos

613 South Wright St.
Champaign, IL 61820
217-344-2085

Expresso Royale Cafe

Illini Union Courtyard Cafe
217-333-7106

Starbucks

503 E Green St.
Champaign, IL 61820
217-344-8613

Illini Union Bookstore

809 South Wright St.
Champaign, IL 61820
217-333-2050

Walgreens

407 East Green St.
Champaign, IL 61820
217-344-0121

Cocomero (frozen yogurt)

709 South Wright St.
Champaign, IL 61820
217-328-3888

Folletts Bookstore

627 South Wright St.
Champaign, IL 61820
217-356-1368

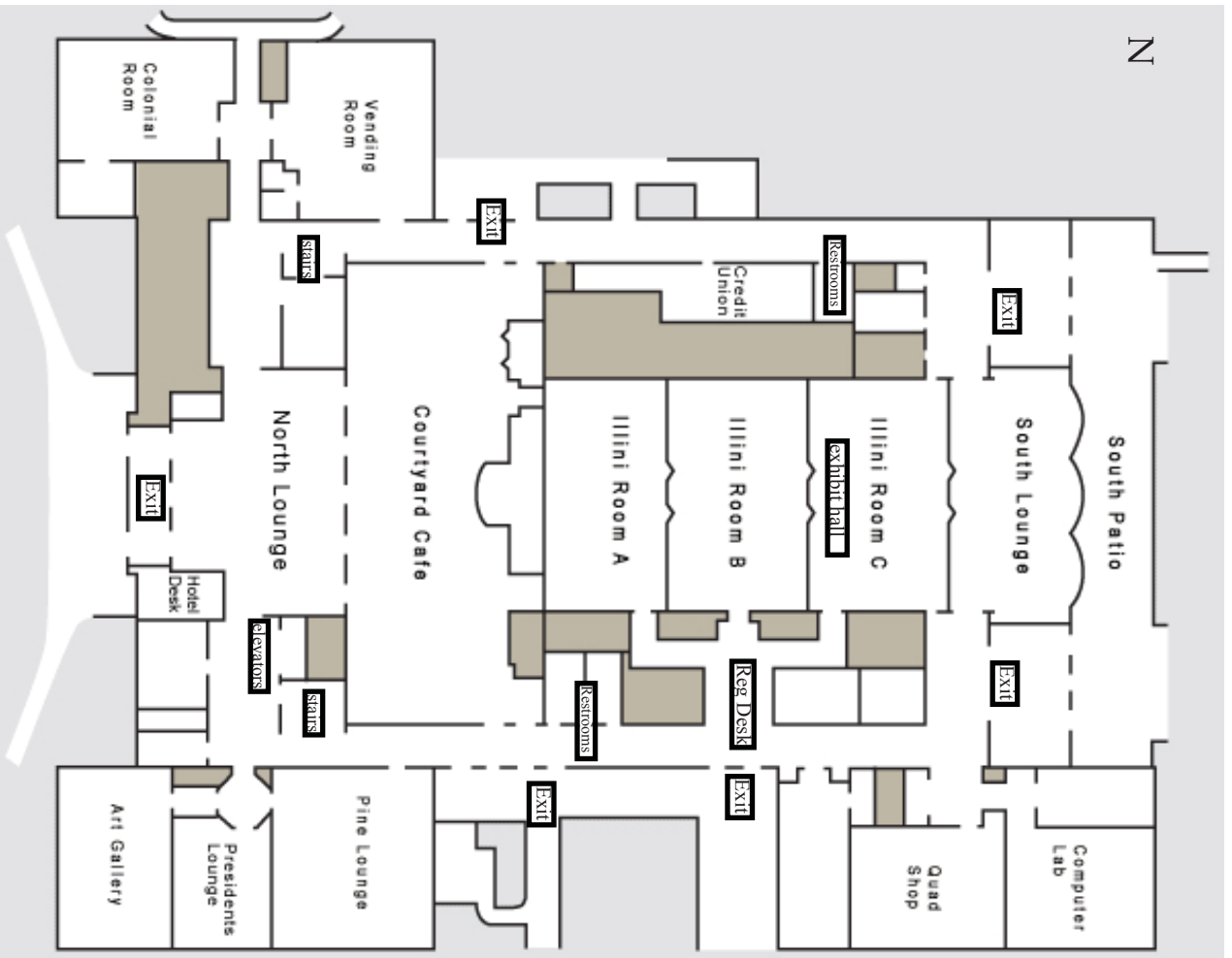
T.I.S. Bookstore

707 South Sixth St.
Champaign, IL 61820
217-337-4900

Wireless Internet



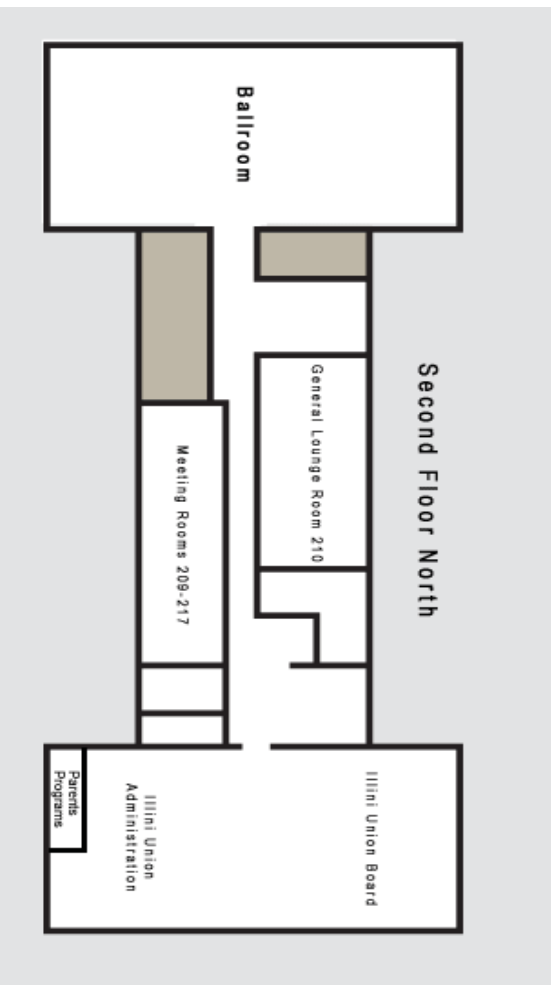
Illini Union Main Floor



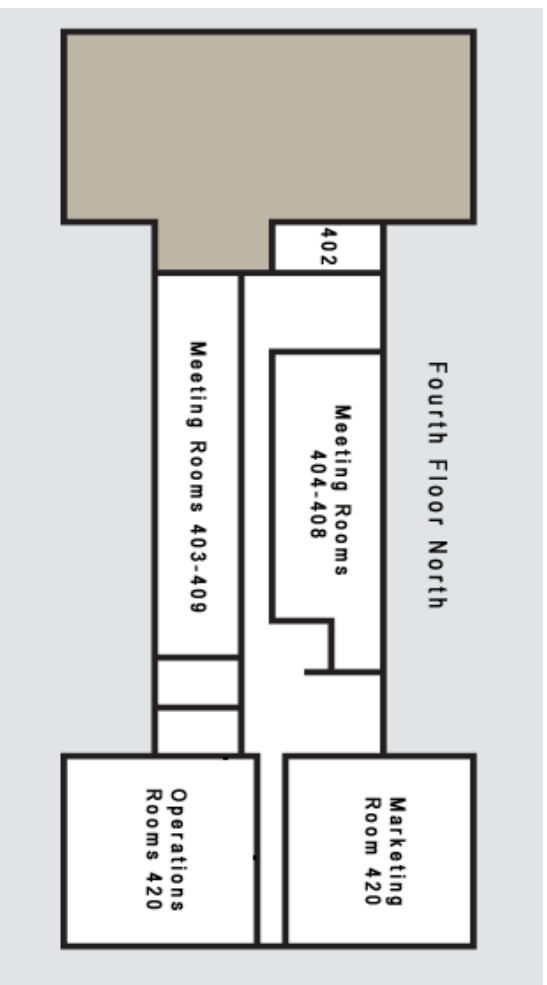
Illini Rooms A,B,C, and South Lounge

Illini Union
1401 W. Green St.,
Urbana, IL 61801
217-333-4666

Illini Union Upper Floors

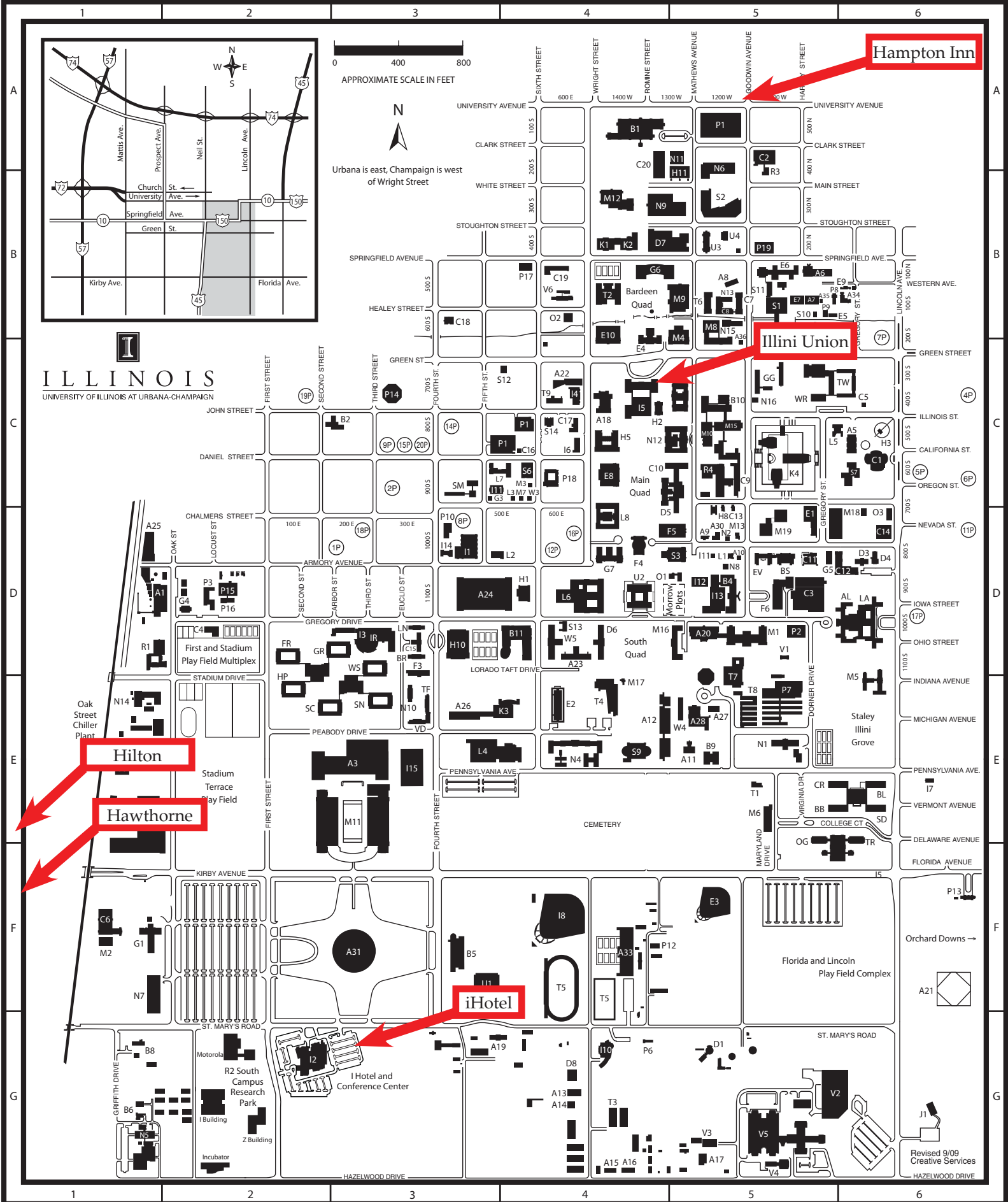


Ballroom - Please take north elevator or staircase to 2nd floor.



Rooms 407 – Please take north elevator or staircase to 4th floor.

University of Illinois - Campus Map



Hampton Inn

Illini Union

Hilton

Hawthorne

iHotel

Exhibitors

Abscope	Emitec	Micro-Blaze
Accutest Laboratories	EMR	Oil Skimmers
AECOM	Envirocon	Pace Analytical Services
AMEC Earth & Environmental	Environmental Works	Pinnacle Engineering
ARCADIS	Enviroscience	Polystar
BELFOR Environmental	Gannett Fleming	Portec Rail Products
Century Group	Geo-Cleanse International	PSC
CETCO	Geosyntec	Seneca Companies
CH2M Hill	Golder Associates	Shannon & Wilson
Clean Harbors Environmental Services	HDR Engineering	Shaw Environmental
Conestoga-Rovers	Hulcher Services	Terracon Consultants
CTEH	Isotec	TestAmerica
Dune Technologies	JRW Bioremediation	URS
Eagle SWS	Lancaster Laboratories	
	Marshall Miller & Associates	

Planning Committee

Riaz Ahmed – TRC	Steve McNaughton – Union Pacific
Chris Barkan – University of Illinois	Lance Meister – HMMH
Sam Farnsworth – AMEC	Ryan Mills – BNSF
Robert Fronczak – AAR	Bernie Noonan – EMR
Don Girard – BNSF	Geoff Reeder – Union Pacific
Melissa Godlewski – Kennedy Jenks	Ken Richardson – ARCADIS
Suzan Gonder – Environmental Works	Ken Roberge – Canadian Pacific
Kim Hagemann – University of Illinois	Ken Rose – OmniTRAX
Kevin Hauschildt – Norfolk Southern	Gary Rozmus – Gannett Fleming
Martina Schlauch Jones – ARCADIS	Richard Russell – Norfolk Southern
Stella Karnis – Canadian National	Oscar Sorensen – CH2M Hill
Scott Keating – AECOM	Hadley Stamm – ARCADIS
Kevin Keller – HDR	Leo Thorbecke – AECOM
Chris LoRusso – AMTRAK	John Williams – Pace Analytical
Jay Martin – AMEC	

Conference Organizing Team

Chris Barkan	Josh Houston
Jerri Lyn Beck	Mary Nokes
Kim Hagemann	Kelcey Willmot

Useful Contact Information

RREC 2010 Registration Desk	217-244-1340	Illini Union Guest Rooms	217-333-3030
Hampton Inn	217-337-1100	Yellow Cab	217-355-3553
Hawthorn Suites	217-398-3400	U of I Golf Courses	217-359-5613
Hilton Garden Inn	217-352-9970	Stone Creek Golf Club	217-384-6690
iHotel	217-819-5000		