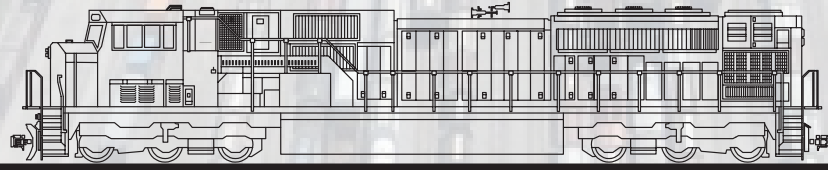


15th RAILROAD ENVIRONMENTAL CONFERENCE



5-6 NOVEMBER 2013

PROGRAM



SUPPORTERS 2013

We wish to recognize and thank our Railroad Environmental Conference - 2013 Supporters. Their financial support is an essential component in making this event a success.

DISTINGUISHED SUPPORTER:



15 YEAR SUPPORTERS:

Kennedy/Jenks Consultants
Engineers & Scientists



10+ YEAR SUPPORTERS:



**CONESTOGA-ROVERS
& ASSOCIATES, INC.**



ONE COMPANY *Many Solutions* SM



ARCADIS



**Golder
Associates**



Cardno®



**CENTER FOR TOXICOLOGY
AND ENVIRONMENTAL HEALTH, LLC**

5+ YEAR SUPPORTERS:



Conference Overview and Featured Events

TUESDAY, NOVEMBER 5TH, 2013

Continental Breakfast	7:00am	-	9:00am
Registration Open	7:00am	-	5:30pm
Presentation Sessions	8:00am	-	11:55am

AAR Environmental Excellence Award (Illini Room A) 11:55am - 12:20pm

Robert Fronczak

Assistant Vice President, Environment and Hazardous Materials - AAR

Luncheon and Supporter Acknowledgement (room 314)	12:00pm	-	1:25pm
Presentation Sessions	1:25pm	-	5:25pm
Reception/Poster Presentations (Illini Union South Lounge)	5:25pm	-	6:45pm

AREMA COMMITTEE 13 BANQUET* - Illini Union Ballroom - 2nd Floor
Reception and Banquet 6:45pm

AREMA Banquet Speaker:

Normand Pellerin

8:15pm

Assistant Vice President - Environment & Sustainability - CN

"Integration of Sustainability in Railroad Operating Practices"

WEDNESDAY, NOVEMBER 6TH, 2013

AREMA Committee 13 meeting (Illini Union - room 407)	7:00am	-	8:00am
Continental Breakfast	7:00am	-	9:00am
Registration Open	7:00am	-	5:15pm
Presentation Sessions	8:00am	-	11:50am
Luncheon (Illini Union Ballroom - 2nd Floor)	11:50am	-	1:30pm

KEYNOTE Speaker:

Carlos Roig

12:30pm (Illini Union Ballroom - 2nd Floor)

Executive Vice President - Media and Content Strategy - Home Front Communications

"Own Your Media: How Digital Strategy Moves the Message"

Presentation Sessions	1:30pm	-	5:30pm
Adjourn	5:30pm		

THURSDAY, NOVEMBER 7TH, 2013

Conceptual Site Models Workshop**	8:00am	-	5:00pm
-----------------------------------	--------	---	--------

*advance registration needed for AREMA banquet

**advance registration needed for Conceptual Site Models Workshop

Technical Session Schedule (some sessions are concurrent)

Tuesday

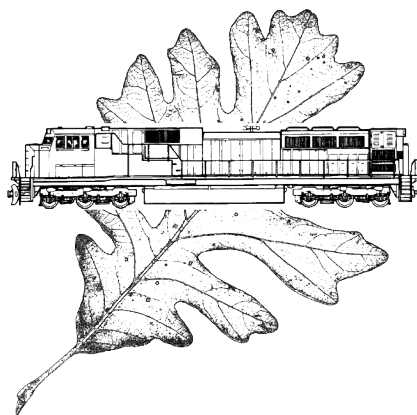
Plenary Session	8:10am	-	10:15am	Illini Room A
Sustainability	10:35am	-	1:45pm	Illini Room 210, Illini Room A
Stormwater & Wastewater	10:35am	-	11:35am	Illini Room A
AAR Environmental Excellence Award	11:35am	-	12:00pm	Illini Room A
Stormwater & Wastewater Panel	1:45pm	-	2:25pm	Illini Room A
Environmental Response & Emergency Planning	1:25pm	-	2:05pm	Illini Room 210
Environmental Analytical Issues	2:25pm	-	3:25pm	Illini Room A
Energy, Emission, & Air Quality	2:05pm	-	3:05pm	Illini Room 210
Risk & Liability Management	3:45pm	-	5:25pm	Illini Room A
Environmental Planning of Passenger & Freight Rail Projects	3:45pm	-	5:25pm	Illini Room 210

Wednesday

Petroleum Transportation Session	8:00am	-	9:50am	Illini Room A
Remediation	10:10am	-	5:30pm	Illini Room A
Environmental Management Information Systems	10:10am	-	11:30am	Illini Room 210
Noise & Vibration	1:30pm	-	3:10pm	Illini Room 210
Compliance & Permitting	3:30pm	-	5:30pm	Illini Room 210

Spoken Presentations - Tuesday 5 November - Morning

Illini Union - Room A		Illini Union - Room 210
	Plenary Session (room A) Moderator: Ken Rose - OmniTRAX	
8:00	Welcome and Introduction Christopher Barkan - Professor and Director of RailTEC University of Illinois at Urbana-Champaign	
8:10	Railroad Fuels 104: Natural Gas Mike Iden - Union Pacific Railroad	
8:35	Environmental Issues Affecting the Association of American Railroads and North American Rail Industry Robert Fronczak - Association of American Railroads	
9:00	Human Health Risk Assessment Techniques to Support the Establishment of Cleanup Target Levels for Infrequently Spilled Compounds Barbara Pugh, Brian Magee, and Andrew McManus - ARCADIS Raghu Chatrathi - CSX Transportation, Inc.	
9:25	Geographic Response Plans for River and Coastal Railroad Corridors (A Risk Management Tool) Nic Winslow - BNSF Railway Colin McWilliams - Kennedy/Jenks Consultants	
9:50	State Regulators Perspective on Greener Clean-Ups Heather Nifong - EPA	
10:15 BREAK - Illini Union Room B		
	Stormwater & Wastewater (room A) Moderator: Melissa Godlewski - Kennedy/Jenks	Sustainability (room 210) Moderator: Riaz Ahmed - TRC
10:35	Whose Blood is on the Cutting Edge of Innovative Technologies? J. Gregory Menniti - Geosyntec Consultants, Inc. John C. Calhoun and Mike Casadonte - CSX Transportation, Inc.	Water's True Value in the Desert - Connecting Two Regions Dawn Brook - TRC Environmental Corporation Ryan Gottsch - Union Pacific Railroad
10:55	Stormwater Challenges and Solutions for Intermodal Facilities Ross W. Dunning, P.E. - Kennedy/Jenks Consultants	Monitoring and Evaluation of Sustainability Indicators in Site Remediation Projects François Beaudoin - Golder Associates, Inc. Stella Karnis - CN
11:15	Negotiations and Challenges to Revise NPDES Permit Limits for Copper and Ammonia Ed Copeland - ARCADIS David Lefler, C. Russell McDaniel and Matthew Gernand Norfolk Southern Corporation	CSX Transportation Curtis Bay Piers - Geothermal Cooling Melissa Fagan - Geosyntec Consultants John Calhoun and Meaghan Atkinson - CSX Transportation, Inc.
	AAR Environmental Excellence Awards (room A)	
11:35	AAR Environmental Excellence Award Robert Fronczak - Association of American Railroads	
12:00 LUNCH and Supporter Acknowledgement - Illini Union Ballroom (2nd Floor)		

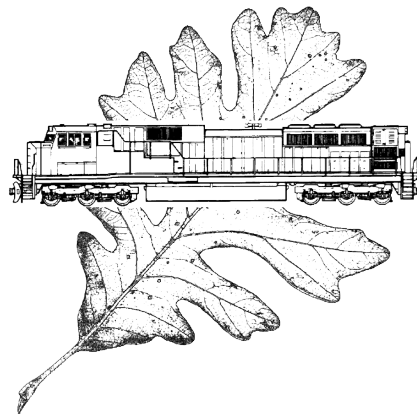


Spoken Presentations - Tuesday 5 November - Afternoon

	Illini Union - Room A	Illini Union - Room 210
	Sustainability (room A) Moderator: Gregg Menniti - Geosyntec	Environmental Response & Emergency Planning (room 210) Moderator: Mark Murphy - Conestoga Rovers
1:25	Waste - Still Opportunities After All These Years? <i>Bob Toy - Union Pacific</i>	Anticipating Crude Oil <i>Andrew McManus and Fred Payne - ARCADIS</i> <i>Stella Karnis, Jean Ouellette and Lee Nelson - CN</i>
1:45	Stormwater & Wastewater Panel (room A) Moderator: Gregg Menniti - Geosyntec Stormwater & Wastewater Panel Discussion <i>Robert Bukowski, Petr Masopust, Danielle Ahern - AMEC</i> <i>Robert Graham - Amtrak</i> <i>MikeClift - BNSF</i> <i>Curtis Barz - CN</i> <i>John McInnis, David Bice, Edward Quiroz and Sashi Aburri - ARCADIS</i>	Early Implementation of Risk-Based Strategy Leads to Accelerated Cleanup and Closure-A Case Study of Soda Ash, Cutting Oil, and Methanol Derailment in Cisco, TX <i>Andrew Pawlisz and Mark Murphy - Conestoga-Rovers & Associates, Inc.</i> <i>Geoffrey B. Reeder - Union Pacific Railroad</i>
2:05		Energy, Emissions & Air Quality (room 210) Moderator: Robert Fronczak - AAR Corporate Greenhouse (GHG) Inventory Verification at CSX - Advantages and Lessons Learned <i>Meaghan Atkinson - CSX Transportation, Inc</i> <i>Stephanie McMackin - CH2M HILL</i>
2:25	Environmental Analytical Issues (room A) Moderator: John Williams - Pace Analytical Analysis Techniques to Reduce the Positive Bias Associated with DRO Analysis Results <i>Jenifer Lewis, Charles Neslund and Robert Brown - Eurofins / Lancaster Laboratories, Inc</i>	Preparing a Credible Greenhouse Gas (GHG) Intensity Benchmark for the Railroad Industry <i>Adam Loney, Gordon Reusing, and Douglas Smith - Conestoga-Rovers & Associates, Inc.</i> <i>Ken Roberge - Canadian Pacific</i>
2:45	How Improper Field Sample Collection, Preservation, Shipment, and Storage Issues Can Affect Your Data <i>Ruth Forman and Rock Vitale - Environmental Standards, Inc.</i>	Verification Testing of the Diesel Particulate Control System on a NREC 3GS21B Gen Set Locomotive <i>Jose Ramirez, Paul Andersen, and Rita Aiello - Johnson Matthey Stationary Emissions Control LLC.</i>
3:05	Real-time Kerosene and Diesel Fuel Footprint Differentiation using LIF-UVOST™ Waveform Signature Analysis <i>Curtis Barz - CN</i> <i>Michael Wolf, Barry Harding, Shea Muller and Lori VanderKam - AECOM</i>	
3:25	BREAK - Illini Union Room B	
	Risk & Liability Management (room A) Moderator: Sam Farnsworth - AMEC	Environmental Planning of Passenger & Freight Rail Projects (room 210) Moderator: Gary Rozmus - GEI Consultants, Inc.
3:45	Liability Reduction through Creation of a Lease Review Program <i>Richard Adams and Lauren Alkidas - ARCADIS</i> <i>Yves Decoste, Stella Karnis and Rick Verkler - CN</i>	Passenger Rail Environmental Issues Panel <i>Ileana Ioanciu and Steven Eget - Dewberry</i> <i>Angelo Elmi - New York City Transit</i> <i>Theresa McClure - HDR Engineering</i> <i>Amanda Martin - Iowa DOT</i> <i>Gerald Obert - New Jersey Transit Corporation</i> <i>Cristian Nieto-Franco and Gary Walker - Hatch Mott MacDonald</i>
4:05	Planning Capital Upgrade Events through Inspections <i>Beau Perry - TRC Environmental Corporation</i> <i>Seble Afework - CN</i>	
4:25	Land Use Controls through Constructed Wetlands/Wildlife Habitat and Long-Term Conservation; Preferred Land Use of a Residential Coastal Community on the Pascagoula River, MS <i>Jeff Beckner and Joe Shisler - ARCADIS</i> <i>Matthew Adkins - CSX Transportation, Inc.</i>	
4:45	Environmental Audits of "Trans-load" Activities <i>Norman Parker - Parker & Associates, Inc</i> <i>Erika Akkerman - CN</i>	Perspectives on Passenger Rail Service Development Panel <i>Wynne Davis - Federal Railroad Administration</i> <i>Amanda Martin - Iowa Department of Transportation</i> <i>Judy Mitchell - Canadian Pacific</i> <i>Kelly Farrell - HDR Engineering, Inc.</i>
5:05	Fuel Ethanol: Guideline for Release Prevention & Impact Mitigation <i>Jim Holland - Pinnacle Engineering</i>	
5:25	Poster Presentation Reception - Illini Union South Lounge	
6:45	AREMA Committee 13 Banquet - Illini Union Ballroom - 2nd floor Normand Pellerin - Assistant Vice President - Environmental & Sustainability - CN "Intergration of Sustainability in Railroad Operating Practices"	

Spoken Presentations - Wednesday 6 November - Morning

Illini Union - Room A		Illini Union - Room 210
7:00	AREMA Committee 13 Meeting (Room 407)	
	Plenary Session (room A) Moderator: Scott Keating - GEI Consultants, Inc.	
8:00	Special Session Environmental Considerations for Rail Transport of Petroleum Crude Normand Pellerin - CN Robert Fronczak - Association of American Railroads John Kind - CTEH Devin Sprinkle - CN Grete Bridgewater - Canadian Pacific David Poole - Dillon Consulting John Lovenburg - BNSF Railway	
9:50	BREAK - Illini Union Room B	
	Remediation (room A) Moderator: Martina Schlauch Jones - ARCADIS	Environmental Management Information Systems (room 210) Moderator: Joanne Maxwell - Amtrak
10:10	Increasing the Bottom Line and Decreasing Risk – A Next-Generation Programmatic Approach to Managing Storm Water, Wastewater, and Water Jason Carter - ARCADIS Stephen Tew - Progress Rail Services Company	PTC and Other Wireless Communication Towers - Developing a Programmatic Approach for NEPA Screenings for Large Numbers of Sites Jay Diebold, Joseph Mion and Robert Sutcliffe Golder Associates, Inc. Stella Karnis, Kari Harris and Dale Hein - CN
10:30	Evaluation of Monitored Natural Attenuation to Optimize a Sampling Program at a Chlorinated Solvent Site Elizabeth Cohen and Lauren Alkidas - ARCADIS Paul Kurzanski - CSX Transportation, Inc.	Modernizing the Environmental Liability Management Platform: A Business Case Stella Karnis - CN Roger Well - ENFOS, Inc.
10:50	Risk Management and Liability Control: A Holistic Approach to Addressing Rail Yard Environmental Impacts Michele Gurgas, Jackson Parker and Michelle Rumler - ARCADIS Paul Kurzanski - CSX Transportation, Inc.	Important Considerations in Selecting an Environmental Management Information System (EMIS) Solution for the Railroad Industry Graeme Dykes - Enviance
11:10	Multiple Lines of Evidence for Assessing Product Recovery to the Maximum Extent Practicable Greg Landers and Keith Piontek - TRC Environmental Corporation Chris Fitzgerald - BNSF Railway	Rapid Deployment of Tablet Computers for Field Data Collection Robert Sproles and Mark Murphy Conestoga Rovers & Associates Geoff Reeder - Union Pacific Railroad
11:30	Evaluation of Natural Source Zone Depletion Using Temperature and Carbon Dioxide Flux: a Case Study Steven Gaito and Jonathon Smith - ARCADIS Paul J. Kurzanski - CSX Transportation, Inc.	
11:50	LUNCH - Illini Union Ballroom (2nd Floor) Carlos Roig - Executive Vice President - Media and Content Strategy - Home Front Communications “Own Your Media: How Digital Strategy Moves the Message”	



Spoken Presentations - Wednesday 6 November - Afternoon

Illini Union - Room A		Illini Union - Room 210	
Remediation con't (room A) Moderator: Geoff Reeder - Union Pacific		Noise & Vibration (room 210) Moderator: Betsy Beauchamp - TestAmerica	
1:30	In a Pig's Eye: Correction and Beneficial Reuse of Railroad Property that was Formerly Part of a Municipal Dump (and is now a State Superfund Site) Jonathan Murer - GEI Consultants Scott Zurn and LeeAnn Thomas - Canadian Pacific	Noise Reduction in Curves Brigita Altenbaher - Elpa d.o.o.	
1:50	The Story of a Drainage Ditch: From Iron Staining to PCBs to Mother Nature Paul Kurzanski - CSX Transportation, Inc. Bertisabel Custer and Todd McFarland - AMEC	Under Tie Pads and Their Effect on Track Stability, Ballast Degradation and Ground-Borne Noise Levels in Special Trackwork Bruno Meira y Duran and Patrick Carels - CDM Novitec Jan Mys - INFRABEL Luc Schillemans Technum - Tractebel	
2:10	Barrier Walls Design and Implementation – Lessons Learned from Life in the Trenches Teresa Fischer and David Riotte - Geosyntec Consultants Raghu Chatrathi - CSX Transportation, Inc.	FCM/RAC Proximity Initiative Cynthia Lulham - FCM-RAC Proximity Management Program	
2:30	A Review of State LNAPL Guidance – Changes are Coming Treve Andrews - AECOM Stella Karnis - CN	Tools for Assessing Noise Impact from Freight Rail Operations Lance Meister - Cross-Spectrum Acoustics LLC	
2:50	Use of Above-Ground Resistivity Mapping to Identify NAPL Migration Pathways Jeff Gentry and Donna Laudermitch - CH2M HILL Jim Diel - Union Pacific Railroad	The Correlation Between Maximum Mean Sound Level per Hour and Equivalent Sound Level per Hour for Taiwan High Speed Train Noise Yun-chung Lee, Ming-kun Tseng, and Yao-sen Chen Taiwan High Speed Rail Corporation (THSRC)	
3:10 BREAK - Illini Union Room B			
Remediation con't (room A) Moderator: Chuck Cline - Cardno and Kevin Keller - HDR		Compliance & Permitting (room 210) Moderator: Leo Thorbecke - AECOM	
3:30	Effective, Sustainable In-Situ Remediation Approach at Industrial Sites Using a Combination of Zero-Valent Iron and Emulsified Vegetable Oil Robert Kelley and Mike Liskowitz - ARS Technologies, Inc.	The Mysteries of Permitting Transloading Facilities: Real Life Experiences Jan Barnes - Transflo	
3:50	Vapor Intrusion Investigations – Best Practices for the Evaluation of Soil Gases at a Rail Yard Site Michael Lawrence and Alex Hibbard - TRC Environmental Corporation Gregory Jeffries - BNSF Railway	Can the Valley Elderberry Beetle Derail Capacity Improvement Funding Jeffrey Rice - URS Corporation Michael Stanfill - BNSF Railway	
4:10	A Case Study Example: No Further Action at a Tank Car Spill Site in Rural Michigan Curtis Bartz - CN Barry J. Harding, Brad Hoare, and Lori VanderKam - AECOM	Building a Strategic Environmental Audit Scoring System Amber Moore and Craig Caldwell - Amtrak	
4:30	Future Land Use and Sustainable Remediation at the Sydney Tar Ponds: A Case Study and Lessons Learned on Adaptive Remedial Design Bruce Noble, David Wilson and John Ryan - AECOM Donnie Burke - Sydney Tar Ponds Agency	Sustainability - Wetland Permitting Delays Turned Into a Project and Environmental Gain Joseph Palo - Golder Associates, Inc.	
4:50	Using LNAPL Transmissivity to Make Smart Decisions about LNAPL Recovery Brad Koons, Kevin Peterburs and Martina Schlauch Jones - ARCADIS Geoffrey Reeder - Union Pacific Railroad	Union Pacific Railroad, Louisiana Capacity Expansion: Integrated Design, Construction, and Permitting to Expedite Project Construction Debra Schafer - Union Pacific Railroad Christine Roberts and Doug Urry - CH2M HILL	
5:10	Efficient and Cost-Effective Assessment and Remediation of a Former Wood Treatment Facility in an Active Rail Yard Leroy Leonard and Duane Graves - Geosyntec Paul Kurzanski - CSX Transportation, Inc.	The New Cesar Chavez National Monument Changes the Setting and Dynamic of Environmental Review Jeffrey Rice - URS Corporation Michael Stanfill - BNSF Railway	
5:30	Adjourn		

Poster Presentations

Compliance and Permitting

1. Navigating the Permitting Arena - Implications on Schedule and Process for Demolition of a Large Railroad Ore Dock - Chequamegon Bay, Ashland, Wisconsin

Jay Diebold and Mark Bergeon - Golder Associates, Inc.
Devin Sprinkle, Brian Hayden, and Rick Verkler - CN

2. Laser Beams and Historic Structures, Brooklyn Subdivision Bridge, Oregon

Lori Price - CH2M HILL
Steve Cheney - Union Pacific Railroad

3. Wetlands in the Desert Southwest, UPRR Salt Creek Bridge, Yuma Subdivision, Southern California

Janet Hill - CH2M HILL
Deb Schafer - Union Pacific Railroad

4. Expediting Difficult Wetland Mitigation and Permitting with Early Agency Coordination

Michele Martzke - CB&I
Devin Sprinkle and Kari Harris - CN

Environmental Analytical Issues

5. Reduced Volume Technology: Ways to Save the Environment and Reduce the Stress of Organic Sample Collection and Analyses

Judith Morgan - ESC Lab Sciences

6. Analytical Tools For Spill Characterizations

Kesavalu Bagawandoss - Intertek

Environmental Management Information Systems

7. CSX Transportation Curtis Bay Piers

Melissa Fagan - Geosyntec Consultants
John Calhoun and Karen Adams - CSX Transportation, Inc.

Environmental Response

8. Benefits of Adaptive Design for Investigation with Expedited Remediation for Environmental Response in Active Rail Areas

Mark Klemmer, Jessica Gattenby, and Andrew McManus - ARCADIS
Raghu Chatrathi - CSX Transportation, Inc.

9. Emergency Asbestos Abatement and Demolition of Fire Damaged Structure

Roy Stancil - CB&I
Rick Nath - CSX Transportation, Inc.

10. Incident Response – Working Toward Closure From Day One

Fred Payne and Terri Rubis - ARCADIS
Paul Kurzanski and Bill Parry - CSX Transportation, Inc.

Noise and Vibration

11. Hump Yards in Silence

Brigita Altenbahr - Elpa d.o.o.

12. Shimlift To Improve Alignment

Paul Kampfraath - Kampa International
Jelte Bos - Movares

Remediation

13. Design and Implementation of the Enhanced DNAPL Recovery System to Eliminate Risk to the Public and Field Personnel While Continuing to Collect Essential Data

Matthew Griles - ARCADIS
Paul J Kurzanski - CSX Transportation, Inc.

14. The Vital Role of Comprehensive LNAPL Characterization in Developing an Appropriate Remedial Action Strategy

Michael Lawrence - TRC Environmental Corporation
Gregory Jeffries - BNSF Railway

15. Improved Conceptual Site Model Facilitates Revised Remedial Approach for Effective Cleanup to Achieve Rapid Site Closure

D. Scott Pittenger - Norfolk Southern Corporation
Brooke Y. Bennett, J. Wesley Sterling, Jon C. Williams and Mark S. Westray - GEI Consultants, Inc.

Risk and Liability Management

16. A Tree Falls in the Forest: Statistical Evaluation of Forest Material at a Remediation Site

Currie Mixon - GEI Consultants, Inc.
C. Russell McDaniel - Norfolk Southern Corporation

17. How to Save Money and Landfill Space Using Segregation of Target Organ Toxicity in Risk Assessments

Sara Mathews and Patrick Harrison - AMEC
Matthew Adkins - CSX Transportation, Inc.
Ann Holbrow-Verwiol - ToxStrategies, Inc
William Frez - OM Group, Inc.

18. Mitigation Construction and Minimizing Mitigation Liabilities – The BNSF Kansas City Intermodal Facility Case Study Update

Tim Fobes - HDR Inc.
David Flick - Terra Technologies

Stormwater and Wastewater

19. The Use of Real-Time Weather Forecasting Integrated Controls To Improve Stormwater Capture and Reuse

J. Gregory Menitti - Geosyntec Consultants, Inc.
John C. Calhoun - CSX Transportation, Inc.

21. Union Pacific Railroad, Pocatello Wastewater Treatment System Improvements

Paul Strickland - Garver
Mark Ross - Union Pacific Railroad

22. Wastewater Treatment Plant Improvements at a Norfolk Southern Rail Yard – A More Efficient Sludge Drying Process

Arthur Newby and Robert Stolt - AECOM
David Warchöl - Norfolk Southern Corporation

23. Union Pacific Railroad, Cheyenne Railyard Industrial Wastewater and Stormwater System Improvements – Part 2

Oscar Sorensen - CH2M HILL
Mark Ross – Union Pacific Railroad

Emergency Information



Dial **911** for assistance or **9-911** from a campus phone. The conference location is: Illini Union, 1401 W. Green St, Urbana, IL



Tornado: Use the stairs on the north or south side of the building to go to the basement to seek shelter.



Fire: Use the doors located on the west side of the building and meet on the southeast side of Altgeld Hall.

POLICE

Champaign Police Department (Non-emergency)

82 East University Ave, Champaign IL
217- 351-4545



Carle Foundation Hospital

611 West Park Street, Urbana IL
217- 383-3311

RREC Bus Schedule

*Between Hawthorn Suites, Hilton Garden Inn, iHotel, Comfort Inn Suites,
Hampton Inn, Holiday Inn, and Illini Union*

Tuesday

November 5th, 2013

7:00am-7:00 pm*

Departing after the banquet

Wednesday

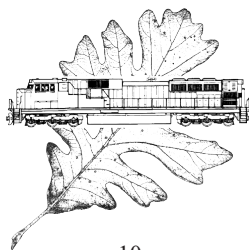
November 6th, 2013

6:45am-6:00pm*

* = running continuously between hotels and Illini Union every 20 minutes

Save the date

Please join us for the
2014 Railroad Environmental Conference
28-29 October 2014
Mark your calendars now!



Champaign/Urbana Recommended Restaurant List (all directions from Illini Union facing north)

Alexanders Steakhouse

202 W. Anthony Dr., Champaign, IL 61820
217-359-1789

Take Green St. West to Neil St. Turn right.
Vear right on Walnut St.
Turn left on E. Washington St.
Turn right on Neil St.
Turn left on Anthony Drive
On right hand side.

Bacaro - Italian (fine dining)

113 N Walnut St., Champaign, IL 61820-4009
217-398-6982

Take Green St. West to Neil St.
Turn right.
Bear right on Walnut St.
On left hand side.

Biaggi's Ristorante Italiano

2235 S Neil St., Champaign, IL 61820
217-356-4300

Take Green St. West to Neil St. Turn left.
About 2 miles down on right hand side

Black Dog Smoke & Ale House (casual bar)

201 N Broadway Ave., Urbana, IL 61801
217-344-9334

Green St. East to Lincoln Ave. Turn left.
Turn right on University Ave.
Turn right on Broadway Ave. On right hand side

Destihl (Gastrobrewpub)

301 N. Neil St, Champaign, IL 61820
217-356-0301

Take Green St. West to Neil St. Turn left.
About 2 miles down on left hand side

Escobar - Native Latino

6 E Columbia Ave., Champaign, IL 61820
217-352-7467

Take Green St. West to Neil St. Turn right.
Bear right on Walnut St.
Turn left on Columbia
On right hand side.

Great Impasta - Italian

156 Lincoln Sq # D, Urbana, IL 61801
217-359-7377

Green St. East to Busey Ave. Turn left.
Turn right on W, Elm St.
Turn right on S. Broadway Ave.
Turn left at Lincoln Square
On right hand side

The Big Grove Tavern - Midwestern Craft Cuisine

1 E. Main St, Champaign, IL 61820
217-239-3505

Take Green St. West to Neil St.
Turn right.
Bear right on Walnut St.
Turn left on Main St.
On right hand side.

Kofusion - Asian (Sushi)

1 E Main St # 104, Champaign, IL 61820
217-531-1166

Take Green St. West to Neil St. Turn right.
Bear right on Walnut St.
Turn left on E. Main St.
On right hand side

Radio Maria - Cajun/Spanish

119 N Walnut St., Champaign, IL 61820
217-398-7729

Take Green St. West to Neil St.
Turn right.
Vear right on Walnut St.
On left hand side.

Silvercreek - Casual fine dining

402 N Race St., Urbana, IL 61801
217-328-3402

Take Green St. East to Lincoln. Turn left
Turn right on W. University Ave.
Turn right on N. Race St.
On left hand side

Public Parking

P Please use the shuttle busses that are provided. Parking on campus is *extremely* limited.

Meters are available on South Mathews Avenue. Please note there is a two hour time restriction. There is a parking lot east of Legends (located on the corner of Sixth and Green St.) with metered parking. Inquire at registration desk for more information.

Useful Locations

Kinkos

613 South Wright St.
Champaign, IL 61820
217-344-2085

Expresso Royale Cafe

Illini Union Courtyard Cafe
217-333-7106

Starbucks

503 E Green St.
Champaign, IL 61820
217-344-8613

Illini Union Bookstore

809 South Wright St.
Champaign, IL 61820
217-333-2050

Walgreens

407 East Green St.
Champaign, IL 61820
217-344-0121

Cocomero (frozen yogurt)

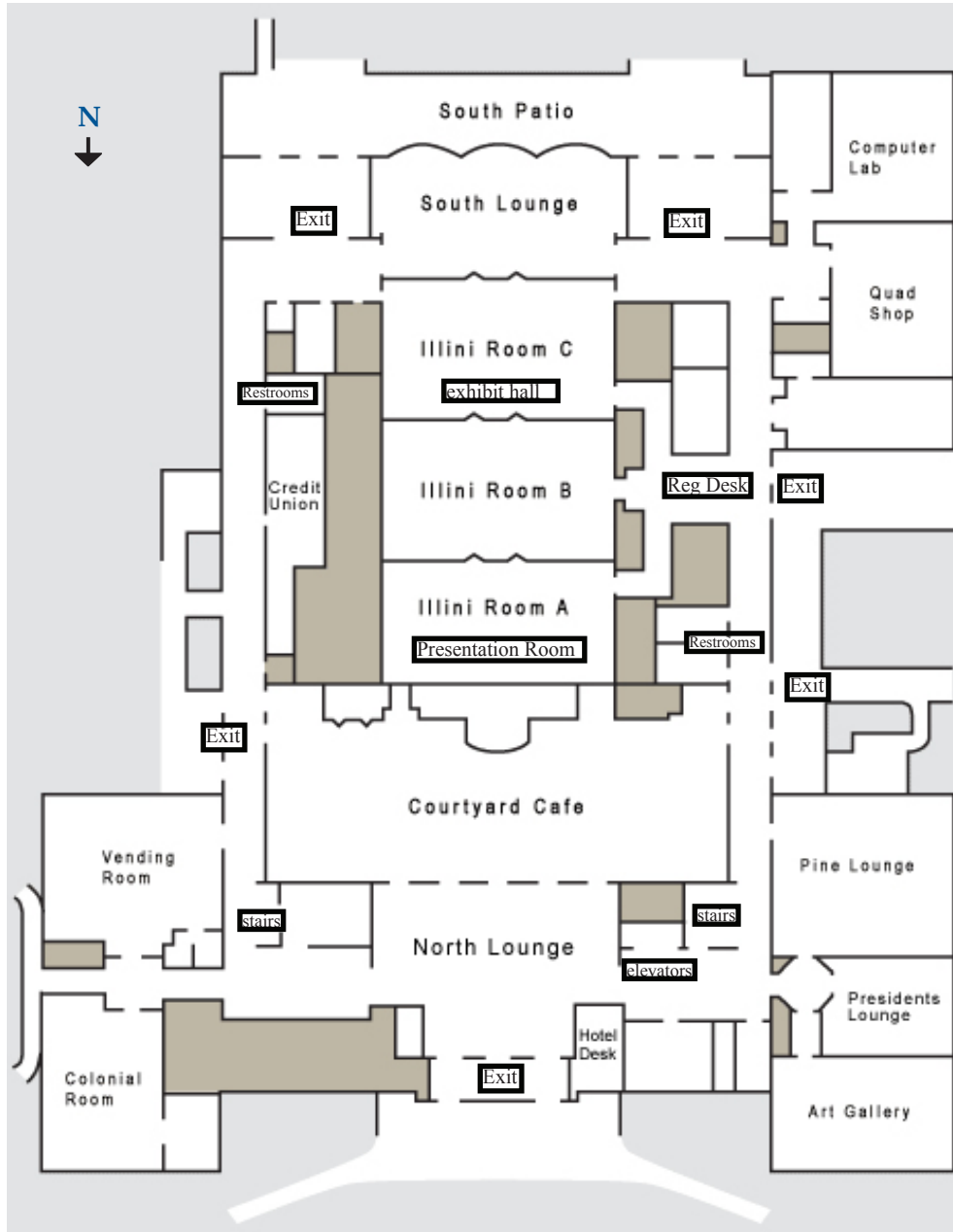
709 South Wright St.
Champaign, IL 61820
217-328-3888

Wireless Internet

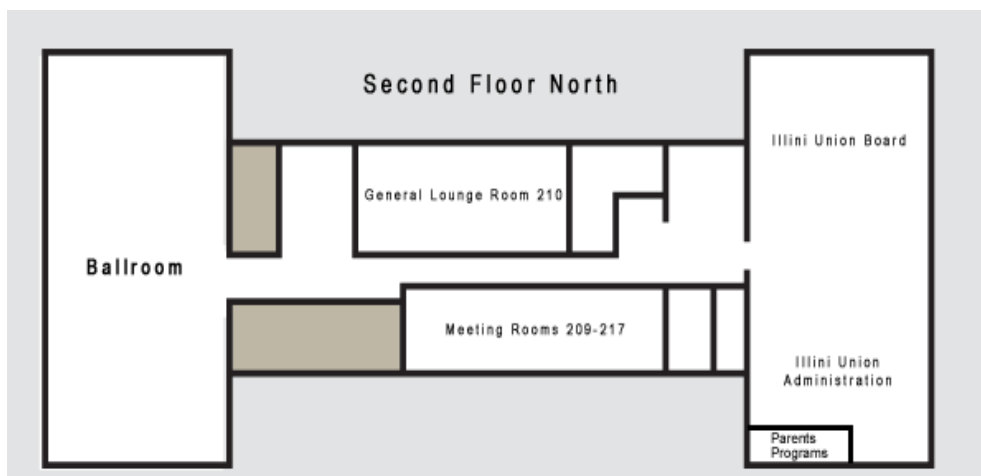


- Choose the "UIpublicWiFi" wireless network
- Open a web browser and go to a web site
- Fill out registration form. The University is legally required to collect information from you to provide you with network access.
- When you open a web browser and enter a web site such as www.illinois.edu (external link), your web browser will be redirected to the UI Public Wireless authentication site, where you are asked to agree to the Terms of Use.
- UI Public Wireless users can contact wireless-related technical support at 217-333-9100.

Illini Union Main Floor

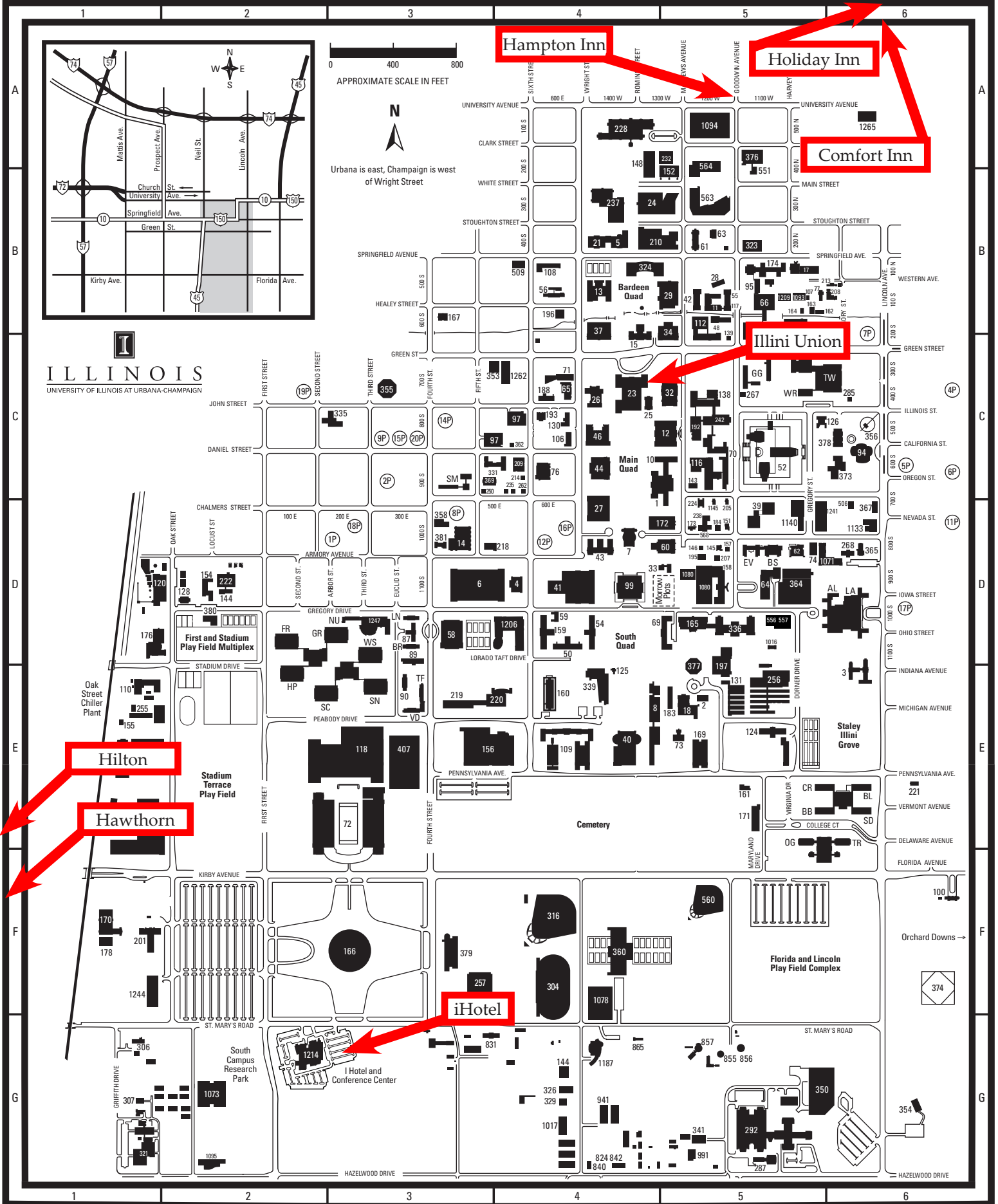


Illini Union Second Floor



Ballroom - Please take north elevator or staircase to 2nd floor.
 Room 210 - Please take north elevator or staircase to 2nd floor.

University of Illinois - Campus Map



ILLINOIS
UNIVERSITY OF ILLINOIS AT URBANA-CHAMPAIGN

Hampton Inn

Holiday Inn

Comfort Inn

Illini Union

Hilton

Hawthorn

iHotel

Call for Papers

Abstracts Due: November 30, 2013

Symposium Date: August 3 to 8, 2014

2014 Global Level Crossing Safety and Trespass Prevention Symposium

University of Illinois at Urbana-Champaign



**Achieving the “Three E’s” of
Engineering, Education & Enforcement
then Moving Beyond to**

Evaluation, Encouragement & Emergency Response

The Global Level Crossing and Trespass Symposium (GLXS) is a biennial event that brings together engineering, safety and security professionals from highway, rail, law enforcement and regulatory authorities around the world. The symposium provides an opportunity to exchange information and share best practices to improve the safety of the at-grade interface between highway and rail systems.

Sponsors



Illinois Department of Transportation



**OPERATION
LIFESAVER®**
Look, Listen & Live

If you are interested in having an Exhibit Booth at GLXS 2014 or would like to be part of the Financial Support Team please email:

glxs2014@outlook.com

For more information on the symposium go to:

<http://go.illinois.edu/GLXS2014>

2014

International Crosstie and Fastening System Symposium

Rail Transportation and Engineering Center (RailTEC)

University of Illinois at Urbana-Champaign, Newmark Lab, Urbana, IL 61801

3 – 5 June 2014

This three day conference will have presentations, discussions, and a technical tour that focus on the state of the art in timber, concrete, steel and composite crosstie and fastening system design, performance, research, modeling, and inspection.



photo by: C. Tyler Dick

Technical and Research Topics

- State of Practice
- Loading Environment
- Laboratory and Field Testing
- Component and System Modeling
- Design Methodologies
- Innovations In Ties And Fastening Systems
- Research Needs
- Failure Modes
- Automated Inspection of Crossties and Fastening Systems

Technical Tour Information

voestalpine Nortrak Inc. - Visit foundry for Special Trackwork and Fastening System Component Manufacture

UIUC - Visit New Full-Scale Rail Infrastructure Laboratory and Timber Crosstie Accelerated Testing Laboratory

Railway Tie Association (RTA) Annual Field Trip

The RTA Annual Field Trip for 2014 will be held in conjunction with this event on 1 and 2 June (agenda available by end of 2013). Tentatively the trip will begin in the Chicago area and end with a morning tour of UIUC facilities and an afternoon half-day technical session June 3. More details at www.rta.org soon.

Sponsorship Information

\$2000 (includes logo in final program, logo prominently displayed around event, special recognition at keynote events and via PPT slides between sessions, one complementary registration) <http://ict.uiuc.edu/railroad/Crosstie/2014/crossties.php>

Registration Information

Full registration: \$400 (includes technical tours, most meals, and downloadable conference files).

Registration will open on 1 November 2013 and will be found at:

<http://ict.uiuc.edu/railroad/Crosstie/2014/crossties.php>

Hotels

Hotel blocks will be available at: Illini Union, Hampton Inn, I Hotel, and Hawthorn Suites by Wyndham

Hosted by:



For more information please contact
Angie Stanford at astanfrd@illinois.edu

Exhibitors

Accutest Laboratories	EA Engineering, Science, and Technology, Inc.	HDR Engineering, Inc.
AECOM	EMR, Inc.	Hulcher Services, Inc.
Aestus LLC.	Envirocon, Inc.	ICF International
AMEC Earth & Environmental, Inc.	Environ International Corporation	JRW Bioremediation
ARCADIS US, Inc.	Environmental Restoration LLC	Marion Environmental, Inc
BELFOR Environmental	Environmental Works	Oil Skimmers, Inc.
Boart Longyear Company	EnviroScience, Inc.	Pace Analytical Services
Cardno	Eurofins Lancaster Laboratories	Pinnacle Engineering, Inc.
CB&I	FMC Environmental Solutions	Polystar, Inc
CTEH	Gannett Fleming, Inc.	Summit Environmental Services, Inc.
Century Group, Inc.	GEI Consultants, Inc.	SUNPRO
CH2M Hill	Geo-Cleanse International, Inc.	SWS Environmental Services
Clean Harbors Environmental Services	Geosyntec Consultants	TestAmerica Laboratories
Coleman Industrial Construction Inc.	Golder Associates	URS Corporation
Conestoga-Rovers & Associates	Hatch Mott MacDonald	Waste Management

Planning Committee

Riaz Ahmed – TRC	Lance Meister – Cross Spectrum
Chris Barkan – University of Illinois	Gregg Menniti – Geosyntec
Betsy Beauchamp – TestAmerica	Glenn Millner – CTEH
Grete Bridgewater - CP	Ryan Mills – BNSF Railway
Chuck Cline – Cardno	Mark Murphy – Conestoga Rovers
Spencer Cronin - EMR	Chris Oakes – Norfolk Southern
Sam Farnsworth – AMEC	Geoff Reeder – Union Pacific
Robert Fronczak – Association of American Railroads	Ken Richardson – ARCADIS
Joe Gennette – NS	Ken Rose – OmniTRAX
Melissa Godlewski – Kennedy Jenks	Gary Rozmus – GEI Consultants, Inc.
Suzan Gonder – Environmental Works	Richard Russell – Norfolk Southern
Stella Karnis – Canadian National	Martina Schlauch Jones – ARCADIS
Scott Keating – GEI Consultants, Inc.	Kim Schlichting – University of Illinois
Kevin Keller – HDR	Lanny Schmid – Union Pacific Railroad
Joanne Maxwell – Amtrak	Oscar Sorensen – CH2M Hill
Russ McDaniel – Norfolk Southern	Leo Thorbecke – AECOM
Steve McNaughton – Union Pacific	John Williams – Pace Analytical

Conference Organizing Team

Nizam Ahmed	LB Frye	Kim Schlichting
Chris Barkan	Tim Gress	Kaila Simpson
Jerri Lyn Beck	Nicole Ladehoff	Angela Stanford
Nick Buege	Ryan Lippman	Kelcey Willmot
Rachel Cote	Tom Roadcap	

Useful Contact Information

RREC 2013 Registration Desk	217-300-8544	iHotel	217-819-5000
Hampton Inn	217-337-1100	Illini Union Guest Rooms	217-333-3030
Hawthorn Suites	217-398-3400	Yellow Cab	217-355-3553
Hilton Garden Inn	217-352-9970	U of I Golf Courses	217-359-5613
Holiday Inn	217-328-7900	Stone Creek Golf Club	217-384-6690

